



AGENDA
ROADS SAFETY COMMITTEE (RSC)
August 8, 2022 - 1:00 PM

This meeting may be attended in person or electronically.

To connect by phone, please dial any of the following numbers and use the meeting ID provided below.

+1 647 374 4685 Canada

+1 647 558 0588 Canada

To connect to video follow the link below and use the meeting ID provided below.

<https://us02web.zoom.us/j/84829988171>

Meeting ID: 848 2998 8171

1. CALL TO ORDER

2. APPROVAL OF THE AGENDA

Recommendation: THAT the agenda be approved.

3. APPROVAL OF PAST MINUTES

Recommendation: THAT the Minutes of May 16, 2022 be approved.

4. DISCUSSION ARISING OUT OF THE MINUTES

5. DISCLOSURE OF PECUNIARY INTEREST

6. PUBLIC WORKS

6.1 Safety Items, Programs and Projects

- a) Wildlife Collision Quiz
- b) Cycling and Pedestrian Safety
- c) Traffic Dampening

7. INFORMATION ITEMS

7.1 Children's Education Poster

7.2 OPP 2nd QTR Report

8. ITEMS FOR FUTURE MEETINGS

9. ADJOURNMENT

Recommendation: THAT the meeting be adjourned at _____ to meet again at the call of the Chair.



ROADS SAFETY COMMITTEE MINUTES (RSC)

May 16, 2022 – 1:00 pm / Zoom

Present: Brian Whitney - Chair
Cheryl Russel – Vice-Chair
Yvonne Graf
John Willmetts – Director of Public Works
Roseann Knechtel – Secretary

Absent: Ken Cufaro

1. Call to Order

The meeting was called to order at 1:01 pm.

2. Approval of the Agenda

Moved by Whitney Seconded by Russel

THAT the agenda be approved as amended to include item 6.4 Committee Mandate.

CARRIED.

3. Approval of Past Minutes

Moved by Russel Seconded by Whitney

THAT the minutes of the February 14, 2022 meeting be approved.

CARRIED.

4. Discussion Arising Out of the Minutes - NONE

5. Declaration of Pecuniary Interest

Chair Whitney stated that if any member had a disclosure of pecuniary interest that they could declare now or at any time of the meeting.

6. Public Works

The Director of Public Works, John Willmetts, provided a verbal update on the purchase of traffic dampening signage.

6.1 Recommended Areas for Paid Duty

Committee members advised there are no further areas to be identified at this time.

6.2 Public Awareness and Education

a) Social Media Speeding Complaints

Members discussed the Township's social media presence and the creation of a Road Safety Education Package for distribution at the Primrose Elementary School.

Direction was given to the Secretary to develop an education package for distribution in consultation with the OPP.

6.3 Safety Items, Programs and Projects

a) Wildlife Collision

Members discussed the frequency of wildlife collisions in Mulmur. Members reviewed draft questions and information for inclusion in the October Newsletter.

Members are to forward additional questions and answers to the Secretary for consideration at the next meeting.

b) Canada Road Safety Week: May 17-23, 2022

Members reviewed the promotional materials and OPP news release for Canada Road Safety Week. Members supported education and promotion through the Township's social media channels.

c) Sight Lines Discussion

Member discussed sight lines and the improvements made through the purchase of a Township brusher. Members confirmed a decrease in complaints.

6.4 Committee Mandate

The Secretary advised the Committee of the direction from Council to bring forward information for consideration on the inclusion of Community Safety in addition to the Road Safety mandate. Members were in support of the change and discussed possible mandate items including theft, property crimes, neighbourhood watch, personal safety and community/neighbour relations.

Moved by Russel Seconded by Graf

THAT the Roads Safety Committee support the transition from a Roads Safety Committee to a Community Safety Committee;

AND THAT the Committee recommend Council defer amending the Roads Safety Committee Terms of Reference until the new term of Council.

CARRIED.

7. Information Items

7.1 Council Motion: Traffic Dampening Signage

7.2 OPP 1st Quarter Report

7.3 Traffic Monitoring Results: County Road 21

Members discussed statistics from the 1st Quarter OPP Report and Traffic Monitoring results. Members agreed locals were the worst offenders and that all residents need to be invested in addressing speed within the Township.

8. Items for Future Meetings

8.1 Children's Education Package

8.2 Cyclist and Pedestrian Safety

8.3 October Wildlife Collision Quiz

9. Adjournment

Moved by Russel Seconded by Graf

THAT we do now adjourn at 2:22 PM and agree to meet again on August 8, 2022 at 1:00 PM or at the call of the Chair.

CARRIED.



British Columbia Conservation Foundation
Wildlife Collision Prevention Program
Suite 200 1383 McGill Road
Kamloops, B.C V2C 6K7
Phone: 250.828.2551 Fax: 250.828.2597
Web: www.wildlifecollisions.ca
Email: wcpp@bccf.com



Frequently Asked Questions about Wildlife Vehicle Collisions

What can drivers do to reduce the chances of having a wildlife vehicle collision?

Watch for the signs - A Wildlife Warning Sign is a yellow diamond shaped sign with an animal symbol in it. The sign warns of a hazard ahead, and advises drivers to be cautious. The sign does not require speed reduction, unless there is an adjacent speed limit sign. Drivers must obey wildlife warning signs and any associated speed changes. Drivers must not disregard the signs just because they have been seen before.

Reduce speed - Speed is a common factor in collisions. Speed reduces a driver's ability to steer away from a hazard. Some studies suggest that wildlife-vehicle collisions occur more than expected on clear, dry nights, and on long straight stretches, as drivers tend to increase speed under good conditions. Drivers may be more cautious on curves or in poor weather.

Drive defensively - Drivers and passengers should actively watch for wildlife, movement, or shining eyes on and beside the road. Drivers should be cautious between dusk and dawn. Light levels are low, and animals are active. Animals approaching from the right side seem to be avoided more successfully than animals approaching from the left, as headlights illuminate that portion of the road better, and drivers pay close attention to the right hand side of the road and ditch - so pay equal attention to both sides of the road.

NOTE: Moose are difficult to see at night because their fur is very dark, and they are so tall that their eyes are normally above most headlight beams, and therefore their eyes may not reflect the headlights.

Use your vehicle - Drivers should keep headlights, signal lights, tail lights and windshields clean, and wear a seatbelt at all times. Drivers can honk horns or flash lights to scare animals off the road. In a 3-lane situation, where possible, drive in the middle lane to provide more distance from the ditch. At night, use the high beams of the vehicle in front to extend the effective sight distance.

What should drivers do if they encounter wildlife on the road? Slow down - collision avoidance and driver response time are improved at slower speeds. Anticipate unpredictable behaviour from all wildlife. Some animals travel together so where there is one animal, there may be more. Watch for mother/offspring pairs.

What should drivers do if a crash is inevitable? - Sometimes, there is no real choice except to strike the animal. If this is the case, look where you want to go, not at the animal. The vehicle tends to go where you look. Brake firmly and quickly, then look, and steer your vehicle to strike the animal at an angle. Let up on the brake just before you hit the animal. This causes the front end of your vehicle to rise and reduces the chances of the animal coming through your windshield.

What should drivers do if an animal is hit, or if there is a dead animal beside the road? This depends on road and traffic conditions, and the condition of the driver. Pull off the road. Turn on hazard lights. Stay away from wounded animals, as they can be very dangerous. You are not required to put an injured animal out of its misery or move a dead animal. Inspect your vehicle to see if it safe to continue driving. Call the RCMP if there is damage over \$1000 or any human injuries. Call the Conservation Officer Service if there is a dead or injured animal to report. In BC, call 1.877.952.7277. In AB, call 1.800 642.3800. In a National Park, contact the Park Wardens. Reporting the exact location of collisions helps wardens monitor injured animals and recover dead ones. Quick removal prevents other animals from being attracted to the highway. Report vehicle damage to your insurance company.

For more information, or to make a tax deductible donation, go to www.wildlifecollisions.ca



British Columbia Conservation Foundation
Wildlife-Vehicle Collision Prevention Program
Suite 200 1383 McGill Road
Kamloops, B.C. V2C 6K7
Phone: 250.828.2551 Fax: 250.828.2597
Web: www.wildlifecollisions.ca
Email: wcpp@bccf.com



Steer clear - to swerve or not to swerve? - If smaller animals such as deer are in your way - think carefully, and consider using your brakes, not your wheel. Do not take unsafe evasive actions. Serious collisions can occur when drivers lose control of their vehicles trying to avoid an animal.

Where do collisions with wildlife most often occur? - Studies indicate that there are some common characteristics of high-risk locations. These include areas of good roadside habitat with water nearby; where creeks intersect roads; and long, wide, straight stretches of road. One assumption is that on good road conditions (long, wide and straight) motorists tend to feel safer and more confident, and therefore accelerate.

Can collisions occur in the city? - The risk of having a collision is not restricted to rural roads or highways. Wildlife is present in urban settings. Roads that connect outlying sections of a city with more populated downtown areas are high risk.

When are collisions with wildlife most common? - Collisions can occur anytime, but there are peak times when they are most likely. 40% of collisions occur between 7:00 pm and midnight. 80% of all wildlife collisions involve deer and the high-risk time times are May and November. Spring is particularly high-risk as new green forage in roadside ditches attracts animals. Bear collisions peak in September and October as bears forage closer to communities. December and January are the high-risk times for moose collisions.

What do drivers need to know about wildlife behaviour in order to anticipate hazards? - Animal behaviour is related to the "fight-or-flight response". There is a certain amount of space in which an animal feels safe; but once that boundary is violated, the animal's reaction is unpredictable. Even if an animal sees you, it may still jump in front of your vehicle. Some animals travel together, for example deer, bighorn sheep, and mother/offspring pairs. If one animal crosses the road, others may follow. If an animal has crossed the road, it may turn and cross again. Animals standing calmly at the side of the road may bolt unexpectedly.

Is wildlife is attracted to the road? - People think of the road as a dangerous place, but wildlife may actually be attracted to the road and right of way. Roadside forage and application of road salt attracts wildlife. In the winter, ploughed roads offer easier movement. In the summer, increased wind provides relief from biting insects.

Why do deer swerve in front of the vehicle? - In an attempt to avoid predators, deer run in a twisting or dodging motion. That is why deer may make a sudden swerve right in front of a vehicle - that is how they are "programmed" to respond to a threat.

Are deer whistles effective? - Many people are convinced that the deer whistles installed in their vehicles are effective at scaring wildlife off the road, however, independent scientific research disagrees. There are two types of deer whistles - air driven and battery operated. Air driven whistles emit sound at frequencies that deer cannot hear, and the noise is not loud enough to be heard over traffic noise. Battery operated whistles have not been independently tested.

Are reflectors effective? - Reflectors are prisms mounted on posts along the road side. As headlights strike the reflectors, light is reflected towards the road. This reflected light catches the animal's eye and distracts it from crossing. There are conflicting research results. Wildlife habituation to the light, the most effective colour, and daytime effectiveness all require further study.

Does fencing work? - With proper maintenance, fences can virtually eliminate collisions. However, there are strong biological arguments against extensive fencing. Traditional wildlife movement corridors are interrupted and wildlife habitat is fragmented. Fencing is also an expensive method of collision mitigation.

For more information, or to make a tax deductible donation, go to www.wildlifecollisions.ca

WILDLIFE COLLISION INFORMATION

From the majestic moose to the swift Canadian loon, from the busy beaver to the magnificent beluga whale, Canada is home to exceptional flora and fauna.

But as our cities get bigger and our highways expand, we've been encroaching on our wildlife's natural habitat – and that means wildlife finds its way into our cities and streets, which can prove dangerous to both human and animal.

Autumn is peak season for vehicle collisions with wildlife: here's what you need to know to help keep our roads safer for you and your loved ones – and our Canadian wildlife.

Fast Facts

According to the [Ontario Road Safety Annual Report](#), the number of animals struck on Ontario roads has increased by 47 per cent from 1999 to 2014 – that's 8,964 animals in 1999, with that number increasing to 13,152 in 2014. This also resulted in two human fatalities and 410 injuries. According to another study, that number becomes even more staggering, with approximately 14,000 wildlife-vehicle collisions happening in a year in Ontario.

Did you know that...

- The vast majority (**89%**) of wildlife-vehicle collisions occur on **rural, two-lane** roads.
- There is a wildlife-motor vehicle collision approximately every **38 minutes**.
- Out of every **17** motor vehicle collisions, **one** will involve a wild animal.
- Each year, wildlife-car collisions cost about **\$800 million** in Canada.

Where do they occur?

By analyzing the areas where wildlife-vehicle collisions typically occur, experts have been able to narrow down a few common factors. The majority of wild animal-motor vehicle collisions occur on stretches of road where:

- There is an abundance of good habitat and forage near the roadside.
- There is a nearby water source.
- There is an intersection of drainages and creeks with roads.
- There are straight, long, and wide stretches of road.

When do they occur?

Since wild animals are active 24 hours a day, wildlife-vehicle collisions can happen anytime, year-round. However, there are a few peak times when collisions tend to occur more frequently:

- The peak time of day for wild animal-vehicle collisions is between **7 p.m.** and **midnight**.
- Studies show that collisions are highest during **dusk** and **dawn** hours, when light levels are lower and animals are more active.
- Collisions spike in **autumn** months, specifically from **October** through **January** – mating season for moose and deer.
- Collisions also spike during spring, in **May** and **June**.

How you can reduce your risk

Although there's no way of predicting when a wild animal may find its way onto a busy street or highway, there are a few measures that we, as motorists, can take in order to reduce our risk of being involved in a collision:

1. Understand animal behaviour

When faced with danger, wild animals have a “fight-or-flight response,” and may react unpredictably when they feel unsafe. An animal may jump in front of your vehicle, even if they see you approaching. Even an animal sitting at the side of the road may unexpectedly bolt. What's more, some animals travel in groups – such as deer and bears, or mothers and offspring – which means that if one of them crosses the road, the others may follow. Understanding animal behaviour can help us anticipate dangers behind the wheel, so we can react accordingly, and safely.

2. Watch the signs

As always, pay attention to the road signs around you. In particular, watch for Wildlife Warning Signs, which are yellow diamond-shaped signs which, in Ontario, typically have an image of a deer on them. These signs are a reminder to remain alert and cautious and to keep an eye out for wandering wildlife.

3. Slow down!

As is the case with many on-road situations, the one thing that motorists can do to reduce their risk in being involved in a collision with wildlife is to simply slow down.

Speeding decreases your ability to react appropriately behind the wheel, and steer away from an unexpected object in the road in front of you, and makes it much more difficult to come to an abrupt full stop. In the unfortunate event of a collision, speeding also increases the force of impact, raising the risk of severe injury.

Although you might be tempted to speed up when driving on a long, quiet stretch of rural road, the safest thing you can do is take your time and follow the speed limit.

4. Drive defensively

[Defensive driving](#) is your best bet for staying safe behind the wheel, especially when it comes to avoiding wildlife-motor vehicle collisions. Defensive driving means paying attention to your surroundings, and anticipating the actions of those around you – including any potential wildlife.

Watch for wildlife on the road, on the shoulder, and along the sides of the road. If you see shining eyes, it may be an animal, as your headlights are reflecting off of the animal's eyes.

What to do if it happens to you

If a crash with wildlife is inevitable, you should aim for the spot where the animal is coming from rather than where it is going. Keep your eyes on where you want your vehicle to go, not on the animal. Break quickly and firmly.

The first thing you should do after a collision with wildlife is pull off the road and turn on your hazard lights. If you feel comfortable, you can carefully approach the animal – if it is injured, stay away, as an injured animal can be very dangerous. If the animal has been fatally hit, you may remove it from the road if you feel comfortable doing so and are able to.

Before getting back behind the wheel, inspect your vehicle to make sure it is safe to drive. If there has been any human injuries, or damage over \$1,000, call 911 or your local police. It's a good idea to report the location of your collision even if your car hasn't been damaged, as this helps officials monitor any injured animals or recover animals that have been fatally hit.

While we can't predict when a wild animal may unexpectedly run onto a busy street, by following the above safety tips, we can work together to help keep our roads safer for all our country's inhabitants – both human and animal.



How to Walk Safely on Rural Roads

Jun 17, 2021 | Pedestrian Safety



Rural living often means lots of driving but it also means lack of sidewalks, which means pedestrians are on the road a lot too. Unfortunately, walking along rural roads can be dangerous. Cars are moving at faster speeds, drivers aren't always watching for people on foot, and there is no dedicated space for walkers. Injuries can be more intense, as well – all the more reason to take the necessary precautions to walk safely on rural roads.

Here are 5 things rural pedestrians can do to stay safe on country roads.

Walk facing traffic

Most rural roads don't have a sidewalk or dedicated space for walkers. In this case, walk facing traffic so you can see any vehicles that pass close to you coming from a distance. Keep well to the shoulder and let any bicycles travelling with the flow of traffic move around you into the laneway, while you keep well to the side of the road.

If you're travelling with a group, walk single file so everyone can keep to the side, and always face forward so you are prepared to react to oncoming traffic.

Keep yourself visible

Even in daylight, pedestrians can be hard to spot, especially on rural roads where they are rare and unexpected. Make sure you catch the attention of any drivers by wearing bright clothing at all times.

At night, use reflective strips, LED lights, and flashlights to make sure you are extra visible to cars and trucks; if necessary, pause and move farther to the side of the road at night while vehicles are passing.

Don't use headphones

Walking on country roads can be a lovely leisurely activity, and that often means you'd like to listen to music or talk to friends on your phone. But blocking your ability to listen for oncoming traffic means you may be slow to react to dangerous situations as they arise. And **concentrating on another activity means you may lose focus** on the roadway and not be in active defensive mode should you need to take action to protect yourself.

Being a rural pedestrian requires extra attention due to the more challenging conditions and the higher risk of injury should an accident occur. So keep your headphones in your pocket.

Watch out for bad weather

Here in Canada, we see a lot of snow and ice, and rural roadways get the worst of it. They are often slow to be cleared properly, resulting in slippery patches left behind on the roadway, and piles of snow at the side of the pavement means pedestrians need to move even farther into the

main roadway when walking. At other times of the year, rain can reduce visibility for drivers and create slick conditions.

For optimal safety, it's best to avoid walking on rural roads in bad weather conditions. But if you must walk along a country road, make sure you are wearing solid footwear with thick treads or ice picks to ensure you are steady on your feet and ready to react. Keep a careful eye on all oncoming cars for potential skids and use reflective clothing and lighting to stay visible. And definitely keep an eye out for snowplows; if possible, veer off the road into a side driveway or path to avoid them as they approach.

Take extra care at hidden intersections

Rural roads always have many hidden intersections. Driveways and laneways can open onto the main road with low visibility and unclear traffic merge points.

As a pedestrian, use extra caution whenever you are crossing a driveway, laneway, or side road intersection. Come to a complete stop and look carefully for merging cars, trucks, or farm equipment before proceeding. If possible, make eye contact with any approaching drivers to be extra sure they will stop and allow you time to cross.

Country walks can be fun, refreshing, and beautiful. Make sure you use these few simple precautions to make your journey as positive and safe as possible.

Earn your Road SMARTS

Learning to walk safely on rural roads is one action you can take to become a safer road user. If you would like to get more involved in road safety, we invite you to take the #RoadSMARTS pledge. By taking the Road SMARTS Pledge, you Support Making All Road Travel Safe, which can help improve road safety for everyone. When road behaviours change, accidents can be reduced. For more information and to take the pledge for free, visit

<https://www.ottawasafetycouncil.ca/road-smarts>.

Categories

- Booster Fit
- Crossing Guards
- Cycle Safety
- Media Releases
- Motorcycle Safety
- Pedestrian Safety

- Road Safety
- School Zone Safety
- Uncategorized
- Walking School Bus



Crossing Guards – Our Community Superheroes!

Aug 2, 2022 | Crossing Guards, School Zone Safety

[read more](#)

elcome to your WALKALONE PROGRAM WORKBOOK

Before you start, please read the information on the back of this workbook.

Table of Contents

My walk!	1	My People Around Me	11
Are you Ready? Walk Alone?	2	Street Use	12
Walkway Rules	3	Safe Area Use	13
Walking Alone with a Backpack	4	Sticky Sit	14
Walking Alone with a Backpack	5	Stuck in a Car	15
Walking Alone with a Backpack	6	Walking Alone with a Backpack	16
Walking Alone with a Backpack	7	Walking Alone with a Backpack	17
Walking Alone with a Backpack	8	Walking Alone with a Backpack	18
Walking Alone with a Backpack	9	Walking Alone with a Backpack	19
Walking Alone with a Backpack	10	Walking Alone with a Backpack	20



WalkALONE



OSC WalkAlone: When, What, and How for Kids

Jul 27, 2022 | Pedestrian Safety, Road Safety

[read more](#)



5 Summer Road Safety Activities for Kids

Jul 4, 2022 | Cycle Safety, Pedestrian Safety, Road Safety

[read more](#)



Programs

Motorcycle Training Courses

CycleSafe

WalkSafe

Crossing Guard Program

Walking School Bus

Company

[About the Ottawa Safety Council](#)

[Blog](#)

[Employment Opportunities](#)

[Contact](#)

[OSC Privacy Policy](#)

[Annual Reports and By-laws](#)

Contact

301 Moodie Drive, Suite 103

Ottawa, ON

K2H 9C4

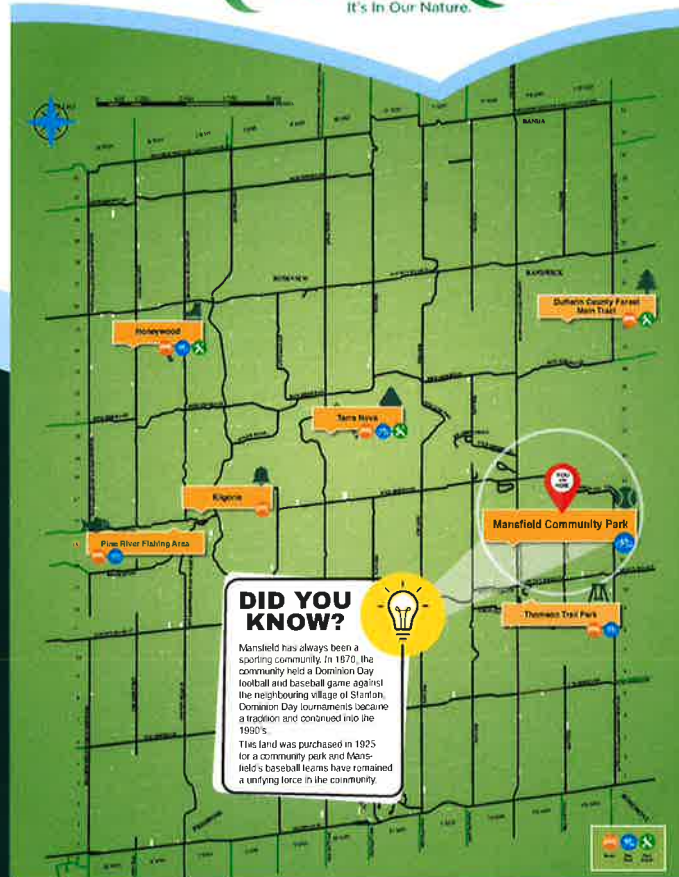
(613) 238-1513

info@ottawasafetycouncil.ca



BICYCLES

BICYCLES



DID YOU KNOW?

Mansfield has always been a sporting community. In 1870, the community held a Dominion Day football and baseball game against the neighbouring village of Stantah. Dominion Day tournaments became a tradition and continued into the 1950's. This land was purchased in 1925 for a community park and Mansfield's baseball teams have remained a unifying force in the community.

- WELCOME TO - MANSFIELD COMMUNITY PARK

TRAIL ETIQUETTE



Share the road



Show courtesy to all trail users



Stay on the trail



Stay to the right, pass on the left



Pedestrians have right of way



Do not litter

ENJOY
YOUR RIDE!



mulmur.ca



BICYCLISTS:

How to share the road safely

1. Stop at all stop signs.
2. When riding 2 abreast please leave the left half of the lane clear to allow drivers to see the road ahead for safer passing.
3. Group riders should ride in tight predictable and small formations that make it easier for vehicles to pass.
4. Wear highly visible clothing and/or strong lights to be seen early.



MOTORISTS:

How to pass cyclists

1. Pass only when the oncoming lane is clear.
2. Be patient, 2 abreast cycling is legal.
3. The law requires a minimum of 1 m space between a cyclist and the car when passing therefore all passes require a lane change. Never pass a cyclist within the same lane.
4. Bicyclists have the same rights to use the road as cars.

5 Tips For Rural Road Cycling

ROAD CYCLING IS DIFFERENT WHEN OUT IN THE COUNTRY, AND LIKE CITY RIDING, IT HAS ITS OWN SET OF RULES TO FOLLOW

BY NEIL BEZDEK

May 9, 2016



TimothyJ via Flickr

A unique feature of the southwestern United States is the scale of the terrain. At times the scenery's energizing—when I'm feeling fresh, the landscape and pavement stretching to the sky are an inspiration to crouch forward and hit the throttle. But as fatigue sets in and autopilot takes over, the flicker of an endless yellow line merely summons daydreams.

Unfortunately, rural settings like these have a similar effect on motorists. Speeds go up and attention spans go down, and so pedaling along country roads warrants a specific set of safety considerations. As I roam the open roads, I keep the following in mind:

Don't expect motorists to see you.

In [city traffic](#), dense streets and attentive drivers mean the key to safety is being assertive and using the rhythm of traffic to your advantage. But as your bicycle carries you away from town, the safer place to be becomes the side of the road. Likewise, plan to dodge cars in intersections even when you have the right-of-way.

Look behind you.

I glance over my shoulder as I approach every driveway, intersection,

and road hazard. Yes, every single one. A common car-on-bike incident is [the right hook](#). This is when a car passes a cyclist, slows to turn right, and obviously crosses the cyclist's path on the edge of the street.

Avoid riding into the sunset.

Each day I gauge the wind and sunlight to select as pleasant a route home as possible. This is about more than enjoyment: Riding into the sun makes you virtually invisible to motorists. If you're stuck heading west at the end of the day, try taking a meandering route. And when the sun's at your back, keep in mind that road users ahead will have a difficult time seeing you.

Watch for oncoming traffic.

Passing motorists often accelerate into the opposite lane without looking for cyclists in their path. Similarly, I shudder to think about how frequently I make fast right turns onto two-lane roads without considering what might be fast approaching on the wrong side. (We also have a few more pointers on [sharing the road](#) that would be good to keep in mind.)

Pause in high-visibility places.

I usually don't stop to change clothes, eat food, or even answer the call of nature (an essential skill for road racing, and [practice makes perfect](#)). But I do wait until I'm a safe distance from blind corners or hillcrests before doing anything that compromises my focus.

This article originally appeared in the "Rambling Man" blog at [Bicycling.com](#).

COTTAGE LIFE: [OUTDOORS](#)

How to ride a bike on rural roads while avoiding a trip to the ER

BY SARA LAUX PUBLISHED: AUGUST 5, 2016 UPDATED: JUNE 9, 2022



Cycling in the country can be a great experience: beautiful vistas, open roads, and oh, the peace and quiet—until a farm truck passes you going 50 clicks over the speed limit and you're left spluttering on the shoulder in its dusty wake...if you're lucky.

It is absolutely possible to have a great biking experience on rural roads, but there are a few things you need to do to keep yourself safe.

Scout your route or do your research

Some country roads are easier to bike than others. Look for paved shoulders, if possible, wide lanes, roads with little traffic and few blind curves. Narrow lanes, no escape routes, and lots of twists might be fun to ride, but the danger factor is upped considerably. Check online for good rural cycling routes if you're not sure where to go.

Remember that you might be an unexpected sight

It's not that country cruisers are more inconsiderate than those in the city (anyone who's been doored by a parked car can tell you that), but a lot of country drivers simply aren't used to seeing or dealing with cyclists. Yes, you have every right to be on the road, but be proactive in protecting yourself as well. Making eye contact and waving, when possible, is also a good idea.

Make yourself as visible as possible

Seriously—go overboard, because to a car travelling at highway speeds, you're pretty much invisible. Wear bright colours, add a flag to the back of your bike, use your lights, even during the day, make sure you have plenty of reflectors, and throw on a fluorescent safety vest if you want to be extra cautious (one with an ANSI II rating should do the trick).

Ride with traffic, further away from the edge of the road than in the city

Riding this way will allow cars to see you more easily, encourages them to go around you with enough space, and gives you somewhere to move without necessarily having to go all the way onto the shoulder. It's important to always make sure you have a space to escape to.

Stay alert—even more than you think you have to

If you ride in the city, you're probably used to staying alert for all sorts of obstacles—and, believe it or not, the country is no different. Keep a regular eye on what's behind you, watch for rough roads, be aware of hidden driveways and access points (remember, people aren't necessarily looking out for cyclists), and watch for animals. If you have to stop, make sure it's in a visible place, and well off the road. And don't wear headphones. Yes, the wind in your ears may not allow you to hear easily, but you'll still be better off if you aren't distracted by Katy Perry.

Gear up

No, not for big hills, although do that too. Make sure your stuff is suited to country roads: fat tires for unpaved roads, panniers rather than a backpack for comfort, a patch kit, bandaids and—do we even need to say this?—a helmet. Leather gloves will help protect your hands both from fatigue and from road rash if you take a tumble. Bring lots of water, and a snack for an impromptu roadside picnic. Oh, and if dealing with animals might be a problem, pack a squirt bottle of water so you can scare them away.

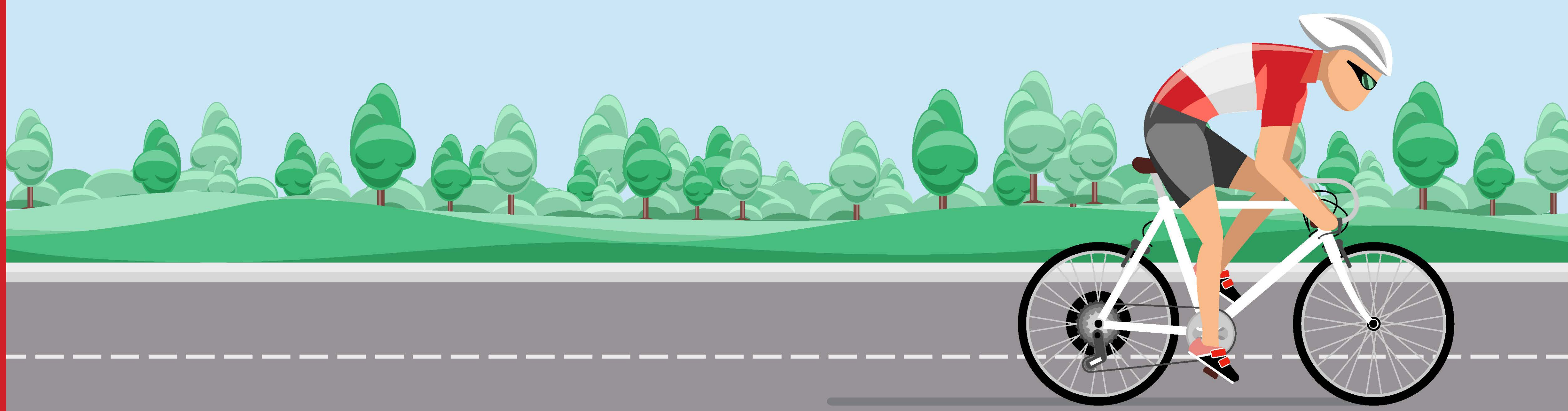
Don't ride into the sunset

Drivers will have a hard time seeing you in the glare, which makes you a sitting duck for an accident. So, whenever possible, avoid riding into the sunset.

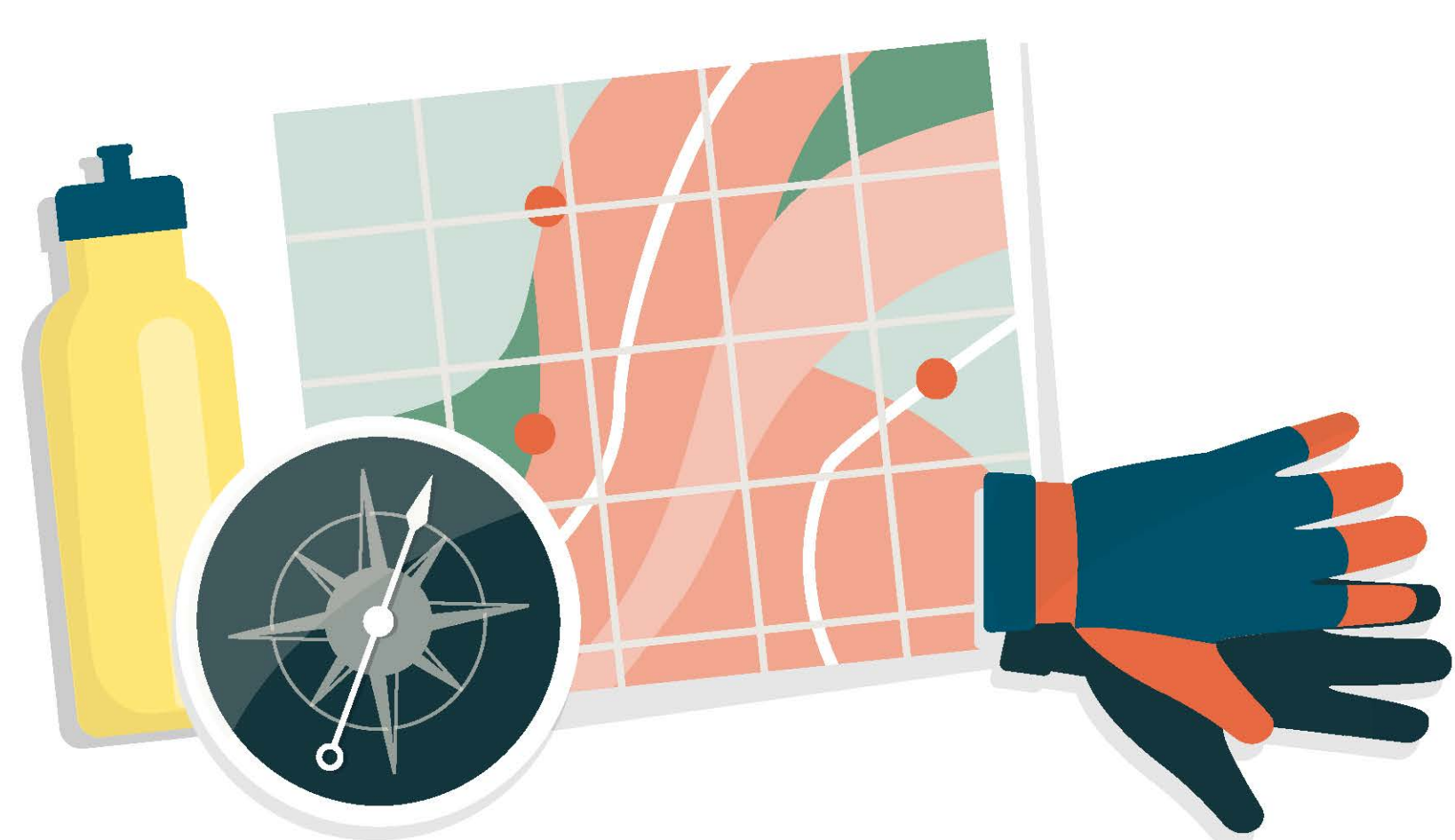
What's your tip for a great country ride?

11 Bike Safety Tips FOR ROAD RIDING

Whether you're commuting to work or headed out for coffee, use these bike safety tips to stay safe on the road.



BEFORE YOU RIDE



1 Choose Your Route Carefully

Opt for routes with bike lanes, pedestrian overpasses and neighborhoods over main roads.

2 Wear Your Helmet

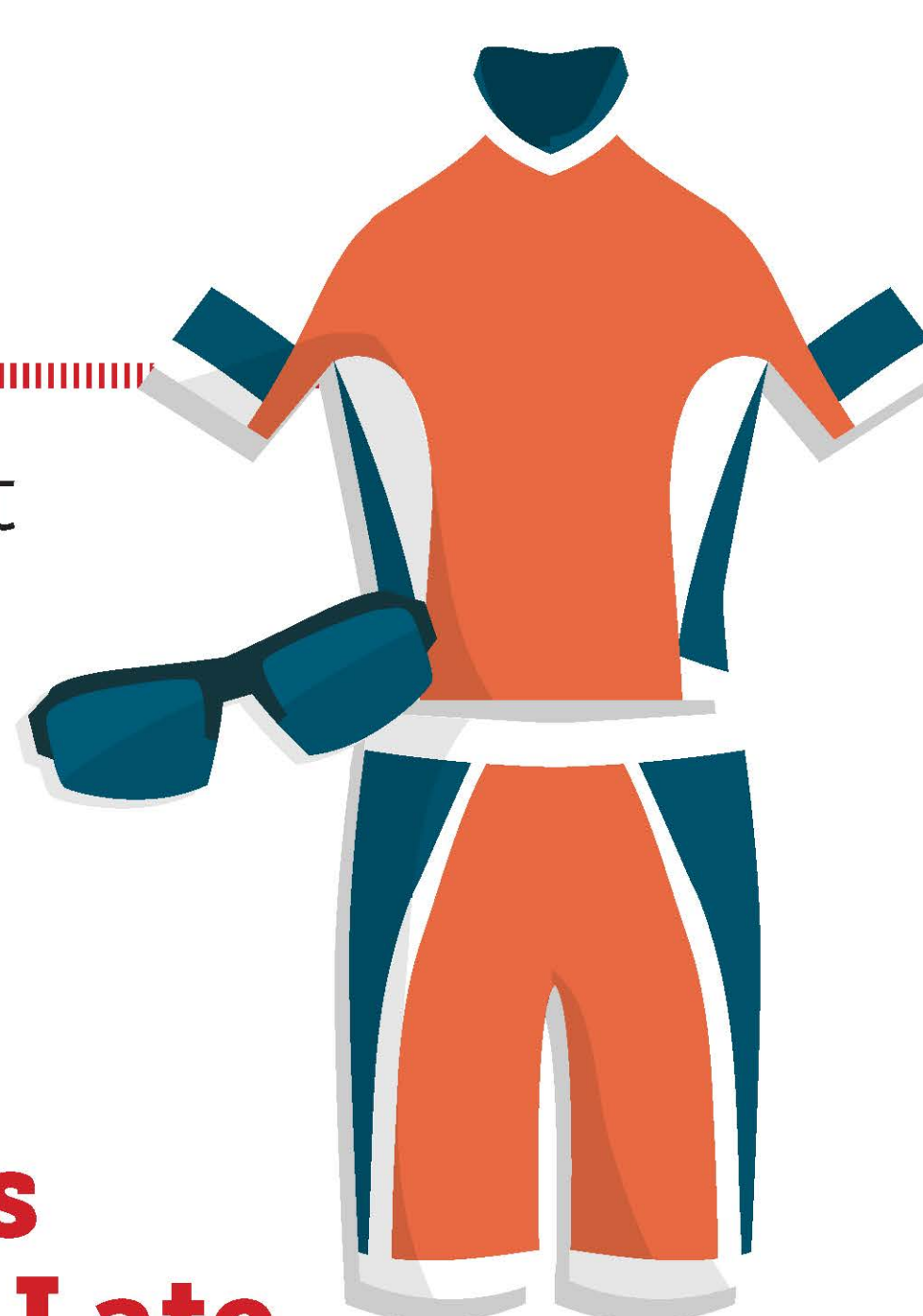
Your bike helmet should be level and stay firmly on your head. If your current helmet has been in a crash, replace it.



3

Dress for the Ride

Wearing bright colors helps motorists see you better.



4

Use Lights Early and Late

Outfit your bike with two blinking LED lights: red for the back, white for the front.

5

Keep Your Bike in Good Shape

Regularly service and maintain your bike, just as you would a car. Always pack an emergency kit in case you get a flat.

ON THE ROAD

1 Don't Ride on the Sidewalk

Staying off sidewalks protects you from vehicles pulling out of garages.

2 Move with Traffic

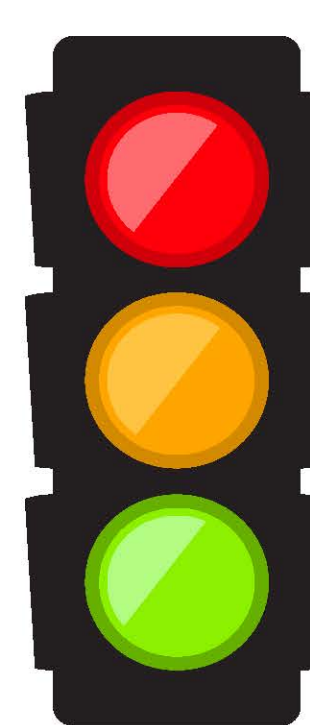
Wrong-way riding puts you at risk for collisions, especially as drivers turn right.

3 Ride on the Right

If you're on a road without a bike lane, ride on the edge, not the shoulder.

4

Obey Traffic Signals



Follow all road rules. Always stop at stop signs, just as you would in a car.

5

Use Hand Signals

Without the benefit of flashers, hand signals alert cars to your next move.

6

Scan the Road

Like drivers, bicyclists should pay attention to the road. Look for potholes, debris, car doors and pedestrians.



4 SIMPLE STEPS FOR BICYCLE SAFETY

EVERY YEAR, THOUSANDS
OF PEOPLE ARE INJURED
AND HUNDREDS ARE **KILLED**
WHILE RIDING BICYCLES.



1



PROTECT YOUR HEAD

Always wear a helmet to
keep your noggin safe.

ACT LIKE A CAR

Drivers are used to
the patterns of other
car drivers and to be
safe, you should not weave
in and out of traffic and stay
predictable like other car drivers.

2



OBEY ALL TRAFFIC LAWS AND LIGHTS

Bicycles must obey
the traffic laws like
all other vehicles
on the road.

3



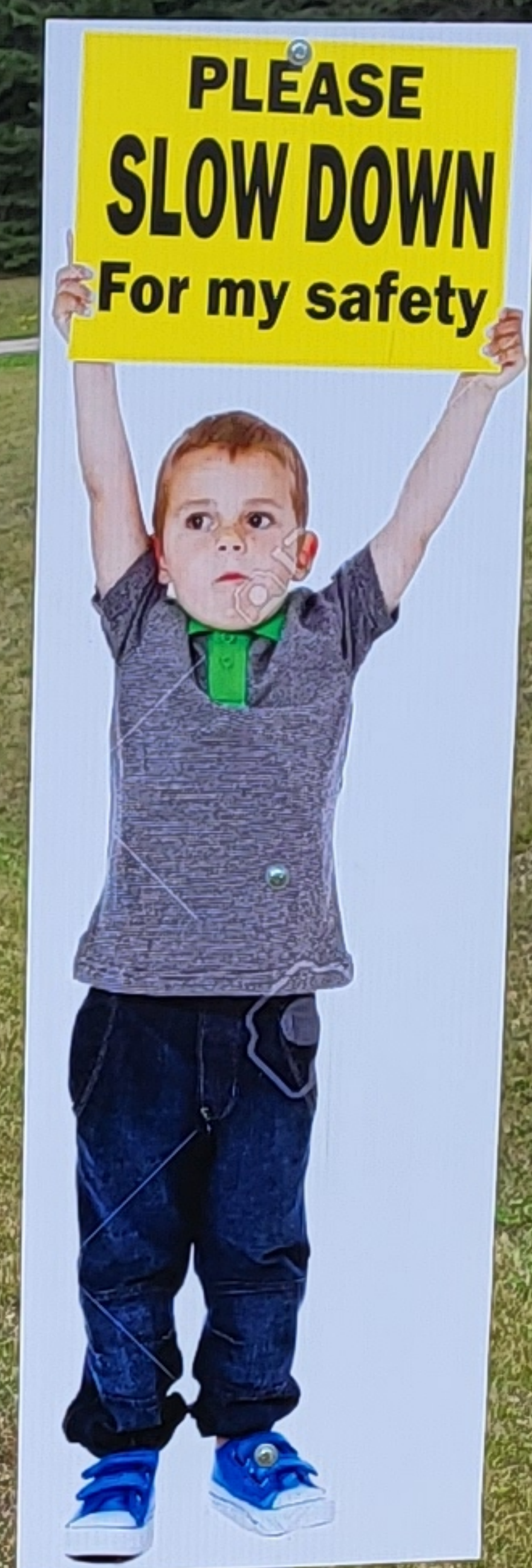
4

USE HAND SIGNALS

When using hand
signals, it alerts
other drivers and
pedestrians on the
road of your intended
movements. Use hand signals
as a way to alert other
drivers, obey the
laws, and for
self-protection.



**YOU ARE GOOD TO GO!
BE SAFE ON THE ROAD**



LET'S BE ROAD SAFE THIS SUMMER!



CROSSING THE ROAD

- Always walk with a buddy or parent
- Look both ways twice!
- Listen for cars and don't wear headphones when crossing
- Walk facing traffic if a sidewalk isn't available



BIKING

- Always wear a helmet
- Check that your bike is working before you ride, especially your breaks!
- Make sure your bike has a light and reflectors if riding at dusk
- Watch closely for cars that are turning and leaving driveways



PLAYING OUTSIDE

- Always watch for cars
- Never run after a toy that rolls into the road. Stop and look both ways before collecting the toy





Dufferin Ontario Provincial Police

Township of Mulmur Police Services Board Report 27 July 2022

Detachment Commander's Report

It is my pleasure to provide this report to the Township of Mulmur Police Services Board. The Detachment Personnel are committed to providing a professional policing service that addresses identified community needs and concerns.

THE PROMISE OF THE OPP

OPP Vision Safe Communities . . . A Secure Ontario.

OPP Mission

To serve our province by protecting its citizens, upholding the law and preserving public safety.

OPP Values

Serving with **PRIDE, PROFESSIONALISM, & HONOUR**

Interacting with **RESPECT, COMPASSION & FAIRNESS**

Leading with **INTEGRITY, HONESTY, & COURAGE**

Always doing the right things for the right reasons.

Police Services Board Report for Mulmur Township
2022/Apr to 2022/Jun

Public Complaints	
Policy	0
Service	0
Conduct	0

Date information collected from Professional Standards Bureau Commander Reports: 2022-07-13

Data Source

Ontario Provincial Police, Professional Standards Bureau Commander Reports

- Includes all public policy, service and conduct complaints submitted to the Office of the Independent Police Review Director (OIPRD)

Secondary Employment

Detachment: 1N - DUFFERIN

Location code(s): 1N00 - DUFFERIN

Area code(s): 1007 - Mulmur (old association)

Report Generated by:

Girdler, Brad

Report Generated on:

13-Jul-22 8:58:08 AM

PP-CSC-Operational Planning-4300



Calls For Service (CFS) Billing Summary Report

Mulmur April to June - 2022

Billing Categories (Billing categories below do not match traditional crime groupings)		2022				2021			
		April to June	Year to Date	Time Standard	Year To Date Weighted Hours	April to June	Year to Date	Time Standard	Year To Date Weighted Hours
Violent Criminal Code	Sexual Assault	1	2	16.1	32.2	0	0		0.0
	Assault-Level 1	1	2	16.1	32.2	1	1	16.1	16.1
	Utter Threats to Person	1	1	16.1	16.1	0	0		0.0
	Total	3	5	16.1	80.5	1	1	16.1	16.1
Property Crime Violations	Break & Enter	3	4	6.5	26.0	0	3	6.5	19.5
	Theft of Motor Vehicle	0	2	6.5	13.0	0	0		0.0
	Theft of - Automobile	0	0		0.0	1	1	6.5	6.5
	Theft of - All Terrain Vehicles	1	1	6.5	6.5	0	0		0.0
	Theft of - Other Motor Vehicles	0	1	6.5	6.5	0	0		0.0
	Theft Under -master code	0	1	6.5	6.5	1	2	6.5	13.0
	Theft under - Other Theft	0	0		0.0	1	2	6.5	13.0
	Theft Under - Gasoline Drive-off	1	1	6.5	6.5	1	2	6.5	13.0
	Theft FROM Motor Vehicle Under \$5,000	2	6	6.5	39.0	0	0		0.0
	Fraud -Money/property/ security > \$5,000	0	0		0.0	0	1	6.5	6.5
	Fraud -Money/property/ security <= \$5,000	1	1	6.5	6.5	0	1	6.5	6.5
	Fraud - Other	0	0		0.0	1	1	6.5	6.5
	Mischief - master code	1	1	6.5	6.5	3	4	6.5	26.0
	Property Damage	1	1	6.5	6.5	0	2	6.5	13.0
	Total	10	19	6.5	123.5	8	19	6.5	123.5
Other Criminal Code Violations (Excluding traffic)	Offensive Weapons-Possession of Weapons	0	0		0.0	1	1	7.7	7.7
	Breach of Firearms regulation -unsafe storage	1	1	7.7	7.7	0	0		0.0
	Bail Violations - Fail To Comply	4	4	7.7	30.8	1	1	7.7	7.7
	Total	5	5	7.7	38.5	2	2	7.7	15.4
Statutes & Acts	Landlord/Tenant	4	4	3.4	13.6	1	1	3.4	3.4
	Mental Health Act	2	4	3.4	13.6	1	1	3.4	3.4
	Mental Health Act - No contact with Police	1	1	3.4	3.4	0	0		0.0
	Mental Health Act - Attempt Suicide	1	1	3.4	3.4	0	0		0.0
	Mental Health Act - Placed on Form	1	4	3.4	13.6	2	3	3.4	10.2
	Mental Health Act - Apprehension	0	1	3.4	3.4	1	1	3.4	3.4
	Trespass To Property Act	3	5	3.4	17.0	6	7	3.4	23.8
	Total	12	20	3.4	68.0	11	13	3.4	44.2



Calls For Service (CFS) Billing Summary Report

Mulmur April to June - 2022

Billing Categories (Billing categories below do not match traditional crime groupings)		2022				2021			
		April to June	Year to Date	Time Standard	Year To Date Weighted Hours	April to June	Year to Date	Time Standard	Year To Date Weighted Hours
Operational	Animal -Master code	0	0		0.0	0	1	3.7	3.7
	Animal Stray	3	4	3.7	14.8	2	5	3.7	18.5
	Animal Injured	1	2	3.7	7.4	1	2	3.7	7.4
	Animal - Other	2	2	3.7	7.4	0	0		0.0
	Animal - Dog Owners Liability Act	1	1	3.7	3.7	1	2	3.7	7.4
	Domestic Disturbance	2	3	3.7	11.1	5	8	3.7	29.6
	Suspicious Person	1	3	3.7	11.1	6	8	3.7	29.6
	Fire - Building	0	4	3.7	14.8	3	4	3.7	14.8
	Fire - Other	1	1	3.7	3.7	0	0		0.0
	Missing Person under 12	0	0		0.0	1	1	3.7	3.7
	Missing Person 12 & older	0	0		0.0	1	1	3.7	3.7
	Missing Person Located 12 & older	0	0		0.0	1	1	3.7	3.7
	Noise Complaint -Master code	5	5	3.7	18.5	7	8	3.7	29.6
	Noise Complaint - Residence	0	1	3.7	3.7	0	0		0.0
	Noise Complaint - Others	4	4	3.7	14.8	1	1	3.7	3.7
	Found Property -Master code	2	2	3.7	7.4	3	4	3.7	14.8
	Found-Household Property	0	0		0.0	0	1	3.7	3.7
	Found-Others	0	0		0.0	1	1	3.7	3.7
	Lost Property -Master code	1	1	3.7	3.7	0	0		0.0
	Sudden Death - Suicide	0	0		0.0	1	1	3.7	3.7
	Sudden Death - Natural Causes	1	1	3.7	3.7	1	4	3.7	14.8
	Suspicious Vehicle	5	7	3.7	25.9	7	11	3.7	40.7
	Trouble with Youth	0	2	3.7	7.4	0	0		0.0
	Medical Assistance -Other	1	1	3.7	3.7	0	0		0.0
	Vehicle Recovered - Trucks	0	1	3.7	3.7	0	0		0.0
	Vehicle Recovered - Constr. Vehicle	0	1	3.7	3.7	0	0		0.0
	Unwanted Persons	2	2	3.7	7.4	0	1	3.7	3.7
	Neighbour Dispute	4	5	3.7	18.5	2	2	3.7	7.4
	By-Law -Master code	0	0		0.0	1	1	3.7	3.7
	Noise By-Law	1	1	3.7	3.7	0	0		0.0
	Firearms (Discharge) By-Law	0	0		0.0	1	2	3.7	7.4
	Other Municipal By-Laws	0	3	3.7	11.1	0	0		0.0
	Traffic By-Law	0	1	3.7	3.7	0	0		0.0



Calls For Service (CFS) Billing Summary Report

Mulmur April to June - 2022

Billing Categories (Billing categories below do not match traditional crime groupings)		2022				2021			
		April to June	Year to Date	Time Standard	Year To Date Weighted Hours	April to June	Year to Date	Time Standard	Year To Date Weighted Hours
Operational	Assist Fire Department	1	1	3.7	3.7	1	1	3.7	3.7
	Assist Public	16	27	3.7	99.9	21	36	3.7	133.2
	Family Dispute	2	5	3.7	18.5	3	5	3.7	18.5
	Total	56	91	3.7	336.7	71	112	3.7	414.4
Operational2	False Holdup Alarm-Accidental Trip	1	1	1.3	1.3	0	1	1.3	1.3
	False Alarm -Others	15	30	1.3	39.0	11	23	1.3	29.9
	Keep the Peace	5	5	1.3	6.5	3	3	1.3	3.9
	911 call / 911 hang up	3	3	1.3	3.9	1	7	1.3	9.1
	911 call - Dropped Cell	2	6	1.3	7.8	3	4	1.3	5.2
	Total	26	45	1.3	58.5	18	38	1.3	49.4
Traffic	MVC (MOTOR VEHICLE COLLISION) -Master code	1	2	3.5	7.0	0	1	3.5	3.5
	MVC - Personal Injury (MOTOR VEHICLE COLLISION)	2	3	3.5	10.5	3	4	3.5	14.0
	MVC - Prop. Dam. Non Reportable	3	11	3.5	38.5	2	11	3.5	38.5
	MVC - Prop. Dam. Reportable (MOTOR VEHICLE COLLISION)	15	41	3.5	143.5	13	32	3.5	112.0
	MVC - Others (MOTOR VEHICLE COLLISION)	0	1	3.5	3.5	0	0		0.0
	Total	21	58	3.5	203.0	18	48	3.5	168.0
Total		133	243		908.7	129	233		831.0

Note to Detachment Commanders:

- The content of each report is to be shared by the Detachment Commander only with the municipality for which it was generated. The municipality may treat this as a public document and distribute it as they wish.
- All data is sourced from the Niche RMS application. Included are 'reported' occurrences (actuals and unfounded occurrences) for 'billable' occurrences ONLY. Data is refreshed on a weekly basis.
- The Traffic category includes motor vehicle collision (MVC) occurrences entered into Niche (UCR code 8521). MVCs are NOT sourced from the eCRS application for this report.
- Only the primary violation is counted within an occurrence.
- Time standards displayed are for the 2021 billing period.

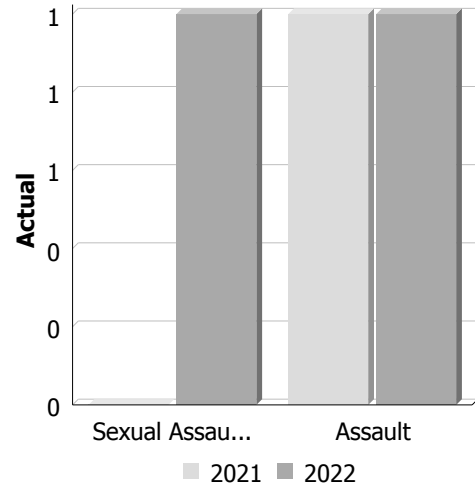
Note to Municipalities:

- Data contained within this report is dynamic in nature and numbers will change over time as the Ontario Provincial Police continues to investigate and solve crime.
- This report is NOT to be used for crime trend analysis as not all occurrences are included.
- Data groupings within this report do not match traditional crime groupings seen in other public reports such as the OPP Police Services Board reports or Statistics Canada reporting.

Police Services Board Report for Mulmur Township
Records Management System
April to June - 2022

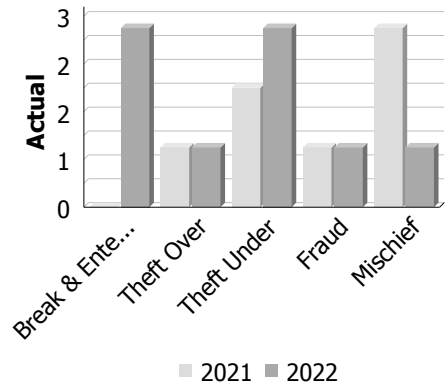
Violent Crime

Actual	April to June			Year to Date - June		
	2021	2022	% Change	2021	2022	% Change
Murder	0	0	--	0	0	--
Other Offences Causing Death	0	0	--	0	0	--
Attempted Murder	0	0	--	0	0	--
Sexual Assault	0	1	--	0	2	--
Assault	1	1	0.0%	1	2	100.0%
Abduction	0	0	--	0	0	--
Robbery	0	0	--	0	0	--
Other Crimes Against a Person	0	0	--	0	0	--
Total	1	2	100.0%	1	4	300.0%



Property Crime

Actual	April to June			Year to Date - June		
	2021	2022	% Change	2021	2022	% Change
Arson	0	0	--	0	0	--
Break & Enter	0	3	--	2	4	100.0%
Theft Over	1	1	0.0%	1	4	300.0%
Theft Under	2	3	50.0%	5	9	80.0%
Have Stolen Goods	0	0	--	0	0	--
Fraud	1	1	0.0%	3	1	-66.7%
Mischief	3	1	-66.7%	4	1	-75.0%
Total	7	9	28.6%	15	19	26.7%



Drug Crime

Actual	April to June			Year to Date - June		
	2021	2022	% Change	2021	2022	% Change
Possession	0	0	--	0	0	--
Trafficking	0	0	--	0	0	--
Importation and Production	0	0	--	0	0	--
Total	0	0	--	0	0	--



Detachment: 1N - DUFFERIN
Location code(s): 1N00 - DUFFERIN
Area code(s): 1007 - Mulmur
Data source date:
 2022/07/09

Report Generated by:
 Girdler, Brad

Report Generated on:
 13-Jul-22 9:04:52 AM
 PP-CSC-Operational Planning-4300

Updated : Monday, June 13, 2022 - Current Period : 1999/12/31

1N00 - DUFFERIN 2022 Q 1 All Offence Hours of Day All Offence Days of Week All Offence Months All Coverage Types CC_Provincial Statutes All Offence Act Part Types All Courts All Badges All License Plate Location All Offender Gender All Offender Age Group All Date Added All Prior Offence Date MEASURES

Offence Count as values		HTA	CC-Traffic (Revised)	CC-Non-Traffic (Revised)	Other	CC_Provincial Statutes
2022/Jan	January	720	16	158	107	1,001
	All Offence Months	720	16	158	107	1,001
2022/Feb	February	753	25	46	99	923
	All Offence Months	753	25	46	99	923
2022/Mar	March	734	8	66	67	875
	All Offence Months	734	8	66	67	875
2022 Q 1		2,207	49	270	273	2,799

Zero suppression rows and columns. Suppression options applied: zero values, division by zero, missing values, overflow values.

Updated : Monday, June 13, 2022 - Current Period : 1999/12/31

[1N - DUFFERIN](#)
[2022 Q 2](#)
[All Offence Hours of Day](#)
[All Offence Days of Week](#)
[All Offence Months](#)
[All Coverage Types](#)
[CC_Provincial Statutes](#)
[All Offence Act Part Types](#)
[All Courts](#)
[All Badges](#)
[All License Plate Location](#)
[All Offender Gender](#)
[All Offender Age Group](#)
[All Date Added](#)
[All Prior Offence Date](#)
[MEASURES](#)

Offence Count as values		HTA	CC-Non-Traffic (Revised)	Other	CC_Provincial Statutes
2022/Apr	April	992	10	118	1,120
	All Offence Months	992	10	118	1,120
2022/May	May	609	1	52	662
	All Offence Months	609	1	52	662
2022 Q 2		1,601	11	170	1,782

Zero suppression rows and columns. Suppression options applied: zero values, division by zero, missing values, overflow values.

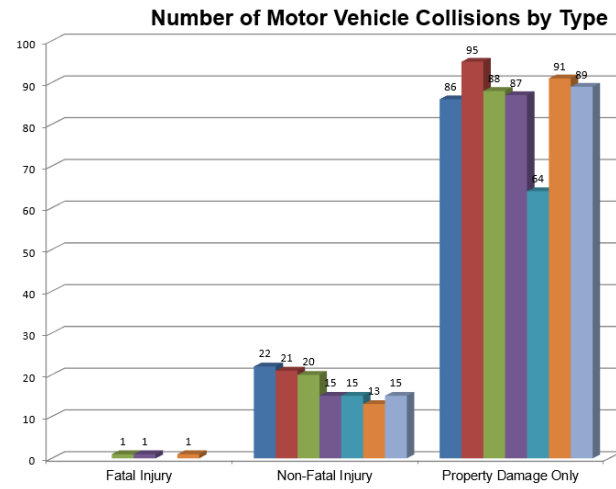
Wednesday, July 13, 2022

Traffic File Control Register

Report Period: 01-APR-2022 thru 30-JUN-2022

Report Criteria --> Detachment Code starting with {1N00} Report Type equals {*} Incident Type equals {*}

S t a t u s	Incident Date	Incident Time	Self- Report ed	Location	Jurisdiction	RdHwy Intersection	Incident Type	Primary Cause	Report Type
C	11-Apr-22	11:53	No	COUNTY ROAD 19	MULMUR TWP	89	Property Damage Only	Speed -- excessive	Motor Vehicle
C	17-Apr-22	10:55	No	COUNTY ROAD 19	MULMUR TWP		Property Damage Only	Animal - Wild or Domestic	Motor Vehicle
C	24-Apr-22	10:30	No	COUNTY ROAD 18	MULMUR TWP	20 SIDEROAD	Property Damage Only	Improper passing	Motor Vehicle
C	03-May-22	0:48	No	89 89	MULMUR TWP	5TH LINE EHS	Property Damage Only	Animal - Wild or Domestic	Motor Vehicle
C	09-May-22	8:00	No	COUNTY ROAD 18	MULMUR TWP	COUNTY ROAD 21	Property Damage Only	Driver fatigue	Motor Vehicle
C	09-May-22	11:00	No	COUNTY ROAD 18	MULMUR TWP	89	Property Damage Only	Inattentive driver	Motor Vehicle
C	14-May-22	19:19	No	RIVER	MULMUR TWP	CENTRE	Property Damage Only	Ability Impaired â€Alcohol	Motor Vehicle
C	21-May-22	14:52	No	89 89	MULMUR TWP	3RD LINE	Non-Fatal Injury	Following too closely	Motor Vehicle
C	21-May-22	20:55	No	89	MULMUR TWP	5TH LINE EHS	Property Damage Only	Animal - Wild or Domestic	Motor Vehicle
C	14-May-22	10:45	No	20 SIDEROAD	MULMUR TWP	CENTRE	Non-Fatal Injury	Debris on roadway	Motor Vehicle
C	30-May-22	16:09	No	89 89	MULMUR TWP	4TH LINE	Property Damage Only	Following too closely	Motor Vehicle
C	06-Jun-22	16:03	No	89 89	MULMUR TWP	4TH LINE	Property Damage Only	Inattentive driver	Motor Vehicle
C	10-Jun-22	21:12	No	COUNTY ROAD 21	MULMUR TWP	1ST LINE	Property Damage Only	Unknown	Motor Vehicle
C	29-Apr-22	19:50	No	COUNTY ROAD 18	MULMUR TWP	AIRPORT RD	Non-Fatal Injury	Ability Impaired â€Alcohol	Motor Vehicle
C	12-Jun-22	10:54	No	COUNTY ROAD 18	MULMUR TWP		Property Damage Only	Improper turn	Motor Vehicle
C	15-Jun-22	9:30	No	COUNTY ROAD 18	MULMUR TWP	20 SIDEROAD	Property Damage Only	Mechanical failure	Motor Vehicle
C	15-Jun-22	14:40	No	COUNTY ROAD 17	MULMUR TWP	THOMSON	Property Damage Only	Driver fatigue	Motor Vehicle
C	07-Jun-22	11:45	No	COUNTY ROAD 18	MULMUR TWP	COUNTY ROAD 21	Property Damage Only	Animal - Wild or Domestic	Motor Vehicle
C	17-Jun-22	17:56	No	COUNTY ROAD 21	MULMUR TWP	2ND LINE	Non-Fatal Injury	Lost control	Motor Vehicle
C	17-Jun-22	8:30	No	89 89	MULMUR TWP	10 HY	Property Damage Only	Improper lane change	Motor Vehicle
C	17-Jun-22	21:45	No	10 SIDEROAD	MULMUR TWP	1ST LINE	Property Damage Only	Animal - Wild or Domestic	Motor Vehicle
C	20-Jun-22	5:22	No	COUNTY ROAD 18	MULMUR TWP	10 SIDEROAD	Property Damage Only	Animal - Wild or Domestic	Motor Vehicle
C	20-Jun-22	5:30	No	COUNTY ROAD 18	MULMUR TWP	15 SIDEROAD	Property Damage Only	Animal - Wild or Domestic	Motor Vehicle
C	14-Jun-22	17:03	No	5TH LINE	MULMUR TWP		Non-Fatal Injury	Speed -- too fast for conditions	Off-Road Vehicle
C	25-Jun-22	15:20	No	COUNTY ROAD 18	MULMUR TWP	5 SIDEROAD	Property Damage Only	Improper passing	Motor Vehicle
C	11-Jun-22	0:15	No	COUNTY ROAD 18	MULMUR TWP	5 SIDEROAD	Property Damage Only	Animal - Wild or Domestic	Motor Vehicle
C	30-Jun-22	16:57	No	COUNTY ROAD 18	MULMUR TWP	9 SIDEROAD	Non-Fatal Injury	Following too closely	Motor Vehicle



- 2016
- 2017
- 2018
- 2019
- 2020
- 2021
- 2022

Date

2016
2017
2018

Jurisdiction

ORANGEVILLE
SHELBURNE
SOUTHGATE TWP
WELLINGTON NOR...
(blank)
CLEARVIEW TWP
ERIN

Jurisdiction (Multiple Items)
Quarter (Multiple Items)

Quarter

Q1
Q2
Q3
Q4

Incident Type

Fatal Injury
Non-Fatal Injury
Other
Property Damage Only
(blank)

Count of Incident Type

Column Labels
Row Labels
2016
2017
2018
2019
2020
2021
2022
Grand Total

Fatal Injury			1	1		1		3
Non-Fatal Injury	22	21	20	15	15	13	15	121
Property Damage Only	86	95	88	87	64	91	89	600
Grand Total	108	116	109	103	79	105	104	724

Part 1 Summary for Mulmur

MULMUR	2021	2022
Jan	35	108
Feb	46	86
Mar	112	96
Apr	129	103
May	69	77
June	95	40
July	83	
Aug	75	
Sept	57	
Oct	63	
Nov	101	
Dec	64	
Total	929	510

Part 3 Summary for Mulmur

MULMUR	2021	2022
Jan	6	0
Feb	2	10
Mar	4	2
Apr	1	3
May	5	1
June	1	5
July	4	
Aug	6	
Sept	1	
Oct	2	
Nov	3	
Dec	5	
Total	40	21

Alarms in Mulmur April - June 2022- Total: 15

Call	Date	Location
Alarm	2022/04/06 09:05	757568 2 nd Line East
Alarm	2022/04/13 12:02	637106 Prince of Wales Road
Alarm	2022/04/19 10:58	708304 County Road 21
Alarm	2022/04/21 17:08	757233 2 nd Line East
Alarm	2022/04/23 18:34	716231 1 st Line East
Alarm	2022/04/29 16:42	937562 County Road 18
Alarm	2022/05/01 01:30	716231 1 st Line East
Alarm	2022/05/10 09:26	798475 3 rd Line East
Alarm	2022/05/15 13:56	638047 Prince of Wales Road
Alarm	2022/05/17 20:49	758310 2 nd Line East
Alarm	2022/05/28 17:38	606549 River Road
Alarm	2022/06/05 18:43	636427 County Road 19
Alarm	2022/06/22 22:18	747215 30 Sideroad
Alarm	2022/06/22 23:17	747215 30 Sideroad
Alarm	2022/06/24 12:37	837675 4 th Line East

ACTION PLAN Township of Mulmur

Foot Patrol Hours

2022 – YTD:	8.75
April:	0.00
May:	2.25
June:	0.50

R.I.D.E. Hours

2022 – YTD:	29.50
April:	4.00
May:	5.50
June:	8.25

Trouble with Youth Occurrences

2022 – YTD:	3
April:	0
May:	1
June:	0

Mental Health Occurrences

2022 – YTD:	12
April:	1
May:	2
June:	3

Arrests – Impaired by Alcohol

2022 – YTD:	3
April:	0
May:	1
June:	0

Distracted Driving Charges

2022 – YTD:	4
April:	0
May:	0
June:	0

AUXILIARY UNIT:

<u>Unit Hours</u>	<u>Q1</u>	<u>April</u>	<u>May</u>	<u>June</u>
Administration	157.75	46.25	58.25	49.50
Training	112.50	59.25	50.00	21.25
Special Detail	241.75	1.00	16.75	1.00
Cruiser Patrol	15.75	11.00	21.00	17.50
ATV Patrol	0.00	0.00	0.00	7.00
Foot Patrol	73.00	39.75	51.50	68.00
Community Policing	5.50	0.00	21.00	66.00
TOTAL	606.25	157.25	218.50	230.25



2022-07-08

DUFFERIN OPP CONDUCTING ENFORCEMENT ON LOUD AND MODIFIED VEHICLES

FROM/DE: Dufferin Detachment

DATE: July 8, 2022

DUFFERIN OPP CONDUCTING ENFORCEMENT ON LOUD AND MODIFIED VEHICLES

(DUFFERIN, ON) - Members of the Dufferin Detachment of the Ontario Provincial Police (OPP) have been listening to our Dufferin County community. Loud and modified vehicles have become a concern and residents have made it clear that noise pollution from vehicles is making it difficult to enjoy our beautiful communities.

A focus of Dufferin OPP will be to reduce the number of motor vehicles with modified or excessively loud exhaust systems on our roads. Drivers could be subject to charges under the Highway Traffic Act.

The Highway Traffic Act of Ontario indicates that a person having control of a vehicle shall not "make unreasonable noise, and a driver of any motor vehicle shall not permit any unreasonable amount of smoke to escape from their motor vehicle, nor shall such driver at any time cause the vehicle to make any unnecessary noise".

Vehicles found by officers to be unlawfully modified will be reported to the Insurance Bureau of Canada with the potential of a policy suspension. Dufferin OPP encourages vehicle owners to repair modified exhaust systems and avoid using mechanisms to alter or increase their vehicle's sound.

Our Dufferin County roadways are meant to be shared and enjoyed by everyone, please keep this in mind when operating a motor vehicle.

The Dufferin OPP is committed to public safety, delivering proactive and innovative policing in partnership with our communities. Officers value your contribution to building safe communities. If you have information about suspected unlawful activity, please contact the OPP at 1-888-310-1122 or Crime Stoppers to remain anonymous at 1-800-822-8477 (TIPS) or www.ontariocrimestoppers.ca

Media Contact

Provincial Constable Jennifer Roach

Dufferin OPP Detachment

519-278-6510

Jennifer.Roach@opp.ca

Follow Us

#DufferinOPP

Twitter @OPP_CR

Facebook @OPPCentralRegion



2022-07-04

DUFFERIN OPP CANADA DAY WEEK TRAFFIC CAMPAIGN RESULTS

FROM/DE: Dufferin Detachment

DATE: July 4, 2022

DUFFERIN OPP CANADA DAY WEEK TRAFFIC CAMPAIGN RESULTS

(DUFFERIN, ON) - June 26 to July 3, 2022, marked the Canada Day Week traffic safety campaign. Members of the Dufferin Detachment of the Ontario Provincial Police (OPP) participated in this campaign that is designed to save lives and reduce injuries on Ontario's roads, trails and waterways.

Dufferin OPP officers laid 528 driving related criminal charges and Provincial Offences Notices during the campaign, with the following breakdown:

- Speeding - 343
- Impaired Driving - 4
- Distracted Driving - 15
- Stunt Driving - 5
- Seatbelts - 19
- Other Provincial Offences - 141

Dufferin OPP officers also issued 169 warnings to drivers. Warnings are an important component of road safety, as they allow officers the opportunity engage with drivers and educate about road safety.

In this one-week period, Dufferin OPP responded to 36 motor vehicle collisions, with zero fatalities, which is the statistic that Dufferin OPP is most grateful for.

The Dufferin OPP is committed to public safety, delivering proactive and innovative policing in partnership with our communities. Officers value your contribution to building safe communities. If you have information about suspected unlawful activity, please contact the OPP at 1-888-310-1122 or Crime Stoppers to remain anonymous at 1-800-822-8477 (TIPS) or www.ontariocrimestoppers.ca

Media Contact

Provincial Constable Jennifer Roach

Dufferin OPP Detachment

519-278-6510

Jennifer.Roach@opp.ca

Follow Us

#DufferinOPP

Twitter @OPP_CR

Facebook @OPPCentralRegion