

Draft Plan of Subdivision
 Part of the East Half of Lot 1 And,
 Part of the East Half of Lot 2,
 Concession 2,
 West of Hurontario Street
 Township of Mulmur, County of Dufferin

OWNER'S CERTIFICATE
 I, THE UNDERSIGNED, BEING THE REGISTERED OWNER OF THE SUBJECT LANDS, HEREBY AUTHORIZE THE JONES CONSULTING GROUP LTD., TO PREPARE THIS DRAFT PLAN OF SUBDIVISION AND TO SUBMIT SAME TO THE TOWNSHIP OF MULMUR FOR APPROVAL.

DATE: 636040 Prince of Wales Road: Deltini Commercial Developments Inc. 506249 Highway 89: Deltini (Mulmur) Inc. 506243 Highway 89: Deltini (Primrose) Inc.

SURVEYOR'S CERTIFICATE
 I CERTIFY THAT THE BOUNDARIES OF THE LANDS TO BE SUBDIVIDED AND THEIR RELATIONSHIP TO ADJACENT LANDS ARE ACCURATELY AND CORRECTLY SHOWN.

DATE: RUDY MAK, OLS

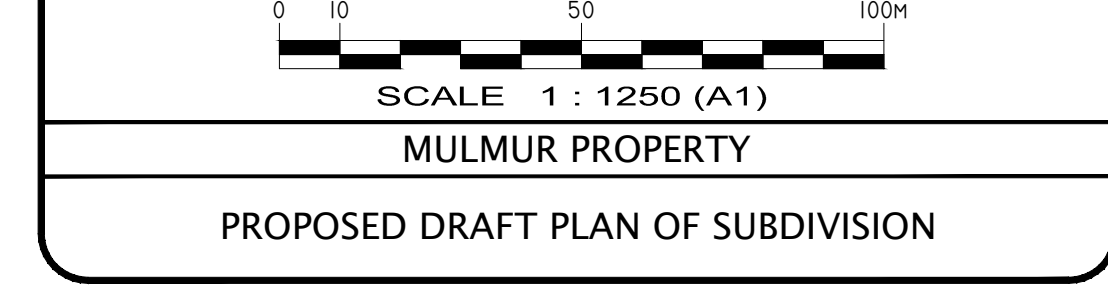
ADDITIONAL INFORMATION REQUIRED UNDER SECTION 51(17) OF THE PLANNING ACT

a) SHOWN ON DRAFT PLAN
 b) SHOWN ON DRAFT PLAN
 c) SHOWN ON KEY PLAN
 d) INDUSTRIAL, EP & SWM
 e) SHOWN ON DRAFT PLAN
 f) SHOWN ON DRAFT PLAN

g) SHOWN ON DRAFT PLAN
 h) MUNICIPAL PIPED WATER TO BE PROVIDED
 i) SANDY/CLAY LOAM
 j) SHOWN ON DRAFT PLAN
 k) ALL MUNICIPAL SERVICES TO BE PROVIDED
 l) SHOWN ON DRAFT PLAN

| STATISTICS | AREA (ha.) |
|--|------------------|
| Industrial Blocks (Blocks 1 - 4) | 24.42 ha. |
| Primrose Parking & Access (Block 5) | 0.54 ha. |
| Environmental Protection (Block 6) | 8.31 ha. |
| Stormwater Management (Block 7) | 2.23 ha. |
| Snow Storage (Block 8) | 0.12 ha. |
| Daylighting and 0.3m Reserves (Block 9 - 13) | 0.03 ha. |
| Road (Street 'A') | 1.34 ha. |
| TOTAL | 36.99 ha. |

| SCHEDULE OF REVISIONS | | |
|-----------------------|---|--------|
| DATE | DESCRIPTION | DRAWN |
| OCT. 20/2020 | REVISIONS AS PER COMMENTS | m.c.r. |
| JAN. 11/2021 | REVISIONS AS PER ENG. COMMENTS | m.c.r. |
| MARCH 22/2021 | REVISIONS OLS | m.c.r. |
| APRIL 1/2021 | ADD ENVIRONMENTAL LINENWORK FROM WSP | m.c.r. |
| APRIL 15/2021 | UPDATE ENVIRONMENTAL LINENWORK LABELS | m.c.r. |
| APRIL 29/2021 | UPDATE EASEMENT AS PER ENG REVISION | m.c.r. |
| JUNE 2/2021 | NEW BDY FROM OLS/UPDATE DP ACCORDINLY | m.c.r. |
| DEC. 23/2022 | NEW BIRKS LINENWORK/ REVISE SETTLEMENT BNDY TO OP | m.c.r. |
| JAN. 31/2023 | NEW BIRKS LINENWORK/ REVISE SETTLEMENT BNDY TO OP | m.c.r. |
| FEB. 7/2023 | NEW ENG SWM POND LAYOUT/ SCHOOL PARKING BLK | m.c.r. |
| FEB. 15/2023 | PREP FOR SUBMISSION | m.c.r. |
| FEB. 22/2023 | ADD NEW EASEMENTS/FINALIZE FOR SUBMISSION | m.c.r. |



Date Issued: JULY 9, 2020

Checked By: RD

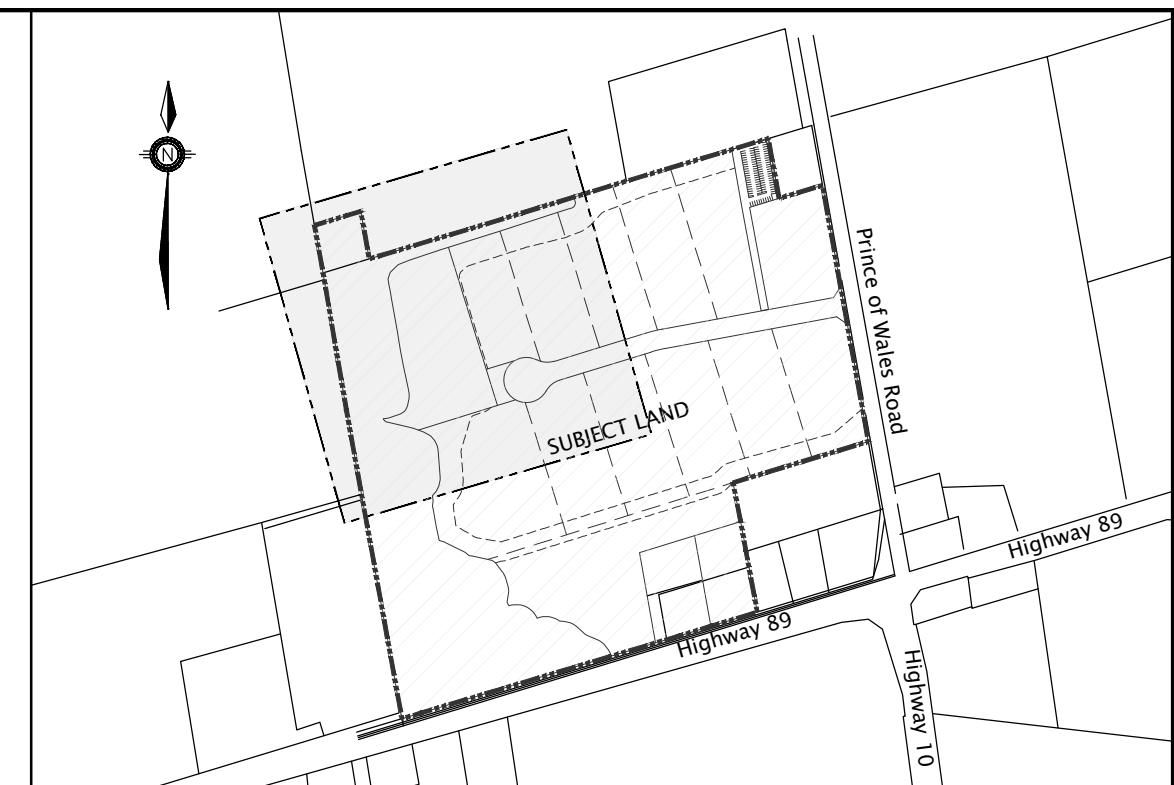
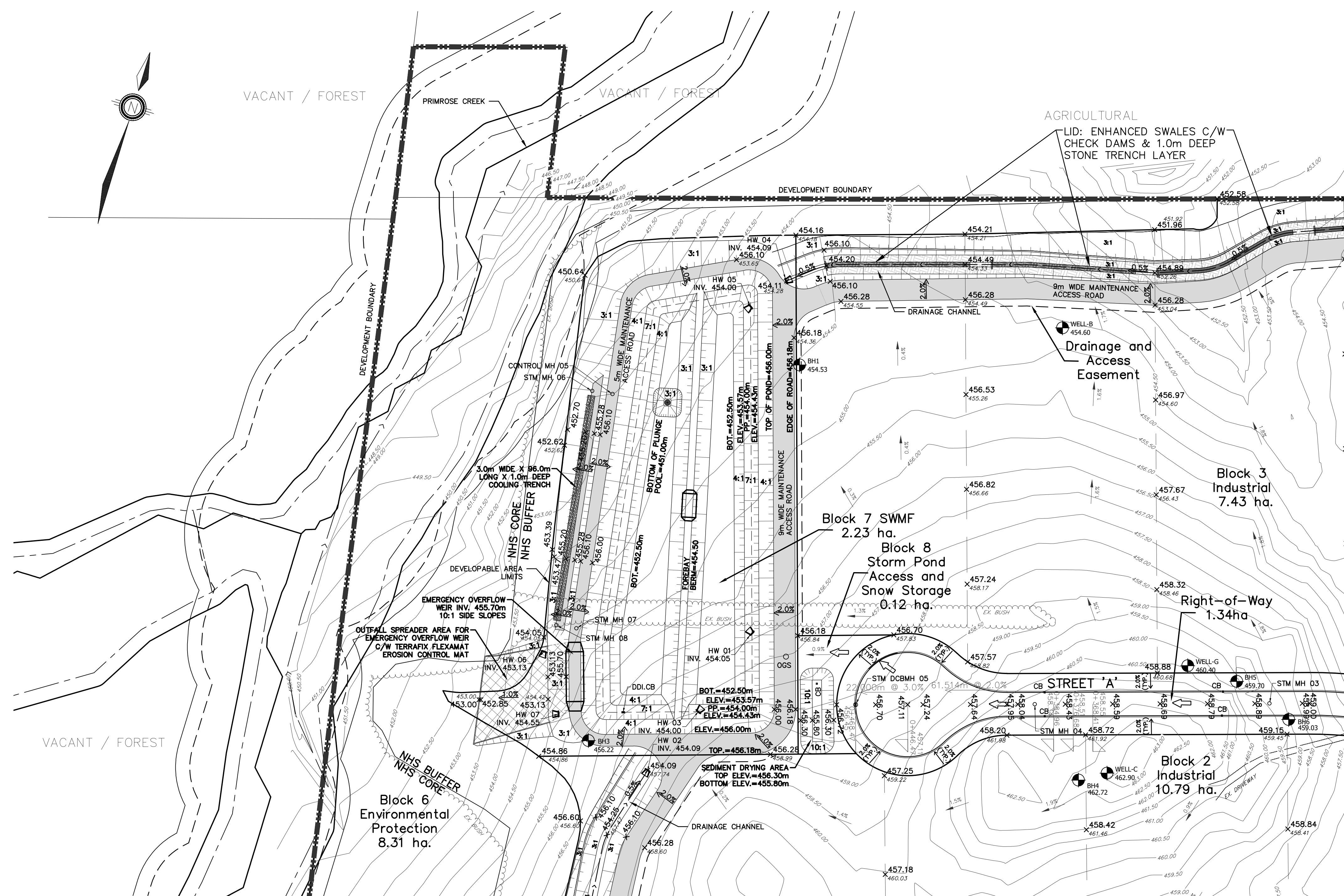
Project No.: FRE-17110

Drawn By: m.c.r.

Drawing Name: FRE-17110-DP-2.dwg

DRAFT PLAN OF SUBDIVISION
HAMLET OF PRIMROSE, TOWNSHIP OF MULMUR

G:\Planning Drawings\FRE-17110-Mulmur\Submission\Feb2023\FRE-17110-DP-2.dwg Layout:DP Plotted: Jul 25, 2023 @ 8:34am by vsperandim The Jones Consulting Group Ltd.



KEY PLAN
NTS

LEGEND

| | |
|--|---|
| | LIMIT OF SUBDIVISION |
| | EX. CONTOUR AND ELEVATION |
| | EX. DITCH |
| | PROP. STM MH |
| | PROP. STM DOUBLE CATCHBASIN |
| | PROP. STM CATCHBASIN |
| | SLOPE (3:1 MAX.) |
| | ID# & GROUNDWATER ELEVATION |
| | WATER SUPPLY WELLS |
| | MAJOR OVERLAND FLOW ROUTE |
| | GRADE CHANGE FLAG |
| | ROAD LENGTH & GRADE |
| | PROPOSED ELEVATION |
| | EXISTING ELEVATION |
| | DRAINAGE CHANNEL |
| | EX. DITCH |
| | WATERCOURSE |
| | MEANDER BELT WIDTH |
| | 6M BUFFER OF MEANDER BELT WIDTH |
| | REGIONAL FLOODLINE EXISTING CONDITIONS |
| | 6M BUFFER OF REGIONAL FLOODLINE EXISTING CONDITIONS |

REFER TO DRAWING GP-2

REFER TO DRAWING GP-3

G:\Eng_3D\FRE-17110\Production\DWGS\FRE-17110 GRADING.dwg Layout:GP-1 Plotted Jul 26, 2024 @ 8:38am by: vsperrandm The Jones Consulting Group Ltd.

BENCHMARK:
ELEVATIONS ARE GEODETIC AND ARE DERIVED BY REAL TIME OBSERVATIONS, USING THE CAN-NET NETWORK, UTM ZONE 17, NAD83 (CSRS)(2010).

| NO. | REVISIONS | DATE | INITIAL |
|-----|-------------------------------|----------|---------|
| 4. | 2nd SUBMISSION FOR DPA & ZBLA | JUL 2024 | MF |
| 3. | SUBMITTED FOR DPA & ZBLA | MAY 2021 | MF |
| 2. | PRELIMINARY FSR/SWMR | AUG 2020 | MF |
| 1. | CONCEPTUAL DESIGN | MAY 2020 | MF |



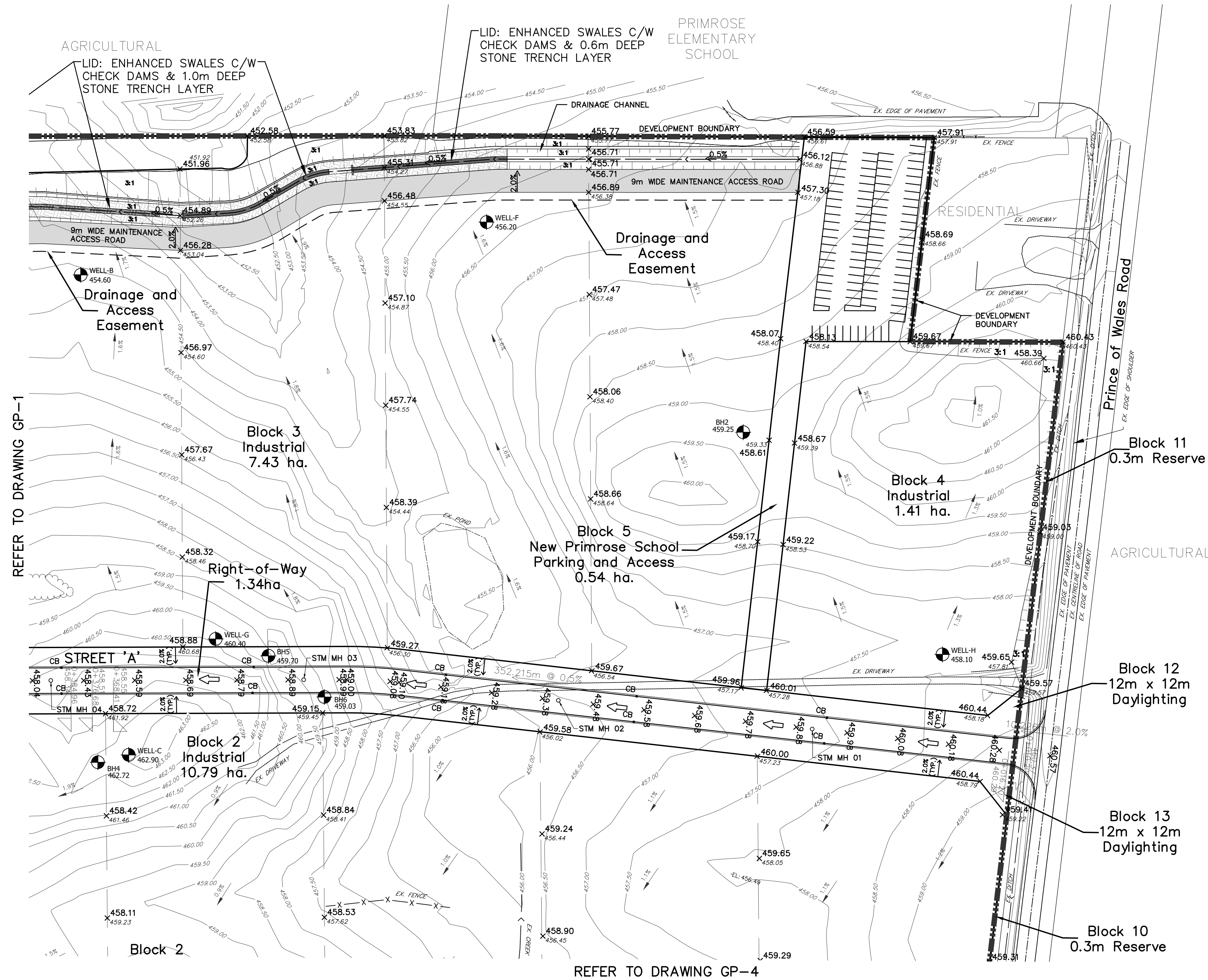
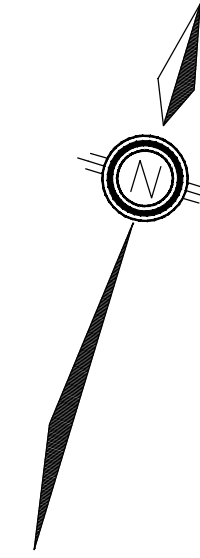
DEL TINI COMMERCIAL DEVELOP. LTD
636040 PRINCE OF WALES ROAD
MULMUR PROPERTY

OVERALL GRADING PLAN

JONES CONSULTING GROUP LTD.
PLANNERS & ENGINEERS

229 Mapleview Dr. E. Unit 1
Barrie, ON L4N 0W5
P. 705.734.2538
F. 705.734.1056

| | | | | |
|---------|-------|---------------|-----------|----------|
| DESIGN | VBS | SCALE: 1:1000 | DATE | MAY 2021 |
| DRAWN | VBS | PROJECT | FRE-17110 | DWG. NO |
| CHECKED | MF/DR | | | GP-1 |



KEY PLAN
NTS

LEGEND

- LIMIT OF SUBDIVISION
- EX. CONTOUR AND ELEVATION
- EX. DITCH
- PROP. STM MH
- PROP. STM DOUBLE CATCHBASIN
- PROP. STM CATCHBASIN
- SLOPE (3:1 MAX.)
- EX. BOREHOLE LOCATION ID# & GROUNDWATER ELEVATION
- WATER SUPPLY WELLS
- MAJOR OVERLAND FLOW ROUTE
- GRADE CHANGE FLAG
- ROAD LENGTH & GRADE
- PROPOSED ELEVATION
- EXISTING ELEVATION
- DRAINAGE CHANNEL & EX. DITCH
- WATERCOURSE
- MEANDER BELT WIDTH
- 6M BUFFER OF MEANDER BELT WIDTH
- REGIONAL FLOODLINE EXISTING CONDITIONS
- 6M BUFFER OF REGIONAL FLOODLINE EXISTING CONDITIONS

G:\Eng_3D\FRE-17110\Production\DWG\FRE-17110_GRP.DWG Layout:GP-2, Pinned Jul 24, 2024 @ 4:13pm by vsperridon. The Jones Consulting Group Ltd.

BENCHMARK:
ELEVATIONS ARE GEODETIC AND ARE DERIVED BY REAL TIME OBSERVATIONS, USING THE CAN-NET NETWORK, UTM ZONE 17, NAD83 (CSRS)(2010).

| NO. | REVISIONS | DATE | INITIAL |
|-----|-------------------------------|----------|---------|
| 4. | 2nd SUBMISSION FOR DPA & ZBLA | JUL 2024 | MF |
| 3. | SUBMITTED FOR DPA & ZBLA | MAY 2021 | MF |
| 2. | PRELIMINARY FSR/SWMR | AUG 2020 | MF |
| 1. | CONCEPTUAL DESIGN | MAY 2020 | MF |

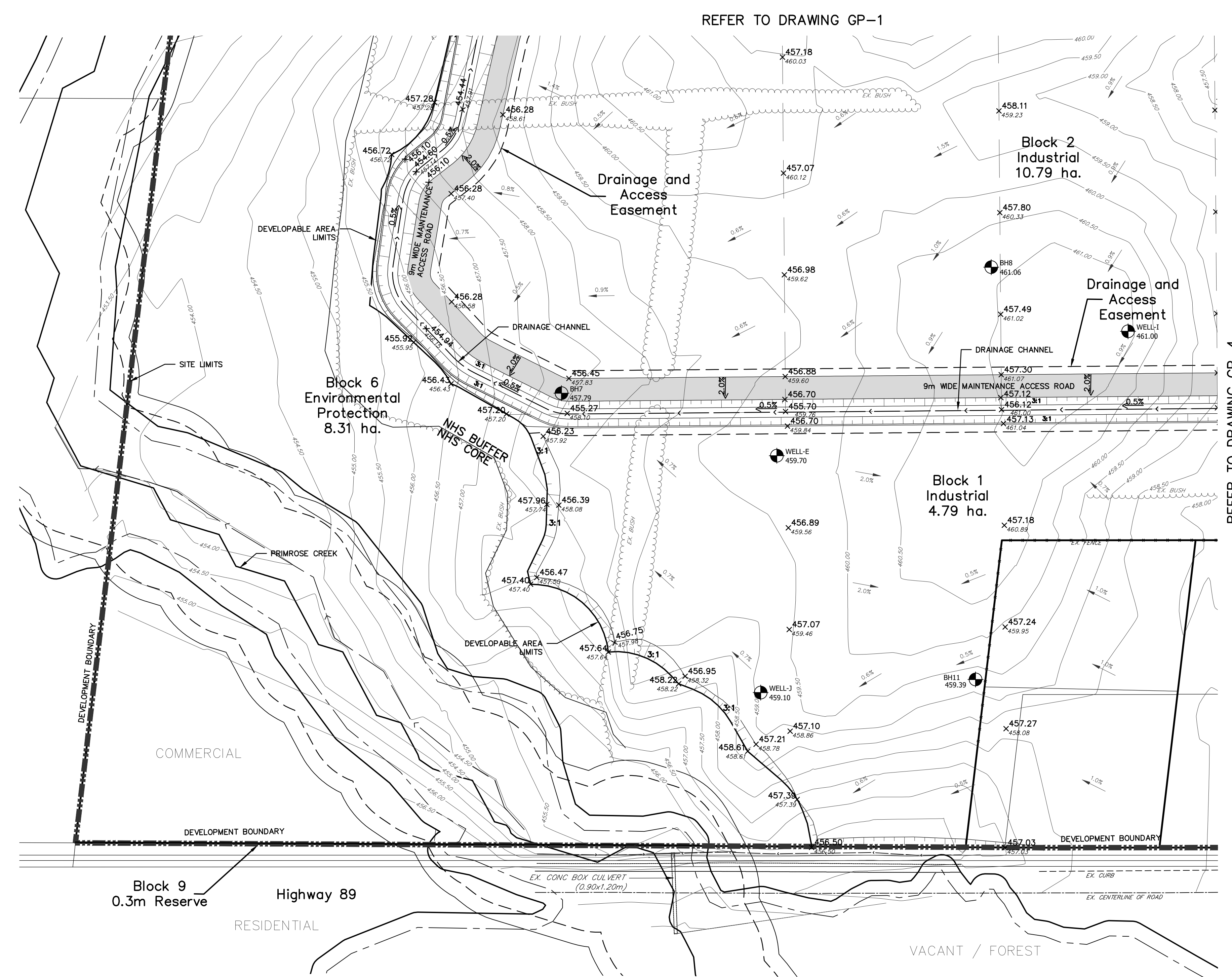
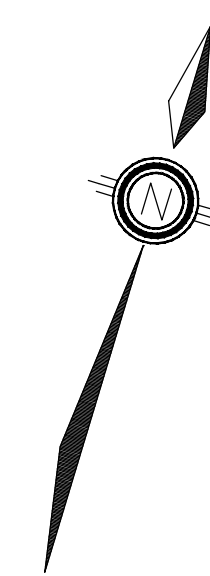


DELTINI COMMERCIAL DEVELOP. LTD
636040 PRINCE OF WALES ROAD
MULMUR PROPERTY

JONES CONSULTING GROUP LTD.
PLANNERS & ENGINEERS
229 Mapleview Dr. E. Unit 1
Barrie, ON L4N 0W5
P. 705.734.2538
F. 705.734.1056

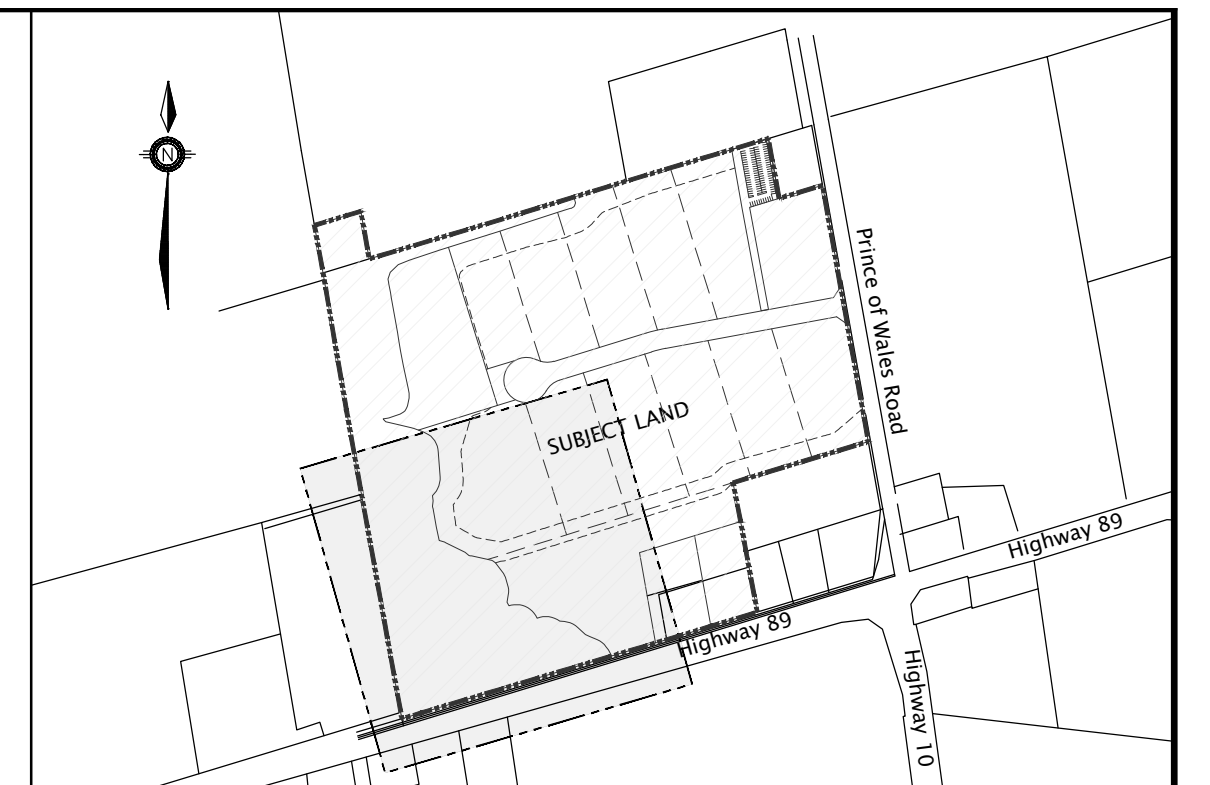
OVERALL GRADING PLAN

| | | | | |
|---------|-------|---------------|---------|----------|
| DESIGN | VBS | SCALE: 1:1000 | DATE | MAY 2021 |
| DRAWN | VBS | PROJECT | DWG. NO | |
| CHECKED | MF/DR | FRE-17110 | GP-2 | |



REFER TO DRAWING GP-1

REFER TO DRAWING GP-4



KEY PLAN
NTS

LEGEND

- LIMIT OF SUBDIVISION
- EX. CONTOUR AND ELEVATION
- EX. DITCH
- STM 01
- STM DCBMH 05
- CB
- SLOPE (3:1 MAX.)
- B#4 462.72
- WELL-C 462.90
- WATER SUPPLY WELLS
- MAJOR OVERLAND FLOW ROUTE
- GRADE CHANGE FLAG
- ROAD LENGTH & GRADE
- PROPOSED ELEVATION
- EXISTING ELEVATION
- DRAINAGE CHANNEL
- EX. DITCH
- WATERCOURSE
- MEANDER BELT WIDTH
- 6M BUFFER OF MEANDER BELT WIDTH
- REGIONAL FLOODLINE EXISTING CONDITIONS
- 6M BUFFER OF REGIONAL FLOODLINE EXISTING CONDITIONS

G:\Eng_3D\FRE-17110\Production DWG\FRE-17110 GRADING.dwg Layout:GP-3 Plotted Jul 24, 2024 @ 4:37pm by vsperrden The Jones Consulting Group Ltd.

BENCHMARK:
ELEVATIONS ARE GEODETIC AND ARE DERIVED BY REAL TIME OBSERVATIONS, USING THE CAN-NET NETWORK, UTM ZONE 17, NAD83 (CSRS)(2010).

| NO. | REVISIONS | DATE | INITIAL |
|-----|-------------------------------|----------|---------|
| 4. | 2nd SUBMISSION FOR DPA & ZBLA | JUL 2024 | MF |
| 3. | SUBMITTED FOR DPA & ZBLA | MAY 2021 | MF |
| 2. | PRELIMINARY FSR/SWMR | AUG 2020 | MF |
| 1. | CONCEPTUAL DESIGN | MAY 2020 | MF |



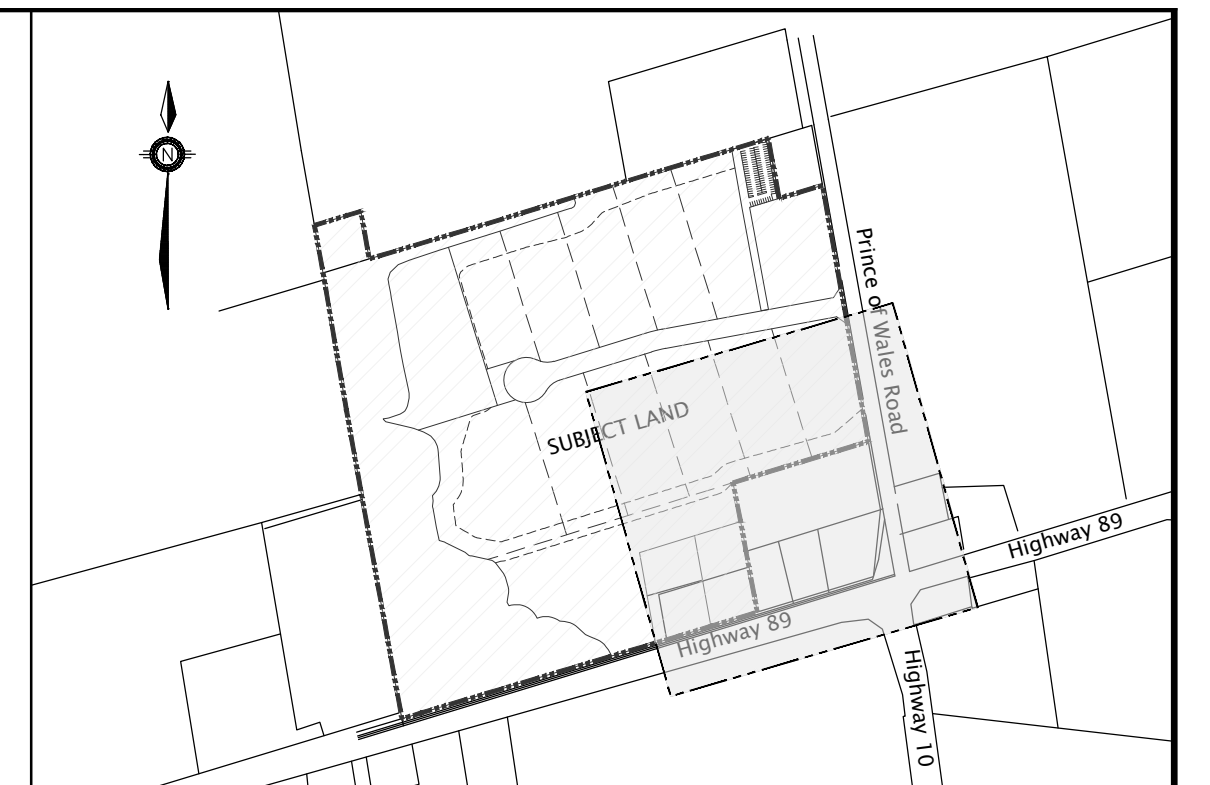
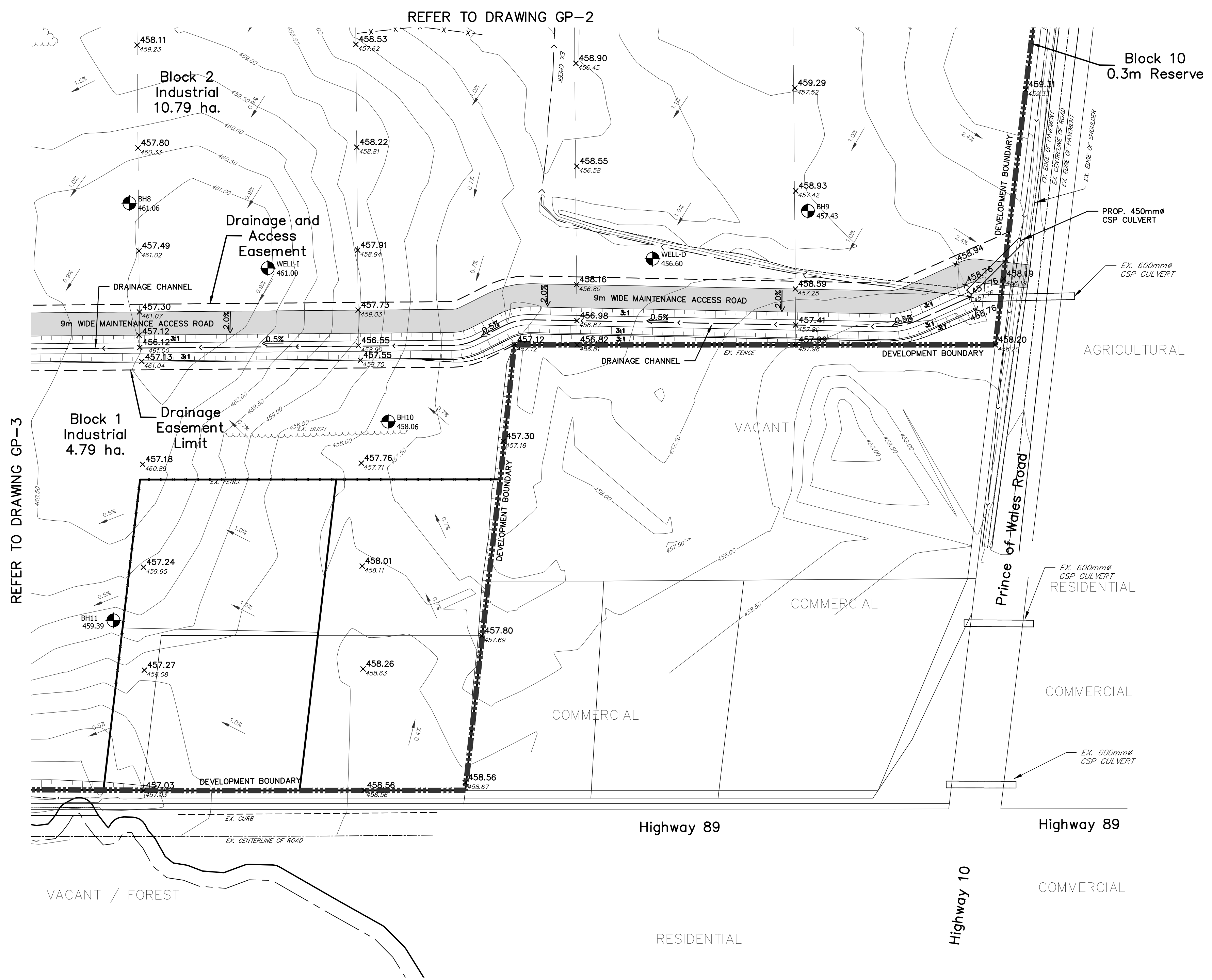
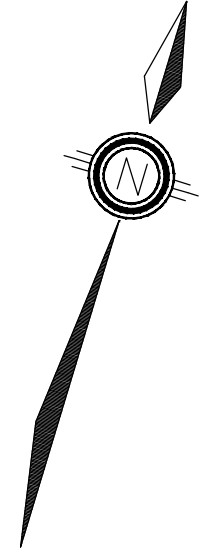
DELTINI COMMERCIAL DEVELOP. LTD
636040 PRINCE OF WALES ROAD
MULMUR PROPERTY

OVERALL GRADING PLAN

JONES
CONSULTING GROUP LTD.
PLANNERS & ENGINEERS

229 Mapleview Dr. E. Unit 1
Barrie, ON L4N 0W5
P. 705.734.2538
F. 705.734.1056

| | | | | |
|---------|-------|---------------|---------|----------|
| DESIGN | VBS | SCALE: 1:1000 | DATE | MAY 2021 |
| DRAWN | VBS | PROJECT | DWG. NO | |
| CHECKED | MF/DR | FRE-17110 | GP-3 | |



KEY PLAN
NTS

LEGEND

- LIMIT OF SUBDIVISION
- - - EX. CONTOUR AND ELEVATION
- - - EX. DITCH
- PROP. STM MH
- ⊗ PROP. STM DOUBLE CATCHBASIN
- PROP. STM CATCHBASIN
- ▬ SLOPE (3:1 MAX.)
- ⊙ EX. BOREHOLE LOCATION ID# & GROUNDWATER ELEVATION
- ⊙ WELL-C 462.90
- ⊙ WELL-D 456.60
- ➔ MAJOR OVERLAND FLOW ROUTE
- ▬ GRADE CHANGE FLAG
- ⊙ ROAD LENGTH & GRADE
- ⊙ PROPOSED ELEVATION
- ⊙ EXISTING ELEVATION
- ▬ DRAINAGE CHANNEL
- - - EX. DITCH
- ▬ WATERCOURSE
- - - MEANDER BELT WIDTH
- - - 6M BUFFER OF MEANDER BELT WIDTH
- - - REGIONAL FLOODLINE EXISTING CONDITIONS
- - - 6M BUFFER OF REGIONAL FLOODLINE EXISTING CONDITIONS

G:\Eng_3D\FRE-17110\Production\DWG\FRE-17110_GROUNDING.dwg Layout:GP-4 Plotted Jul 24, 2024 @ 4:38pm by vsperrand. The Jones Consulting Group Ltd.

| | | | |
|--|-------------------------------|----------|---------|
| BENCHMARK: ELEVATIONS ARE GEODETIC AND ARE DERIVED BY REAL TIME OBSERVATIONS, USING THE CAN-NET NETWORK, UTM ZONE 17, NAD83 (CSRS)(2010). | | | |
| 4. | 2nd SUBMISSION FOR DPA & ZBLA | JUL 2024 | MF |
| 3. | SUBMITTED FOR DPA & ZBLA | MAY 2021 | MF |
| 2. | PRELIMINARY FSR/SWMR | AUG 2020 | MF |
| 1. | CONCEPTUAL DESIGN | MAY 2020 | MF |
| NO. | REVISIONS | DATE | INITIAL |



DELTINI COMMERCIAL DEVELOP. LTD
636040 PRINCE OF WALES ROAD
MULMUR PROPERTY

OVERALL GRADING PLAN

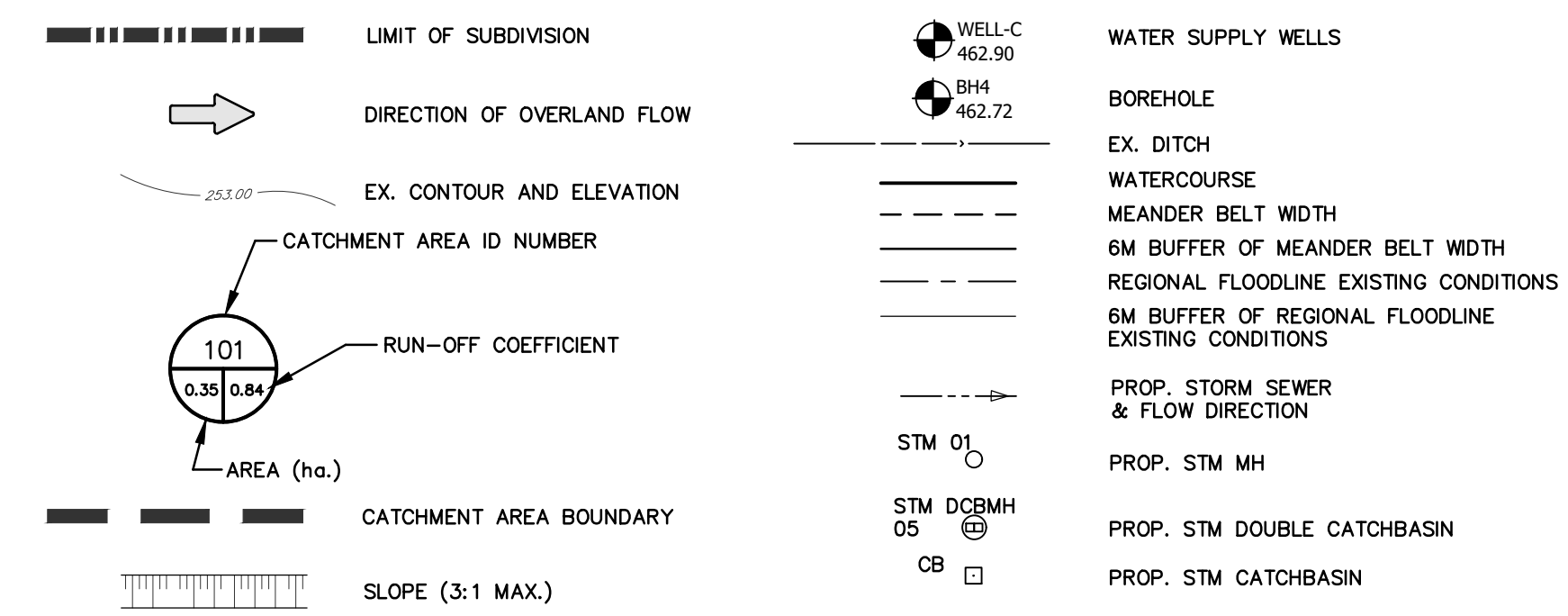
JONES CONSULTING GROUP LTD.
PLANNERS & ENGINEERS

229 Mapleview Dr. E. Unit 1
Barrie, ON L4N 0W5
P. 705.734.2538
F. 705.734.1056

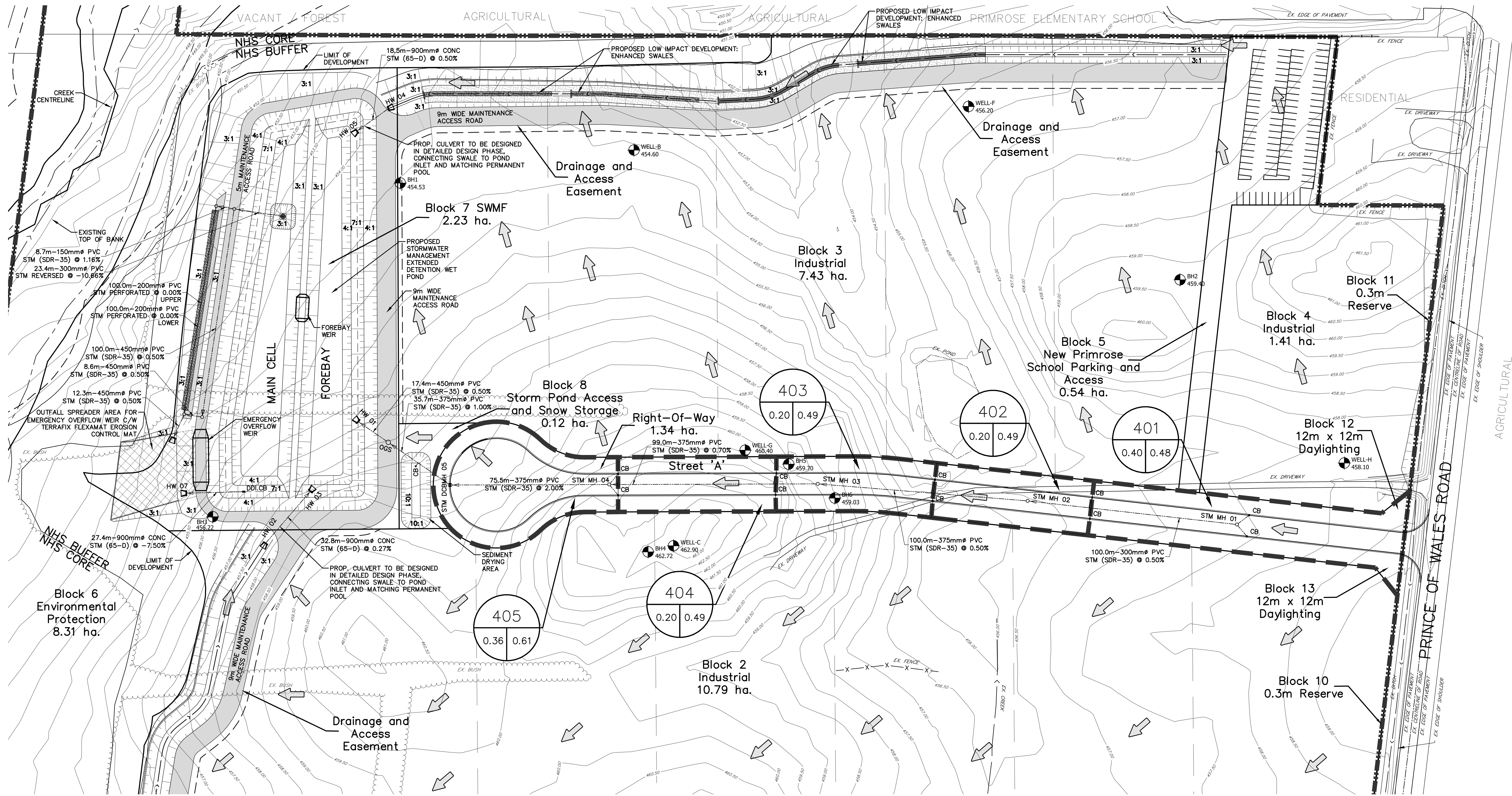
| | | | | |
|---------|-------|---------------|---------|----------|
| DESIGN | VBS | SCALE: 1:1000 | DATE | MAY 2021 |
| DRAWN | VBS | PROJECT | DWG. NO | |
| CHECKED | MF/DR | FRE-17110 | GP-4 | |

| 5 Year Storm Sewer Sizing | | | | | | | | | | | | | | | | | |
|---------------------------|-------|--------------|-----------------------|-------|-----------|---|------|-------|-----------|------|-------------|---------|------|-----|--------|--------|--------|
| STREET | AREAS | MANHOLE | LENGTH | | INCREMENT | | | TOTAL | FLOW TIME | | I | TOTAL Q | S | D | Q FULL | V FULL | % FULL |
| | | | FROM | TO | (m) | C | A | CA | CA | TO | | | | | | | |
| Street 'A' | 401 | STM MH 01 | STM MH 02 | 100.0 | 0.48 | 0.40 | 0.19 | 0.19 | 10.00 | 1.72 | 109 | 0.059 | 0.50 | 300 | 0.068 | 1.0 | 85.6 |
| Street 'A' | 402 | STM MH 02 | STM MH 03 | 100.0 | 0.49 | 0.20 | 0.10 | 0.29 | 11.72 | 1.48 | 100 | 0.080 | 0.50 | 375 | 0.124 | 1.1 | 64.8 |
| Street 'A' | 403 | STM MH 03 | STM MH 04 | 99.0 | 0.49 | 0.20 | 0.10 | 0.38 | 13.21 | 1.24 | 94 | 0.100 | 0.70 | 375 | 0.147 | 1.3 | 68.2 |
| Street 'A' | 404 | STM MH 04 | STM DCBMH 05 | 75.5 | 0.49 | 0.20 | 0.10 | 0.48 | 14.45 | 0.56 | 89 | 0.119 | 2.00 | 375 | 0.248 | 2.2 | 47.8 |
| Block 8 | 405 | STM DCBMH 05 | OGS | 35.7 | 0.61 | 0.36 | 0.22 | 0.70 | 15.01 | 0.37 | 87 | 0.170 | 1.00 | 375 | 0.175 | 1.6 | 96.7 |
| Block 7 | | OGS | HW 01 | 17.4 | | | | 0.70 | 15.39 | 0.23 | 86 | 0.167 | 0.50 | 450 | 0.202 | 1.3 | 82.9 |
| Total | | | | | | 1.35 | 0.70 | | | | | | | | | | |
| Q= C*I*A / 360 (cms); | | | C= RUNOFF COEFFICIENT | | | I=RAINFALL INTENSITY (5 Year) = 853.608 / (td+4.699) ^{0.766} | | | | | A=AREA (ha) | | | | | | |

LEGEND



KEY PLAN
NTS



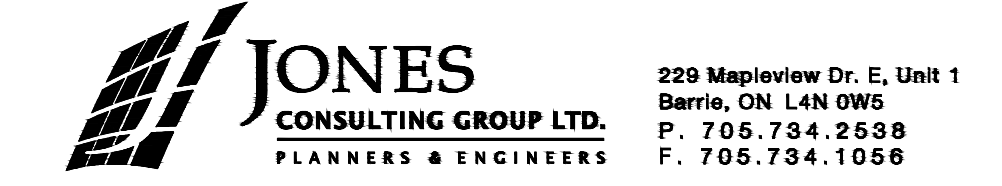
BENCHMARK:
ELEVATIONS ARE GEODETIC AND ARE DERIVED BY REAL TIME OBSERVATIONS, USING THE CAN-NET NETWORK, UTM ZONE 17, NAD83 (CSRS)(2010).

| NO. | REVISIONS | DATE | INITIAL |
|-----|-------------------------------|----------|---------|
| 4. | 2nd SUBMISSION FOR DPA & ZBLA | JUL 2024 | MF |
| 3. | SUBMITTED FOR DPA & ZBLA | MAY 2021 | MF |
| 2. | PRELIMINARY FSR/SWMR | AUG 2020 | MF |
| 1. | CONCEPTUAL DESIGN | MAY 2020 | MF |



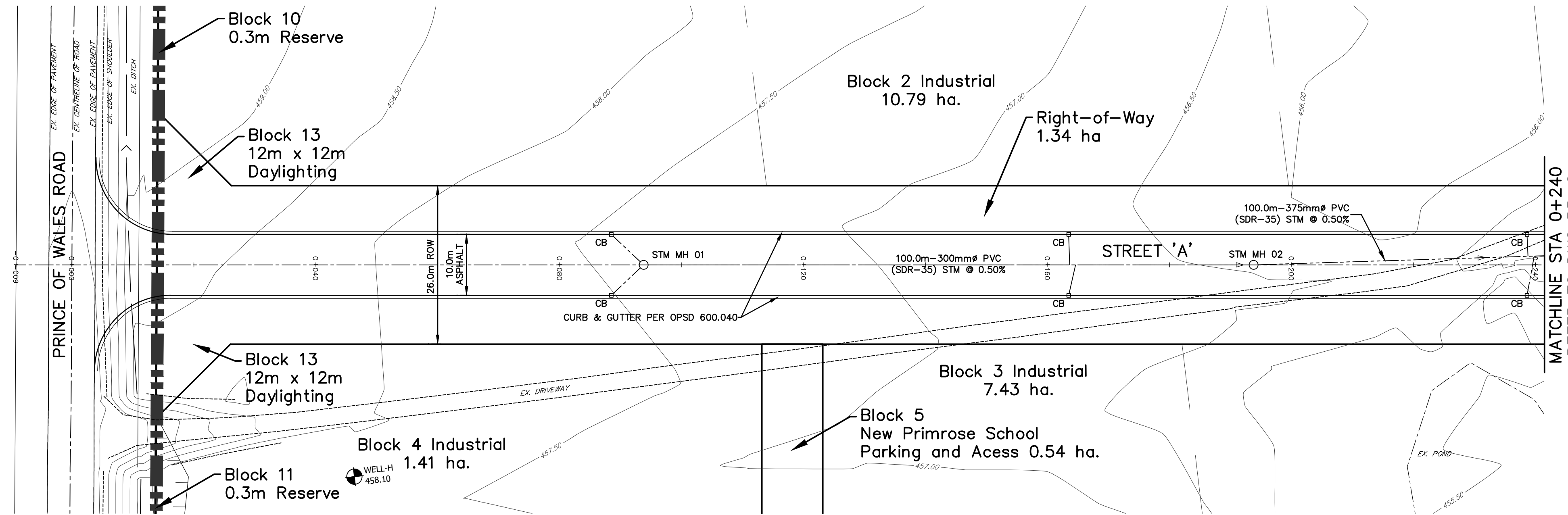
DELTINI COMMERCIAL DEVELOP. LTD
636040 PRINCE OF WALES ROAD
MULMUR PROPERTY

STORM DRAINAGE PLAN &
STORM SEWER DESIGN SHEET



| | | | | |
|---------|-------|---------------|---------|----------|
| DESIGN | VBS | SCALE: 1:1000 | DATE | MAY 2021 |
| DRAWN | VBS | PROJECT | DWG. NO | |
| CHECKED | MF/DR | FRE-17110 | STM-1 | |

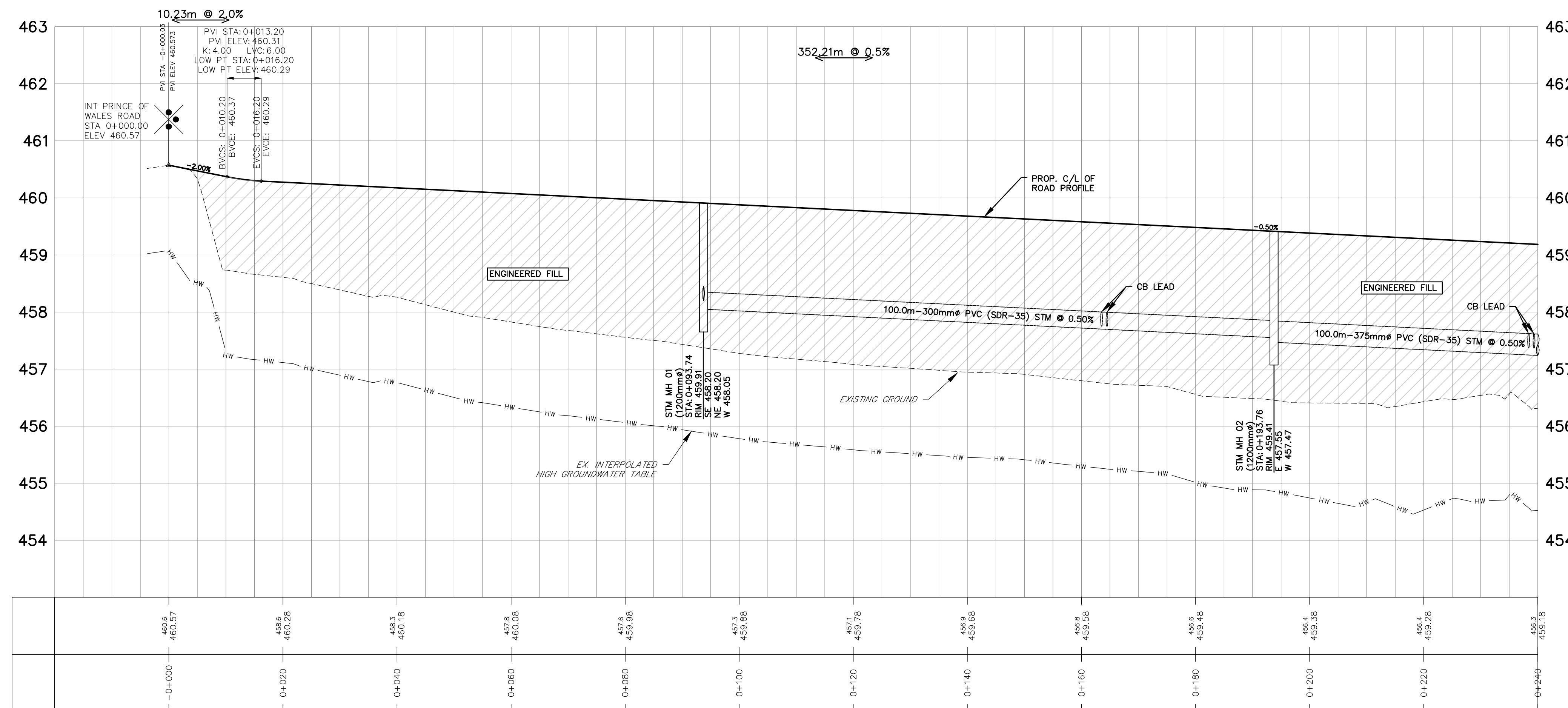
G:\Eng-3D\FRE-17110\Production\DWG\FRE-17110-STORM-DRAINAGE.dwg Layout:STM-1 Plotted: Jul 24, 2024 @ 4:43pm by vester@deltni.com The Jones Consulting Group Ltd.



KEY PLAN
NTS

LEGEND

- LIMIT OF SUBDIVISION
- EX. CONTOUR AND ELEVATION
- EX. DITCH
- STORM MANHOLE
- CATCHBASIN
- DOUBLE CATCHBASIN
- PROP. STORM SEWER & FLOW DIRECTION
- PROP. STM DOUBLE CATCHBASIN
- BOREHOLE
- SLOPE (3:1 MAX.)
- ROAD LENGTH & GRADE
- ENGINEERED FILL
- WATER SUPPLY WELLS



BENCHMARK:

ELEVATIONS ARE GEODETIC AND ARE DERIVED BY REAL TIME OBSERVATIONS, USING THE CAN-NET NETWORK, UTM ZONE 17, NAD83 (CSRS)(2010).

| NO. | REVISIONS | DATE | INITIAL |
|-----|-------------------------------|----------|---------|
| 4. | 2nd SUBMISSION FOR DPA & ZBLA | JUL 2024 | MF |
| 3. | SUBMITTED FOR DPA & ZBLA | MAY 2021 | MF |
| 2. | PRELIMINARY FSR/SWMR | AUG 2020 | MF |
| 1. | CONCEPTUAL DESIGN | MAY 2020 | MF |

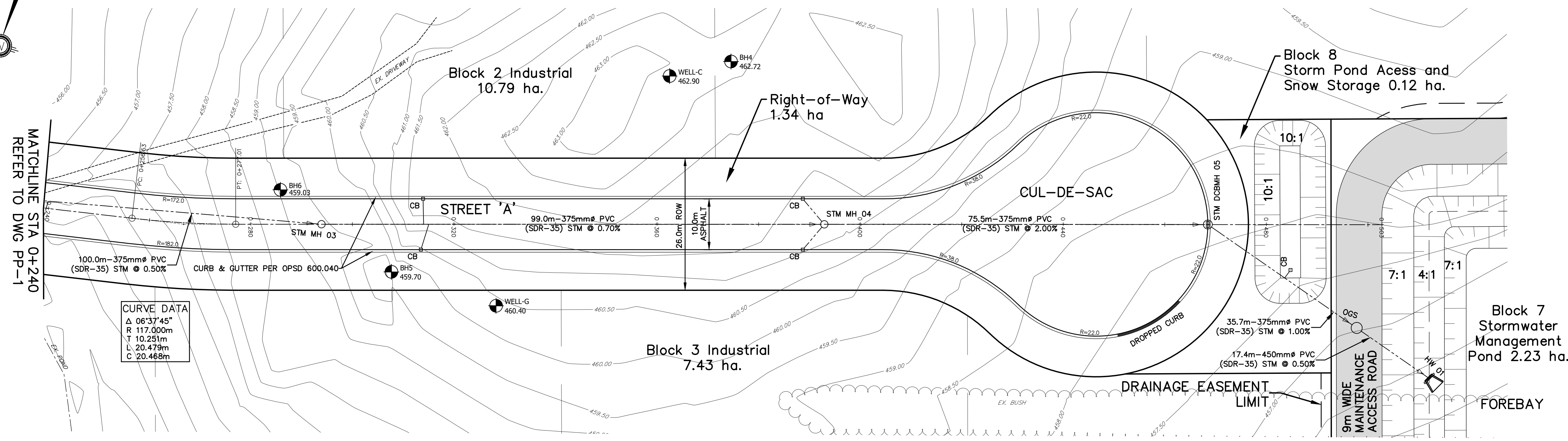
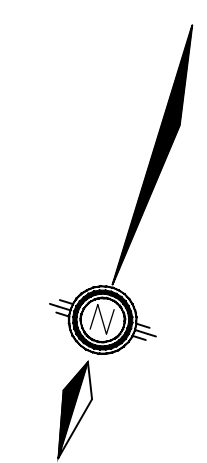


DELTINI COMMERCIAL DEVELOP. LTD
636040 PRINCE OF WALES ROAD
MULMUR PROPERTY

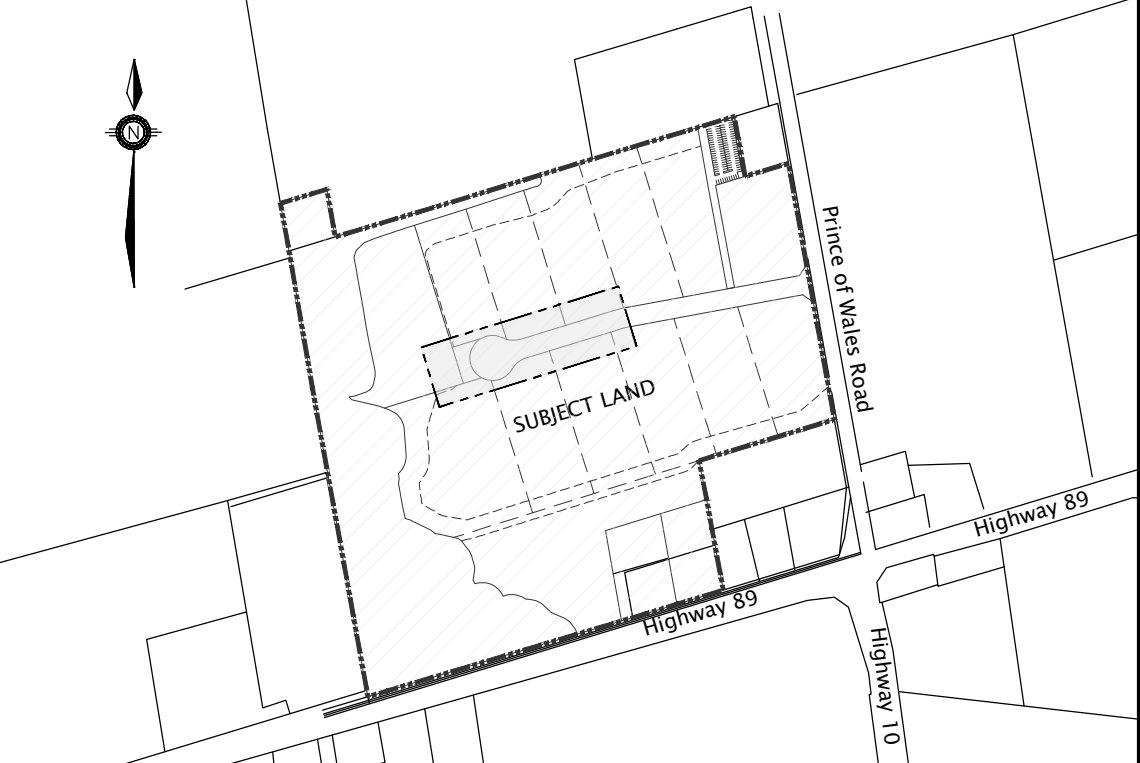
PLAN AND PROFILE
STREET A
STA 0+000 TO 0+240



| | | | | |
|---------|-------|--------------|---------|----------|
| DESIGN | VBS | SCALE: 1:500 | DATE | MAY 2021 |
| DRAWN | VBS | PROJECT | DWG. NO | |
| CHECKED | MF/DR | FRE-17110 | PP-1 | |



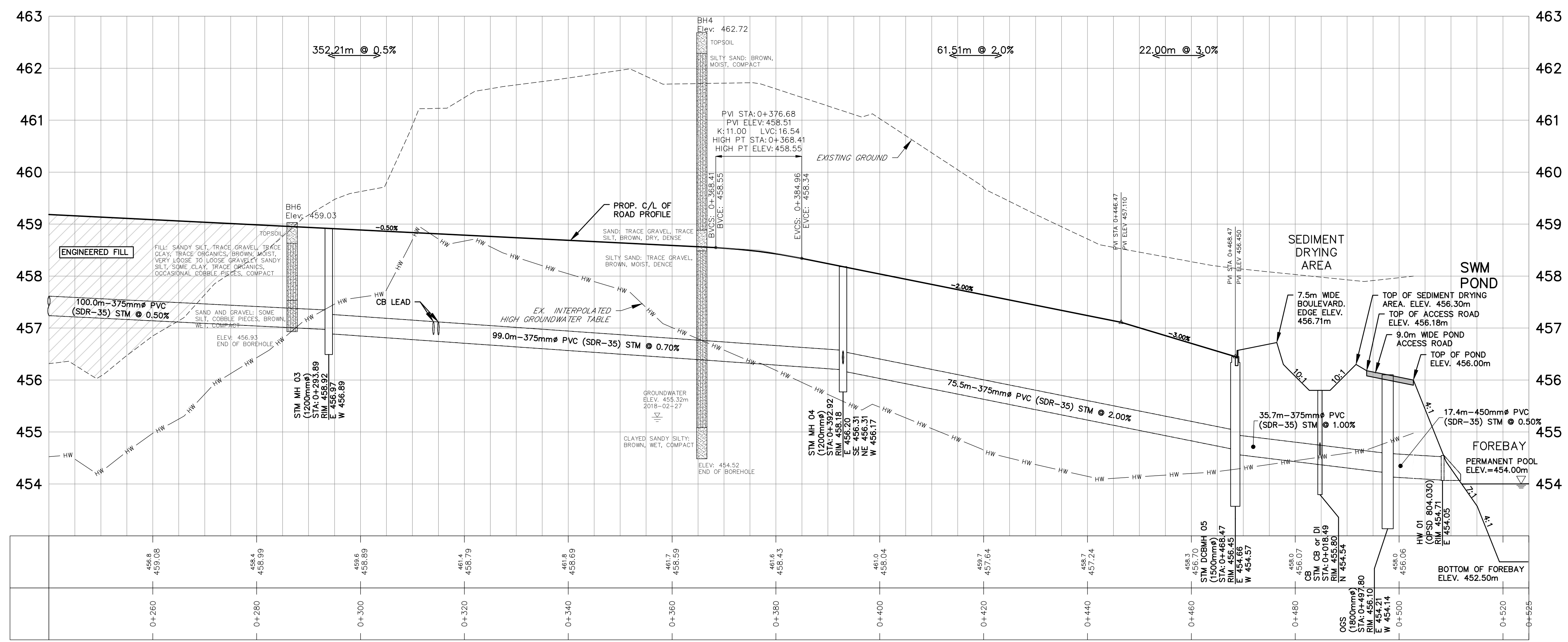
CURVE DATA
 Δ 06°37'45"
 R 117.000m
 T 10.251m
 L 20.479m
 C 20.468m



KEY PLAN
 NTS

LEGEND

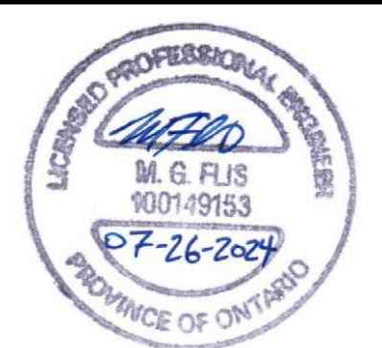
- LIMIT OF SUBDIVISION
- EX. CONTOUR AND ELEVATION
- EX. DITCH
- STORM MANHOLE
- CATCHBASIN
- DOUBLE CATCHBASIN
- PROP. STORM SEWER & FLOW DIRECTION
- PROP. STM DOUBLE CATCHBASIN
- BOREHOLE
- SLOPE (3:1 MAX.)
- ROAD LENGTH & GRADE
- ENGINEERED FILL
- WATER SUPPLY WELLS



G:\Eng_3D\VFRE-17110\Production\DWGS\FRE-17110-pp-STREET-A.dwg Layout:PP-2, Plotted Jul 24, 2024 @ 8:00pm by vsperrand, The Jones Consulting Group Ltd.

BENCHMARK:
 ELEVATIONS ARE GEODETIC AND ARE DERIVED BY REAL TIME OBSERVATIONS, USING THE CAN-NET NETWORK, UTM ZONE 17, NAD83 (CSRS)(2010).

| NO. | REVISIONS | DATE | INITIAL |
|-----|-------------------------------|----------|---------|
| 4. | 2nd SUBMISSION FOR DPA & ZBLA | JUL 2024 | MF |
| 3. | SUBMITTED FOR DPA & ZBLA | MAY 2021 | MF |
| 2. | PRELIMINARY FSR/SWMR | AUG 2020 | MF |
| 1. | CONCEPTUAL DESIGN | MAY 2020 | MF |



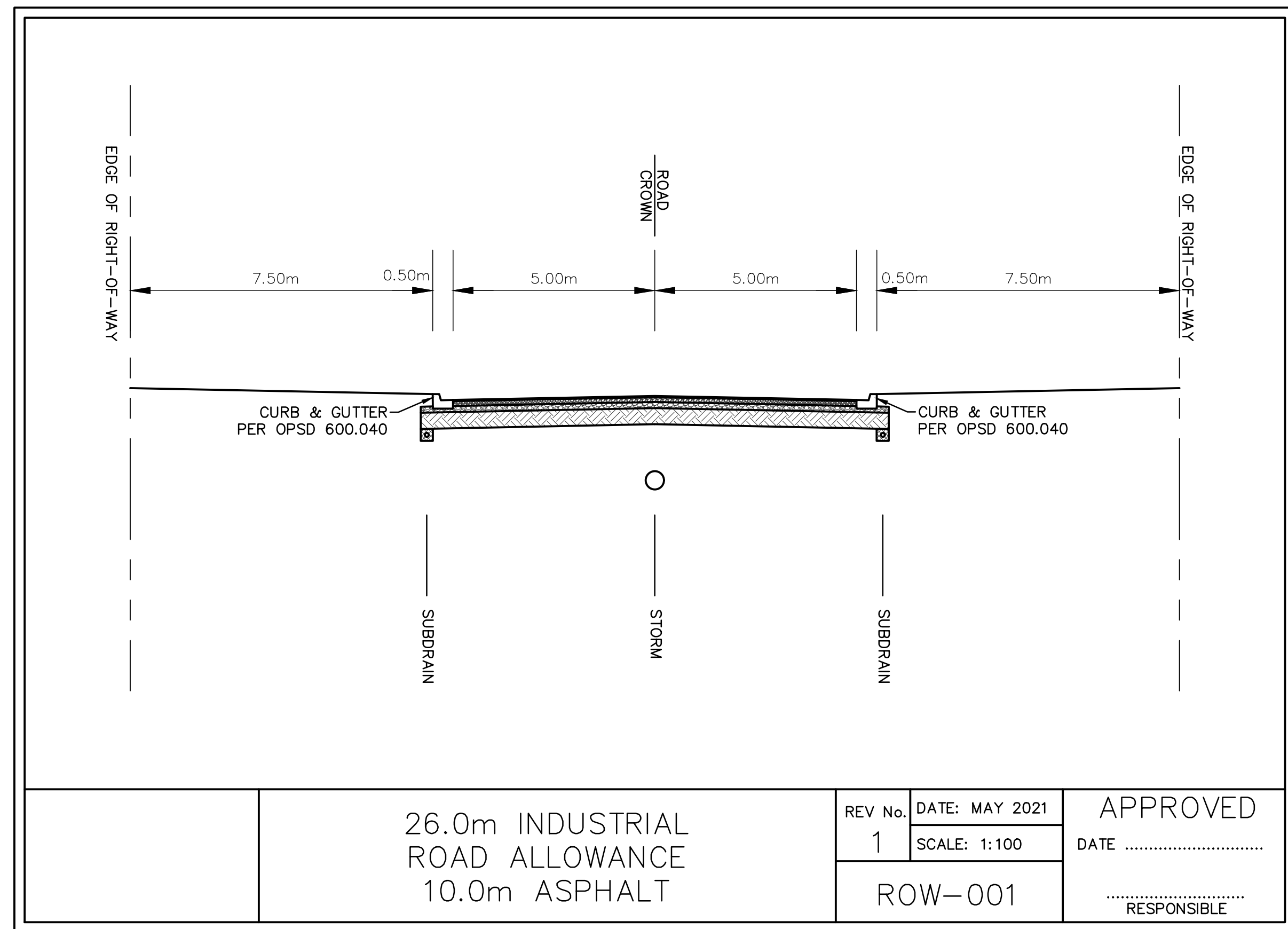
DELTINI COMMERCIAL DEVELOP. LTD
 636040 PRINCE OF WALES ROAD
 MULMUR PROPERTY

PLAN AND PROFILE
 STREET A
 STA 0+240 TO 0+525

JONES CONSULTING GROUP LTD.
 PLANNERS & ENGINEERS

229 Mapleview Dr. E. Unit 1
 Barrie, ON L4N 0W5
 P. 705.734.2538
 F. 705.734.1058

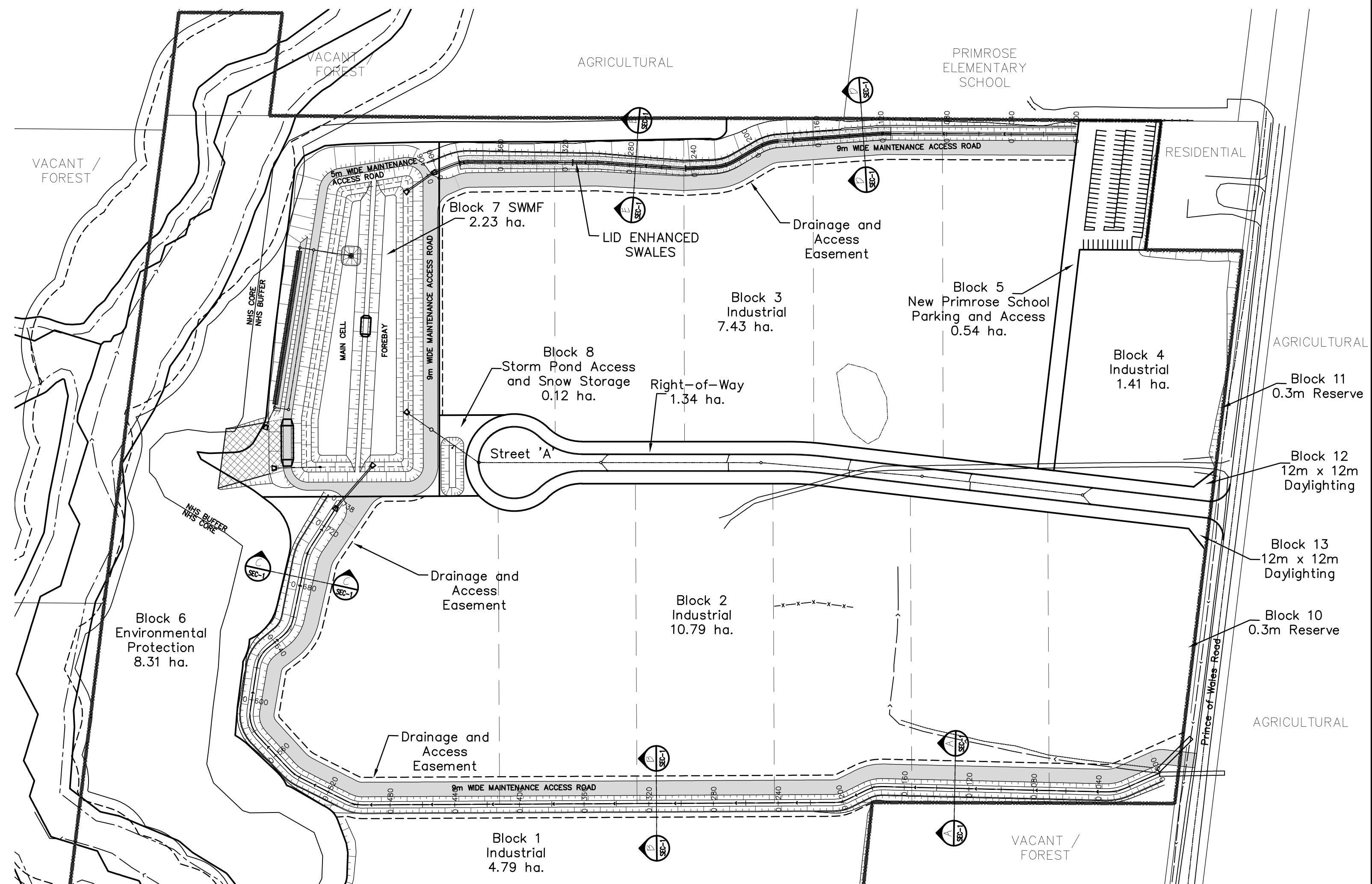
| | | | | |
|---------|-------|--------------|---------|----------|
| DESIGN | VBS | SCALE: 1:500 | DATE | MAY 2021 |
| DRAWN | VBS | PROJECT | DWG. NO | |
| CHECKED | MF/DR | FRE-17110 | PP-2 | |



26.0m INDUSTRIAL ROAD ALLOWANCE
10.0m ASPHALT

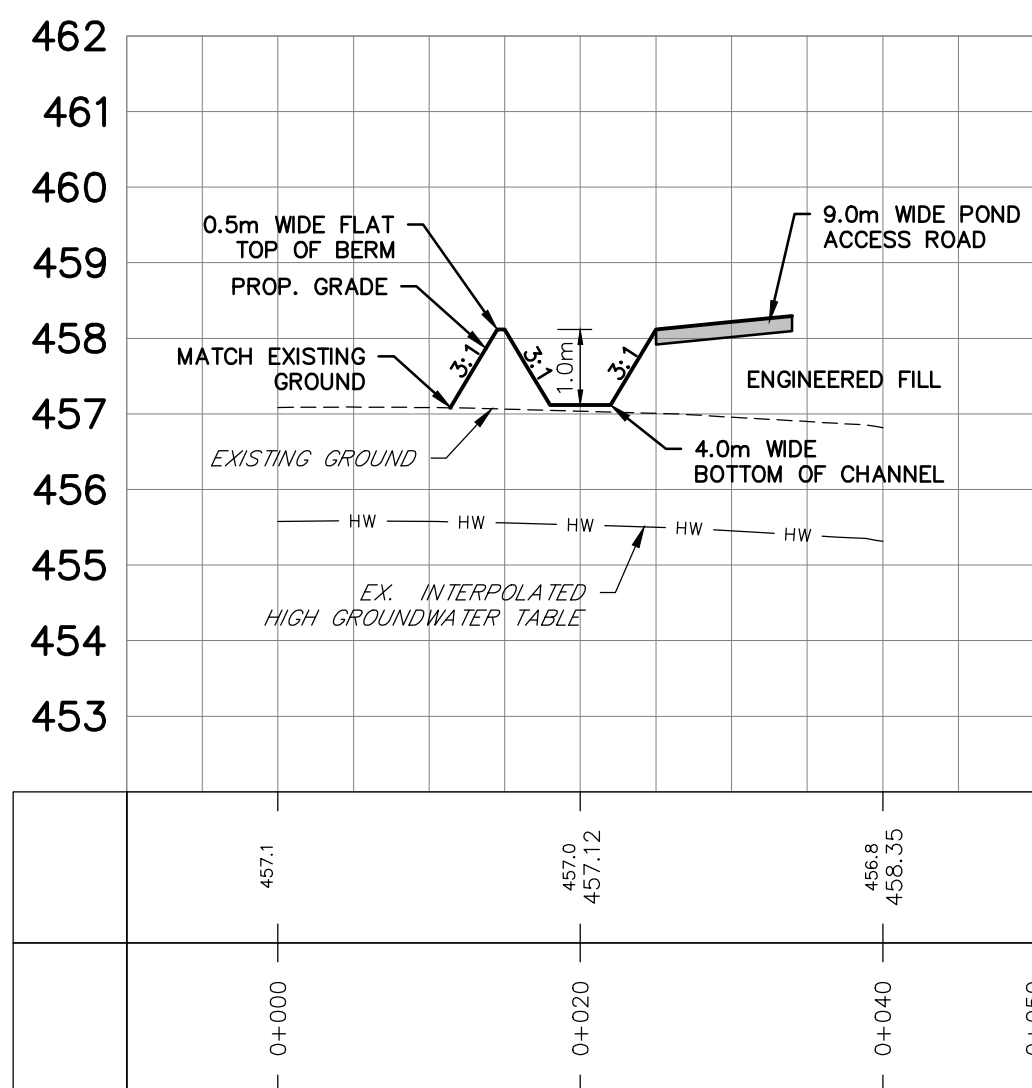
| | | |
|---------|----------------|-------------------|
| REV No. | DATE: MAY 2021 | APPROVED |
| 1 | SCALE: 1:100 | DATE |
| ROW-001 | | RESPONSIBLE |

INDUSTRIAL ROAD CROSS SECTION
AS NOTED

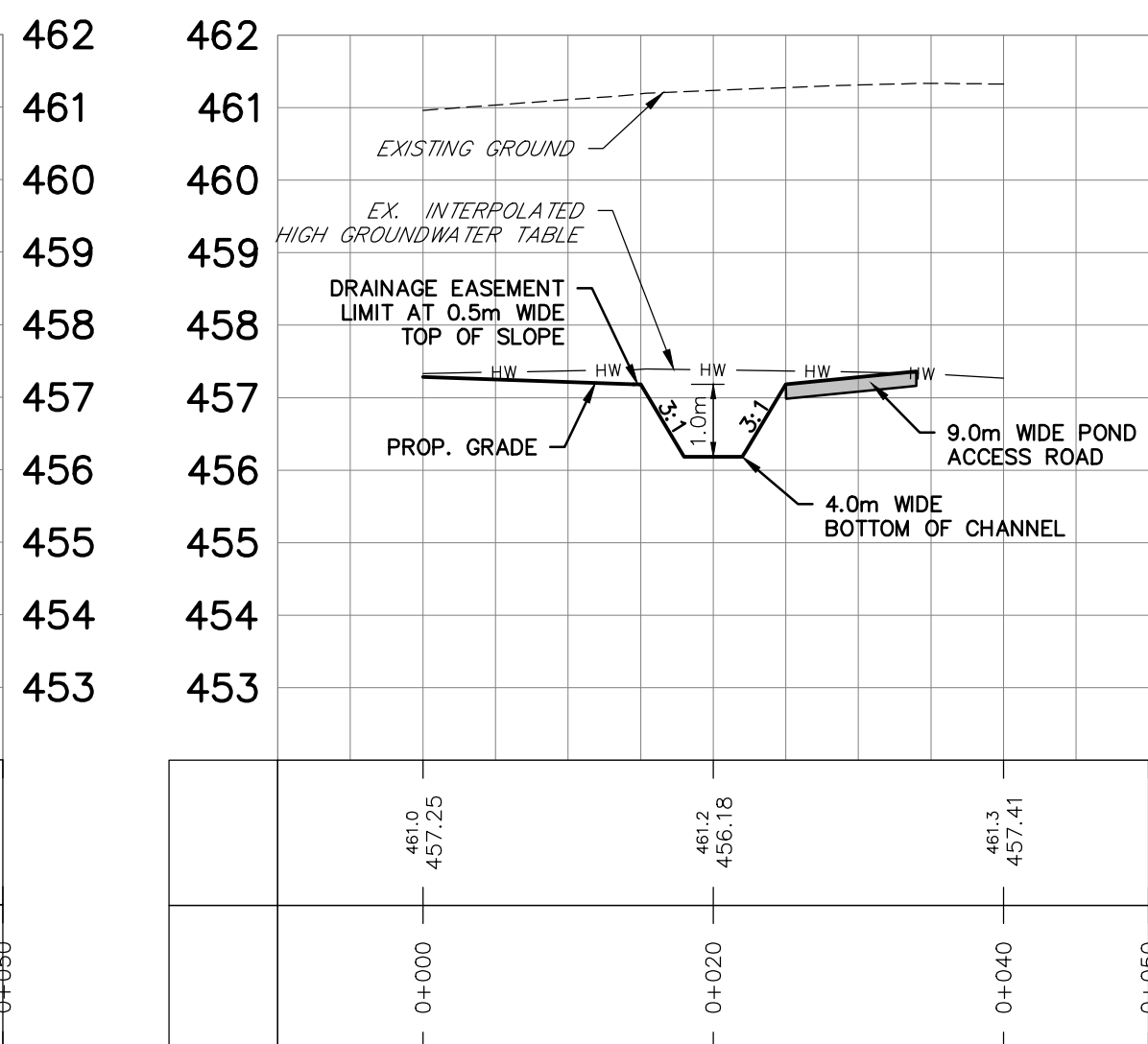


EASEMENT DRAINAGE CHANNEL SECTIONS
SCALE 1:2000

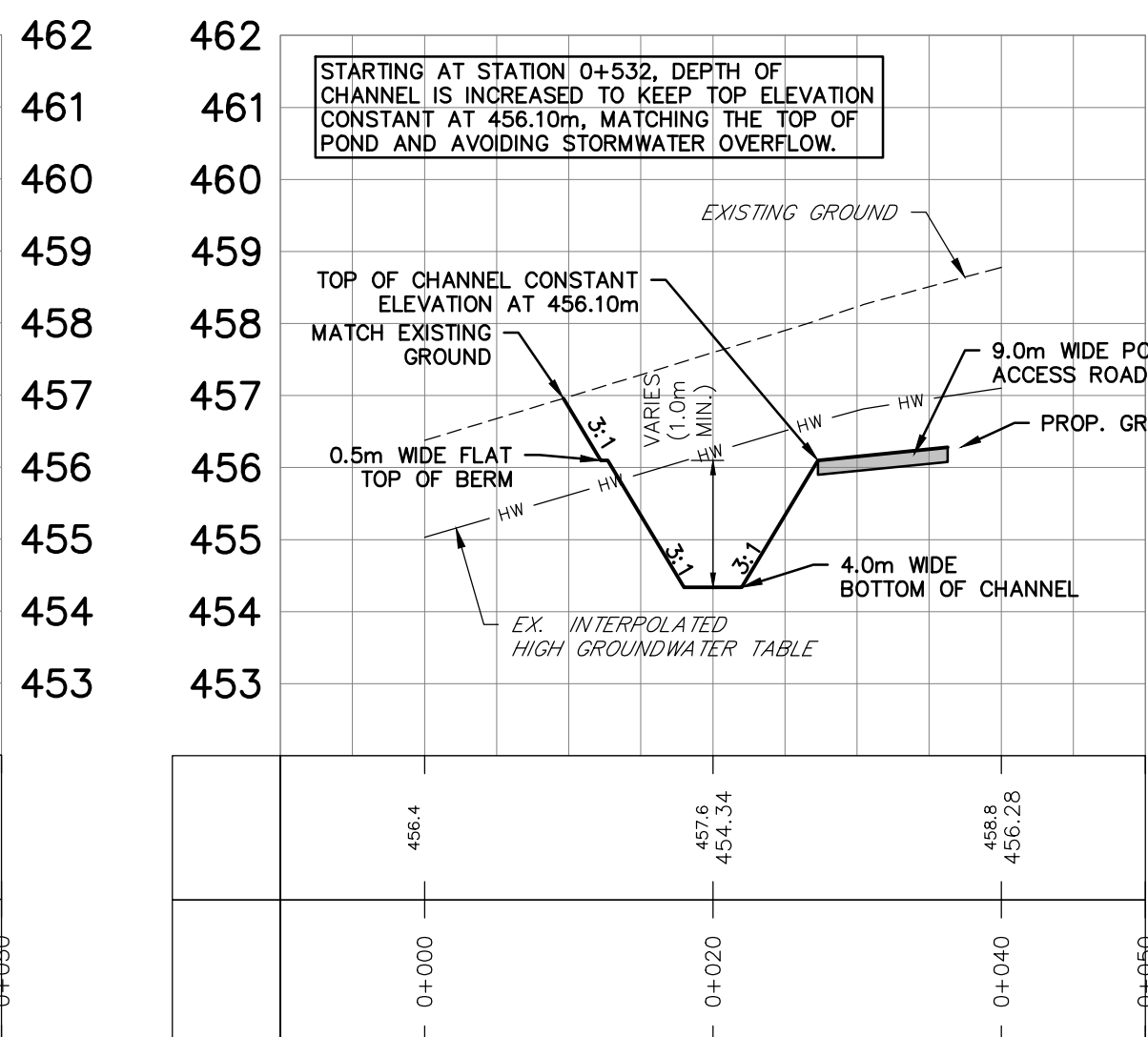
NOTE:
SOUTH DRAINAGE SWALE TO INCLUDE A GEOSYNTHETIC CLAY LINER. DETAILS INCLUDING LINER MATERIAL, DEPTH, SUBDRAINS, ETC. WILL BE PROVIDED AT THE DETAILED DESIGN STAGE.



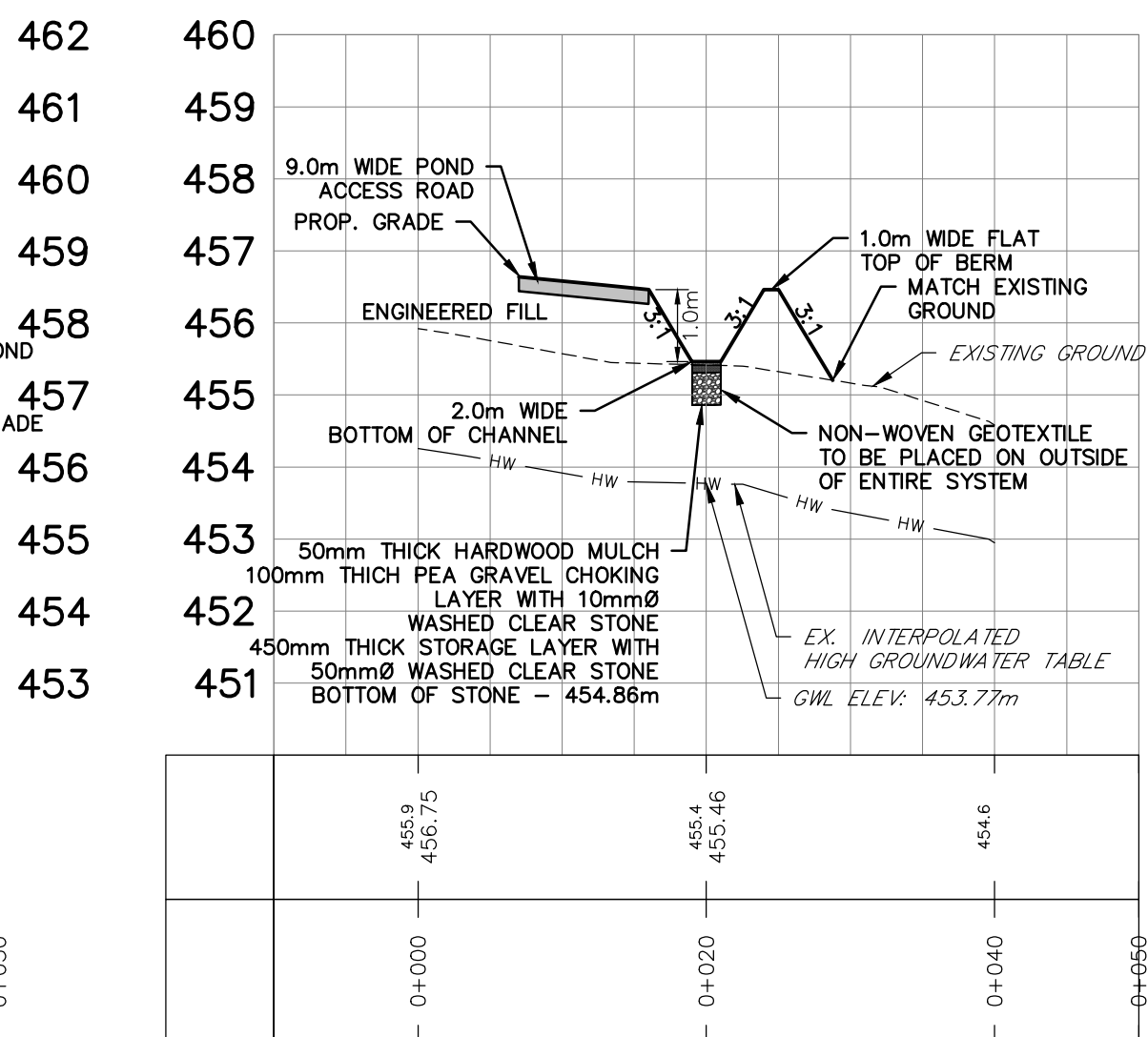
SECTION A-A
H 1:500 V 1:100



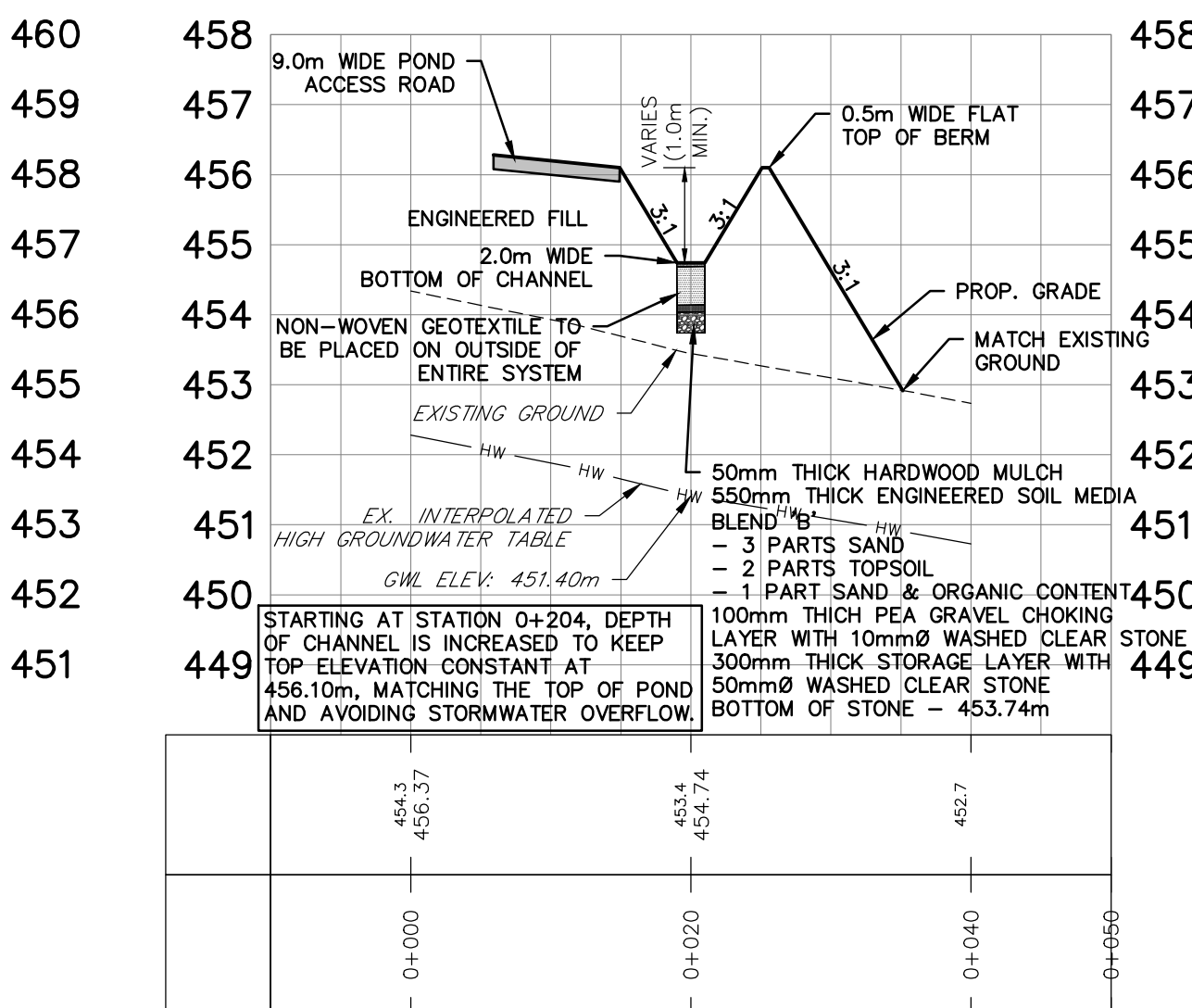
SECTION B-B
H 1:500 V 1:100



SECTION C-C
H 1:500 V 1:100



SECTION D-D
H 1:500 V 1:100



SECTION E-E
H 1:500 V 1:100

BENCHMARK:

ELEVATIONS ARE GEODETIC AND ARE DERIVED BY REAL TIME OBSERVATIONS, USING THE CAN-NET NETWORK, UTM ZONE 17, NAD83 (CSRS)(2010).

| NO. | REVISIONS | DATE | INITIAL |
|-----|-------------------------------|----------|---------|
| 4. | 2nd SUBMISSION FOR DPA & ZBLA | JUL 2024 | MF |
| 3. | SUBMITTED FOR DPA & ZBLA | MAY 2021 | MF |
| 2. | PRELIMINARY FSR/SWMR | AUG 2020 | MF |
| 1. | CONCEPTUAL DESIGN | MAY 2020 | MF |



DELTINI COMMERCIAL DEVELOP. LTD
636040 PRINCE OF WALES ROAD
MULMUR PROPERTY

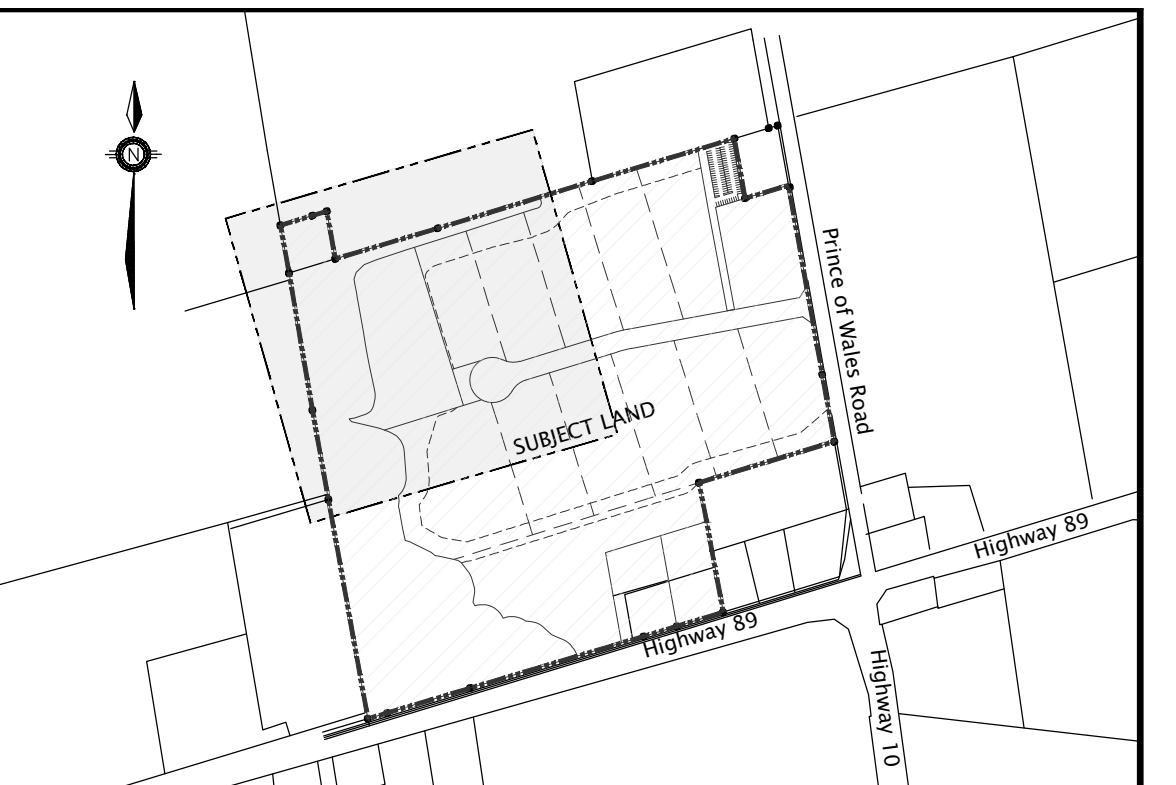
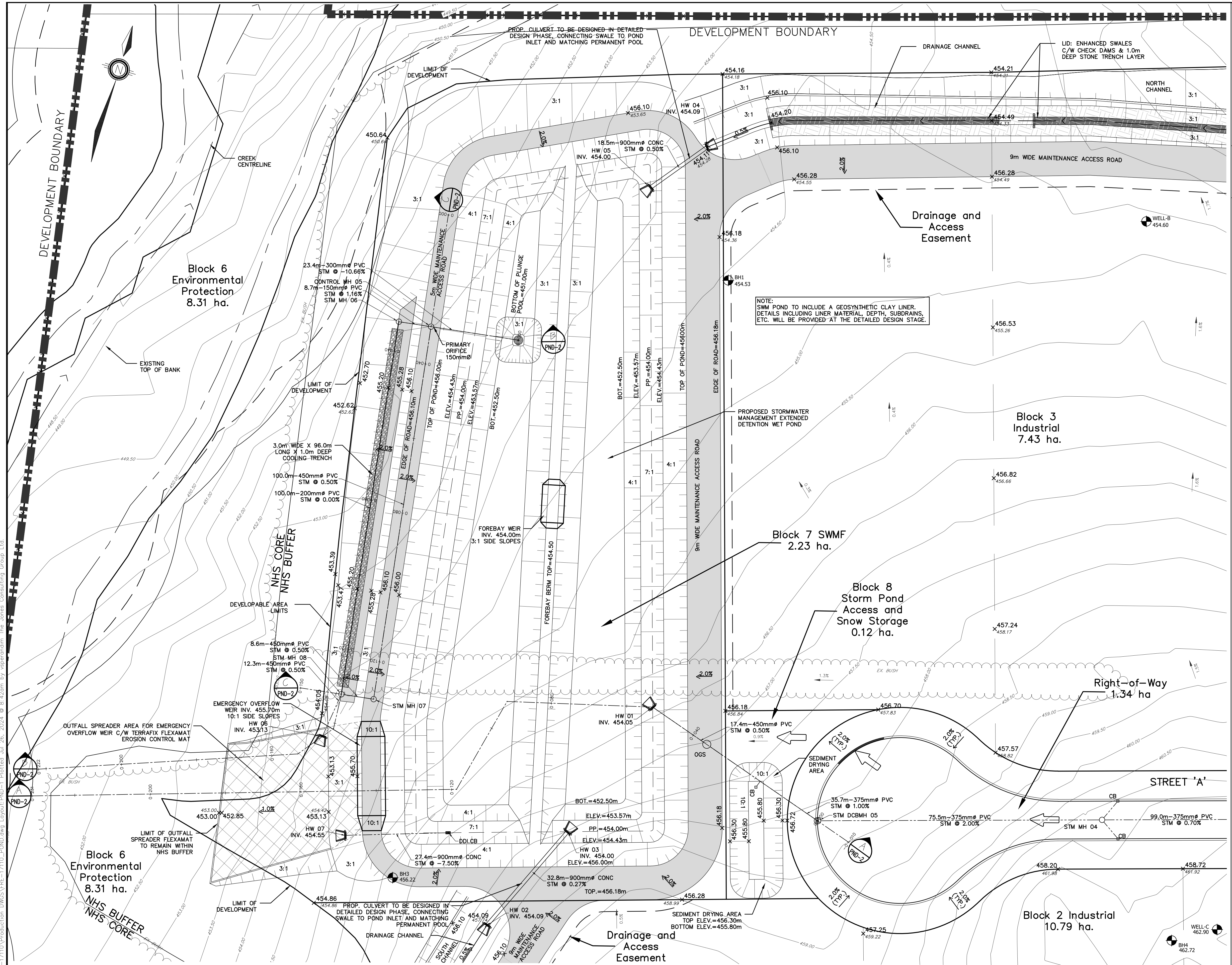
INDUSTRIAL ROAD CROSS SECTION
& DRAINAGE EASEMENT SECTIONS



229 Mapleview Dr. E. Unit 1
Barrie, ON L4N 0W5
P. 705.734.2538
F. 705.734.1056

| | | | |
|---------|-------|-----------------|---------------|
| DESIGN | VBS | SCALE: AS NOTED | DATE FEB 2023 |
| DRAWN | VBS | PROJECT | DWG. NO |
| CHECKED | MF/DR | FRE-17110 | SEC-1 |

G:\Eng_3D\FRE-17110\Production_DWG\FRE-17110-pp-STREET-A.dwg Layout:SEC-1 Plotted Jul 25, 2024 @ 12:36pm by asperandm The Jones Consulting Group Ltd.



KEY PLAN
NTS

LEGEND

| | |
|--|---|
| | LIMIT OF SUBDIVISION |
| | EX. CONTOUR AND ELEVATION |
| | EX. DITCH |
| | PROP. STM MH |
| | PROP. STM DOUBLE CATCHBASIN |
| | PROP. STM CATCHBASIN |
| | PROP. STM HEADWALL |
| | PROP. STM DOUBLE DITCH INLET |
| | BOREHOLE |
| | WATER SUPPLY WELLS |
| | MAJOR OVERLAND FLOW ROUTE |
| | GRADE CHANGE FLAG |
| | ROAD LENGTH & GRADE |
| | PROPOSED ELEVATION |
| | EXISTING ELEVATION |
| | DRAINAGE CHANNEL |
| | EX. DITCH |
| | WATERCOURSE |
| | MEANDER BELT WIDTH |
| | 6M BUFFER OF MEANDER BELT WIDTH |
| | REGIONAL FLOODLINE EXISTING CONDITIONS |
| | 6M BUFFER OF REGIONAL FLOODLINE EXISTING CONDITIONS |

\\\10.7.23\Public_Engs_30V\FRE-17110_POND.dwg, Layout: PND-1, Plotter: Jul 26, 2024 @ 8:42am by asperandm, The Jones Consulting Group Ltd.

BENCHMARK:
ELEVATIONS ARE GEODETIC AND ARE DERIVED BY REAL TIME OBSERVATIONS, USING THE CAN-NET NETWORK, UTM ZONE 17, NAD83 (CSRS)(2010).

| NO. | REVISIONS | DATE | INITIAL |
|-----|-------------------------------|----------|---------|
| 4. | 2nd SUBMISSION FOR DPA & ZBLA | JUL 2024 | MF |
| 3. | SUBMITTED FOR DPA & ZBLA | MAY 2021 | MF |
| 2. | PRELIMINARY FSR/SWMR | AUG 2020 | MF |
| 1. | CONCEPTUAL DESIGN | MAY 2020 | MF |

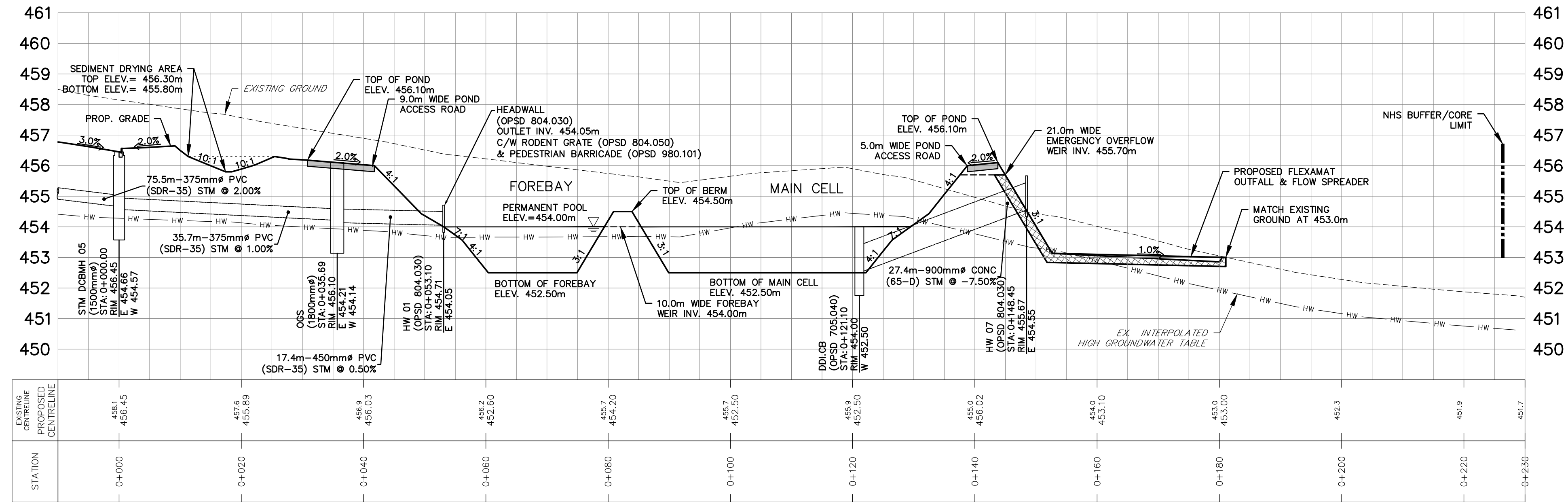
DELTINI COMMERCIAL DEVELOP. LTD
 636040 PRINCE OF WALES ROAD
 MULMUR PROPERTY

POND PLAN VIEW

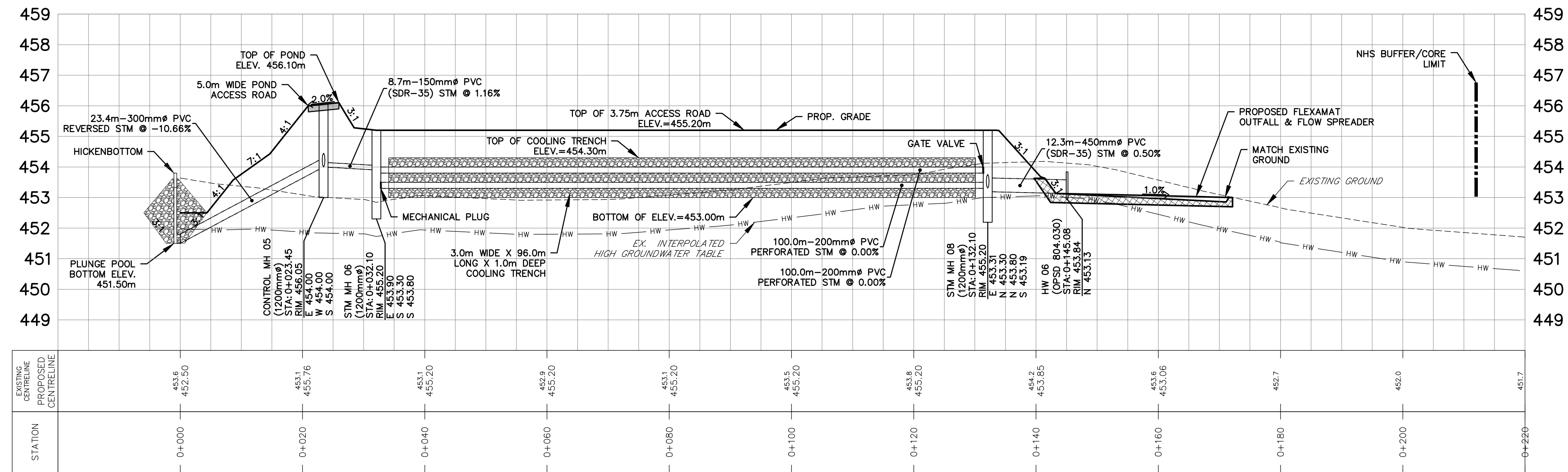
229 Mapleview Dr. E. Unit 1
 Barrie, ON L4N 0W5
 P. 705.734.2538
 F. 705.734.1056

| | | | | |
|---------|-------|--------------|---------|-----------|
| DESIGN | VBS | SCALE: 1:500 | DATE | JUNE 2023 |
| DRAWN | VBS | PROJECT | DWG. NO | |
| CHECKED | MF/DR | FRE-17110 | PND-1 | |

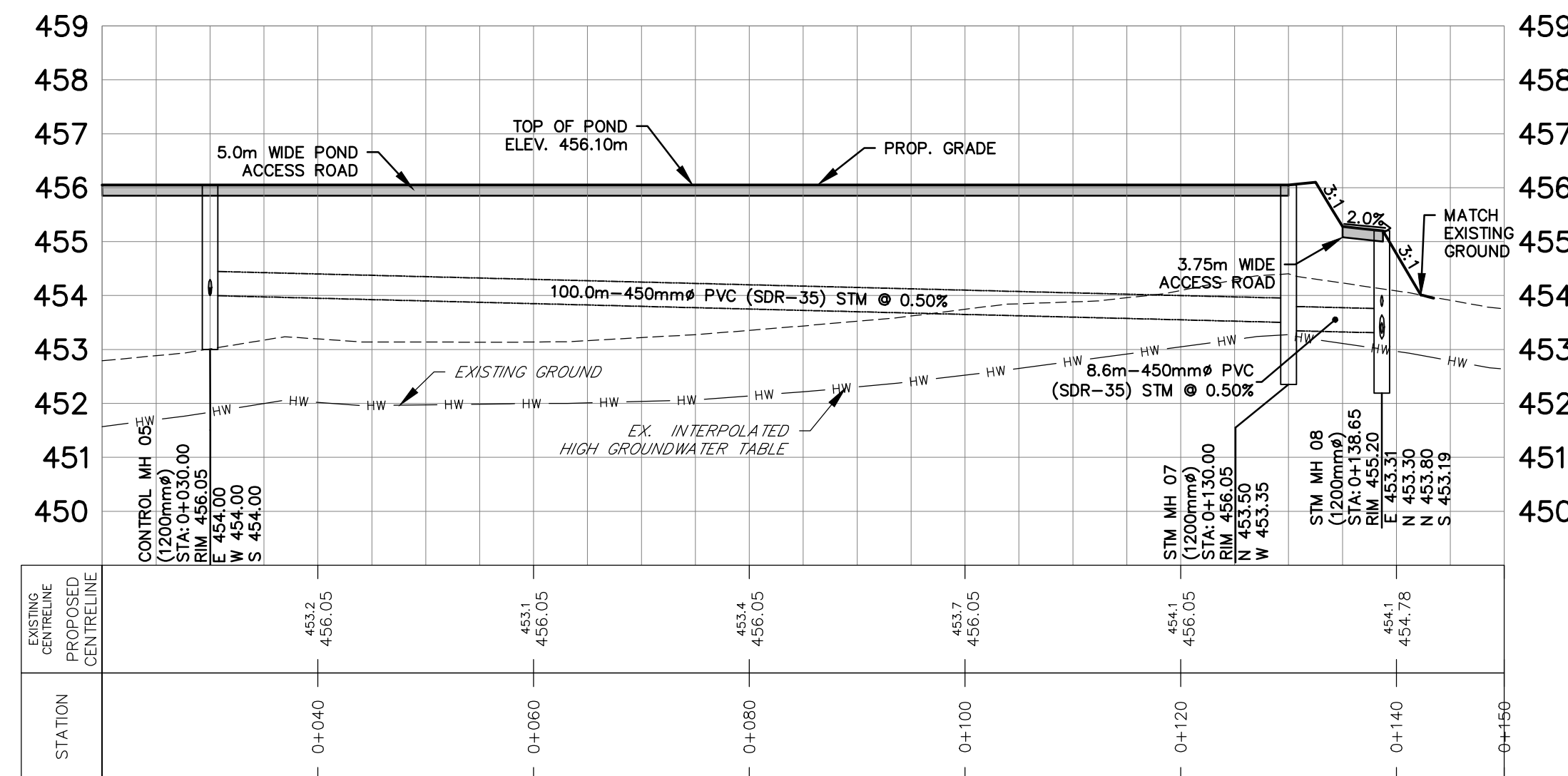
SECTION A-A
H 1:500 V 1:100



SECTION B-B
H 1:500 V 1:100



SECTION C-C
H 1:500 V 1:100



NOTE:
SWM POND TO INCLUDE A GEOSYNTHETIC CLAY LINER
DETAILS INCLUDING LINER MATERIAL, DEPTH, SUBDRAINS,
ETC. WILL BE PROVIDED AT THE DETAILED DESIGN STAGE.

BENCHMARK:
ELEVATIONS ARE GEODETIC AND ARE DERIVED BY
REAL TIME OBSERVATIONS, USING THE CAN-NET
NETWORK, UTM ZONE 17, NAD83 (CSRS)(2010).

| NO. | REVISIONS | DATE | INITIAL |
|-----|-------------------------------|----------|---------|
| 4. | 2nd SUBMISSION FOR DPA & ZBLA | JUL 2024 | MF |
| 3. | SUBMITTED FOR DPA & ZBLA | MAY 2021 | MF |
| 2. | PRELIMINARY FSR/SWMR | AUG 2020 | MF |
| 1. | CONCEPTUAL DESIGN | MAY 2020 | MF |



DELTINI COMMERCIAL DEVELOP. LTD
636040 PRINCE OF WALES ROAD
MULMUR PROPERTY



POND SECTIONS

| | | | |
|---------|-------|-----------------|-----------------|
| DESIGN | VBS | SCALE: AS NOTED | DATE: JUNE 2023 |
| DRAWN | VBS | PROJECT | DWG. NO |
| CHECKED | MF/DR | FRE-17110 | PND-2 |



KEY PLAN
NTS

LEGEND

- LIMIT OF SUBDIVISION
- DIRECTION OF OVERLAND FLOW
- EX. CONTOUR AND ELEVATION
- CATCHMENT AREA ID NUMBER
- CURVE NUMBER OR % IMPERVIOUS
- AREA (ha.)
- CATCHMENT AREA BOUNDARY
- WATERCOURSE
- MEANDER BELT WIDTH
- 6M BUFFER OF MEANDER BELT WIDTH
- REGIONAL FLOODLINE EXISTING CONDITIONS
- 6M BUFFER OF REGIONAL FLOODLINE EXISTING CONDITIONS

G:\Eng_3D\VFRE-17110\Production\DWG\FRE-17110-DEVELOPMENT PLAN.dwg Layout:SWM-1 Plotted Jul 24, 2024 @ 8:23pm by: asperandim The Jones Consulting Group Ltd.

BENCHMARK:
ELEVATIONS ARE GEODETIC AND ARE DERIVED BY REAL TIME OBSERVATIONS, USING THE CAN-NET NETWORK, UTM ZONE 17, NAD83 (CSRS)(2010).

| NO. | REVISIONS | DATE | INITIAL |
|-----|-------------------------------|----------|---------|
| 4. | 2nd SUBMISSION FOR DPA & ZBLA | JUL 2024 | MF |
| 3. | SUBMITTED FOR DPA & ZBLA | MAY 2021 | MF |
| 2. | PRELIMINARY FSR/SWMR | AUG 2020 | MF |
| 1. | CONCEPTUAL DESIGN | MAY 2020 | MF |



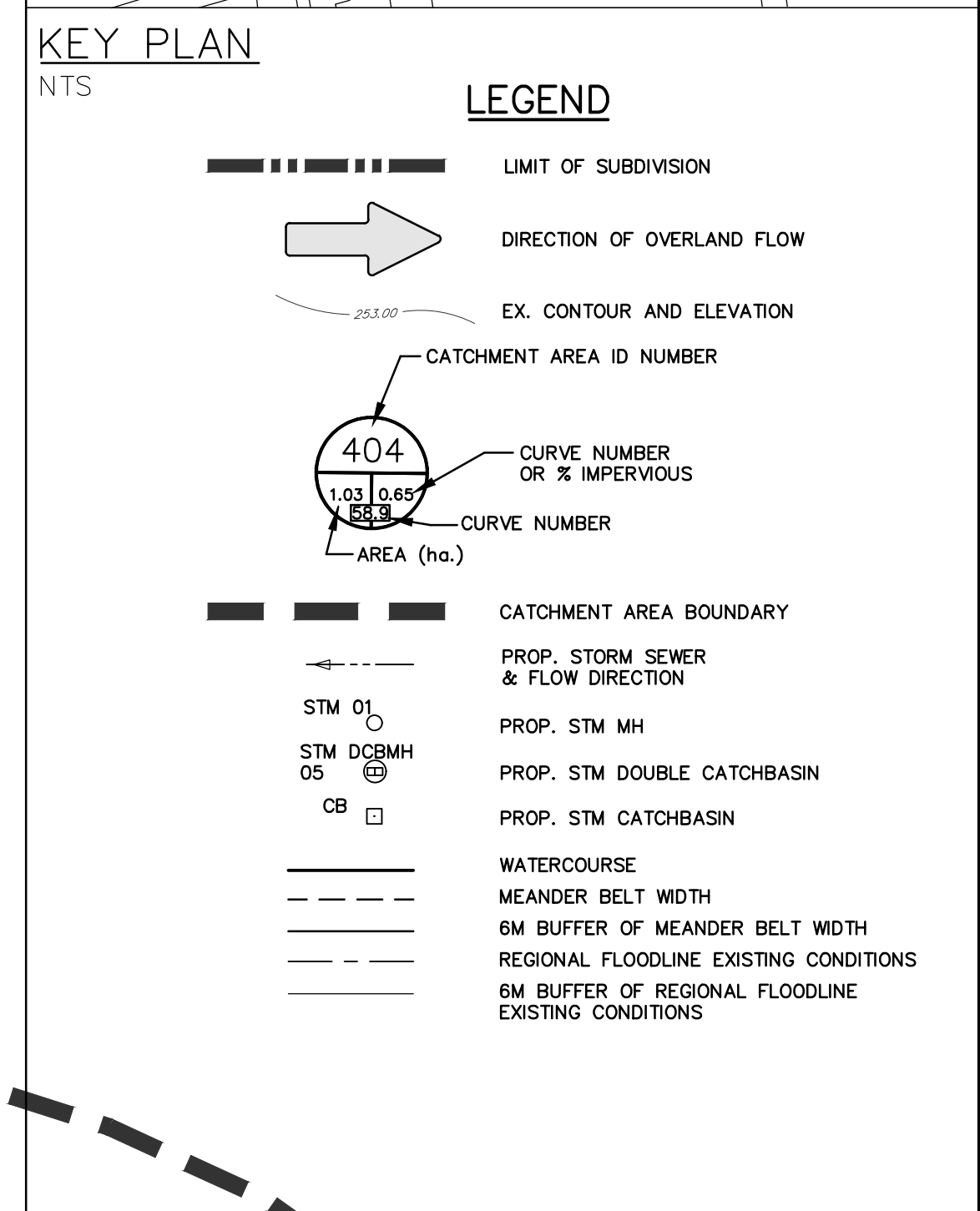
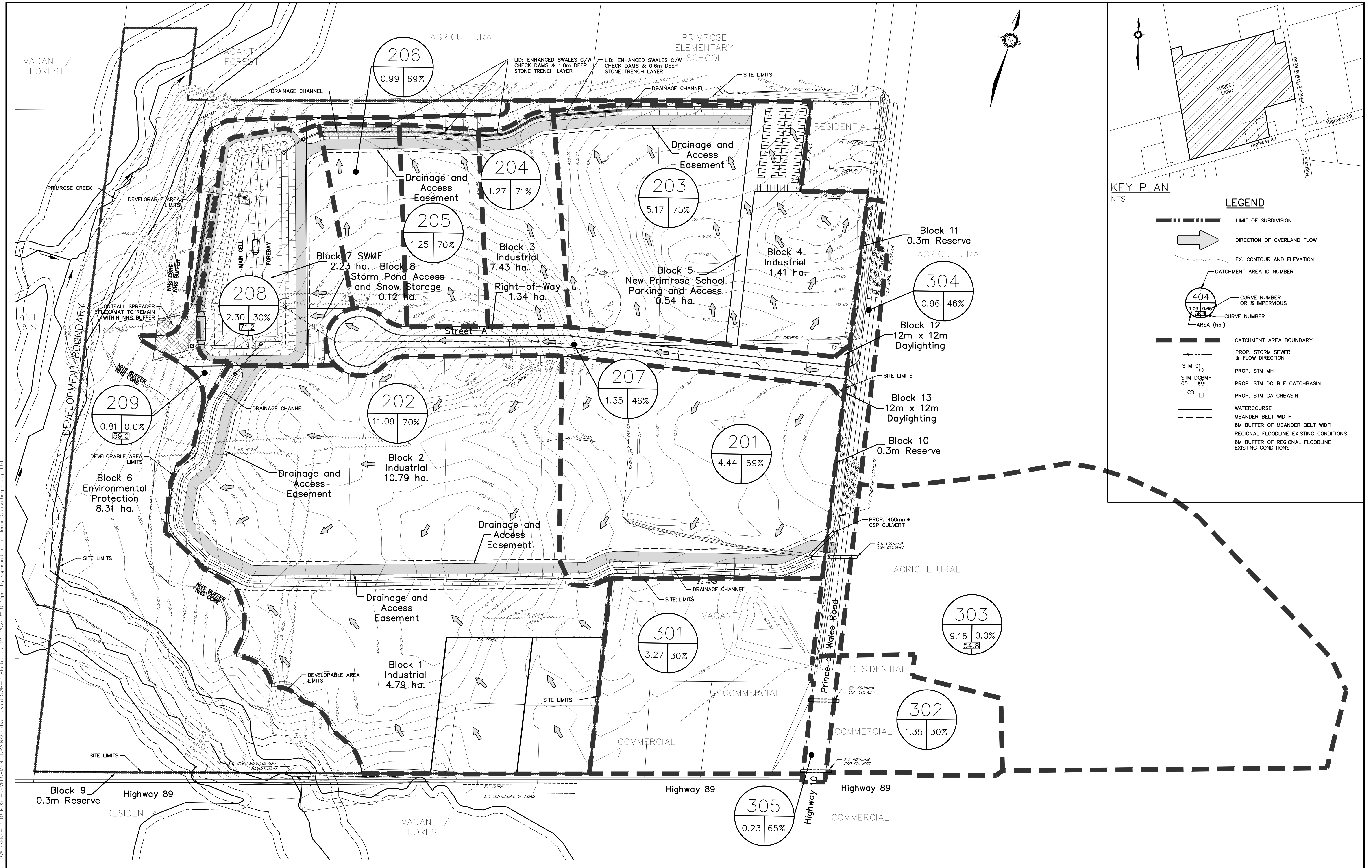
DELTINI COMMERCIAL DEVELOP. LTD
636040 PRINCE OF WALES ROAD
MULMUR PROPERTY

STORMWATER MANAGEMENT PLAN
PRE-DEVELOPMENT CONDITION

JONES CONSULTING GROUP LTD.
PLANNERS & ENGINEERS

229 Mapleview Dr. E. Unit 1
Barrie, ON L4N 0W5
P. 705.734.2538
F. 705.734.1056

| | | | | |
|---------|-------|---------------|---------|----------|
| DESIGN | VBS | SCALE: 1:1500 | DATE | MAY 2021 |
| DRAWN | VBS | PROJECT | DWG. NO | |
| CHECKED | MF/DR | FRE-17110 | SWM-1 | |



G:\Eng-3D\VFRE-17110\Production\DWG\FRE-17110-POST-DEVELOPMENT DRAINAGE.dwg, Layout:SWM-2, Plotted: Jul 24, 2024 @ 8:33pm by: vsperradm, The Jones Consulting Group Ltd.

BENCHMARK:
ELEVATIONS ARE GEODETIC AND ARE DERIVED BY REAL TIME OBSERVATIONS, USING THE CAN-NET NETWORK, UTM ZONE 17, NAD83 (CSRS)(2010).

| NO. | REVISIONS | DATE | INITIAL |
|-----|-------------------------------|----------|---------|
| 4. | 2nd SUBMISSION FOR DPA & ZBLA | JUL 2024 | MF |
| 3. | SUBMITTED FOR DPA & ZBLA | MAY 2021 | MF |
| 2. | PRELIMINARY FSR/SWMR | AUG 2020 | MF |
| 1. | CONCEPTUAL DESIGN | MAY 2020 | MF |



DELTINI COMMERCIAL DEVELOP. LTD
636040 PRINCE OF WALES ROAD
MULMUR PROPERTY

STORMWATER MANAGEMENT PLAN
POST-DEVELOPMENT CONDITION

JONES CONSULTING GROUP LTD.
PLANNERS & ENGINEERS

229 Mapleview Dr. E. Unit 1
Barrie, ON L4N 0W5
P. 705.734.2538
F. 705.734.1056

| | | | | |
|---------|-------|---------------|-----------|------------|
| DESIGN | VBS | SCALE: 1:1500 | DATE | MARCH 2020 |
| DRAWN | VBS | PROJECT | FRE-17110 | DWG. NO |
| CHECKED | MF/DR | | | SWM-2 |