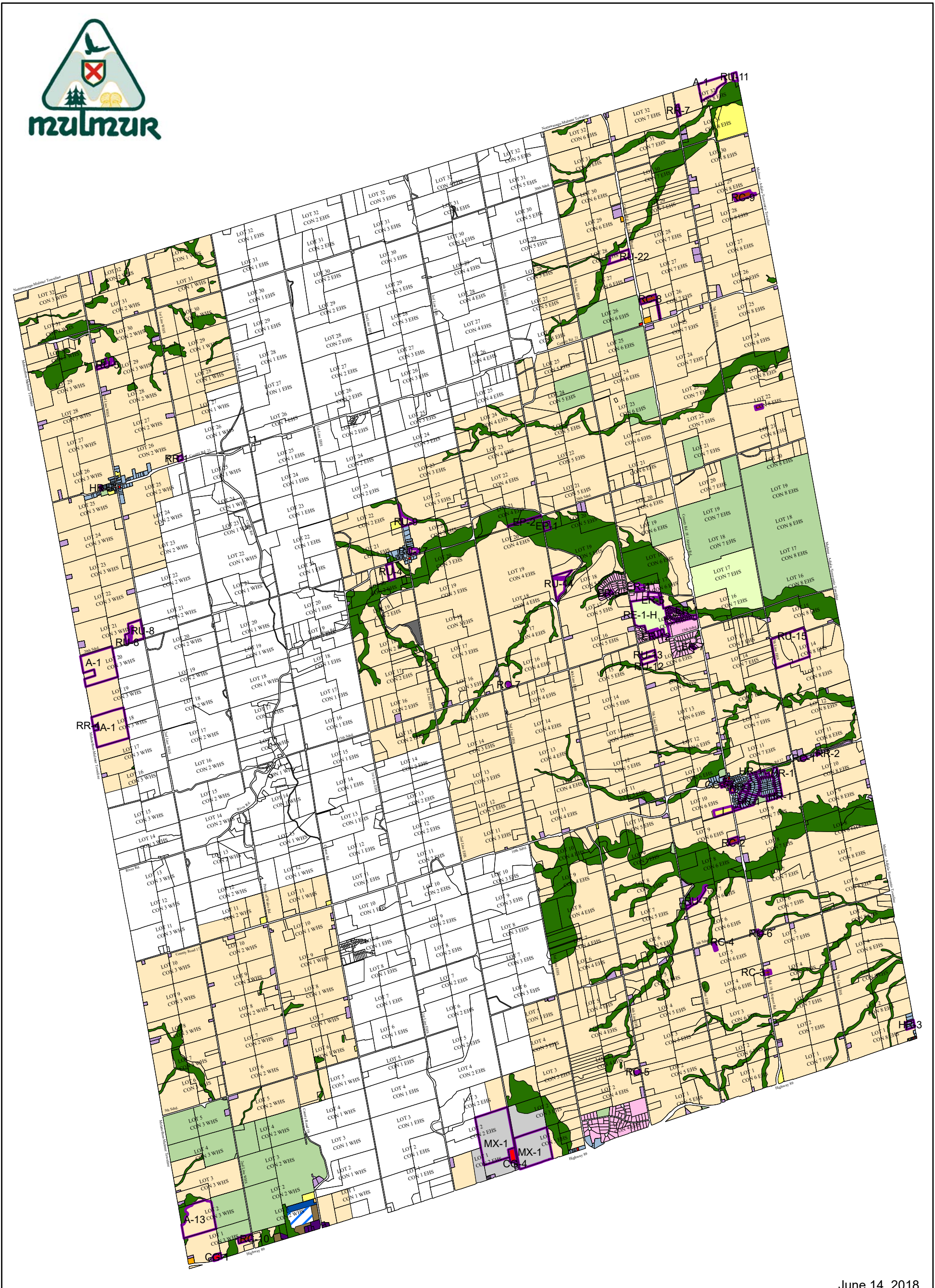


Township of Mulmur Zoning By-law Schedule A to BL 28-2018



June 14, 2018

- | | | | | | |
|--|----------------------------------|--|--------------------------|--|-------------------------------|
| | Countryside Area | | Countryside Area | | General Commercial |
| | Business Park Core Holding | | Environmental Protection | | Highway Commercial |
| | Business Park Gateway Holding | | Open Space | | Institutional |
| | Rural Commercial | | Recreational | | Extractive Industrial |
| | Business Park Transition Holding | | Hamlet Residential | | Waste Disposal Industrial |
| | Business Park Gateway | | Rural Residential | | Niagara Escarpment Commission |
| | Business Park Transition | | Estate Residential | | |



SOURCES:
 1. Lot and Concession Data has been provided by the Ministry of Natural Resources (MNR)
 © Her Majesty the Queen in Right of Ontario.
 2. Parcel Fabric has been supplied under license by Teranet Inc.
 3. Zoning data has been provided by the Township of Mulmur.

DISCLAIMER:
 The Township and the above mentioned sources are not responsible for any errors, omissions or inaccuracies in the data depicted on this map. It is the responsibility of the user of this map to verify the accuracy of the data depicted.

