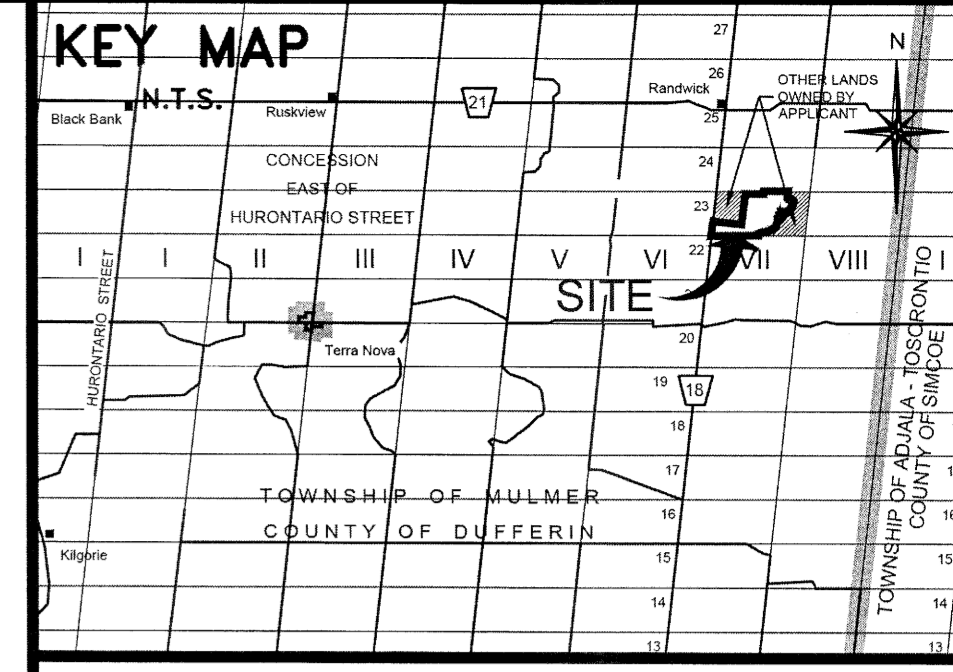
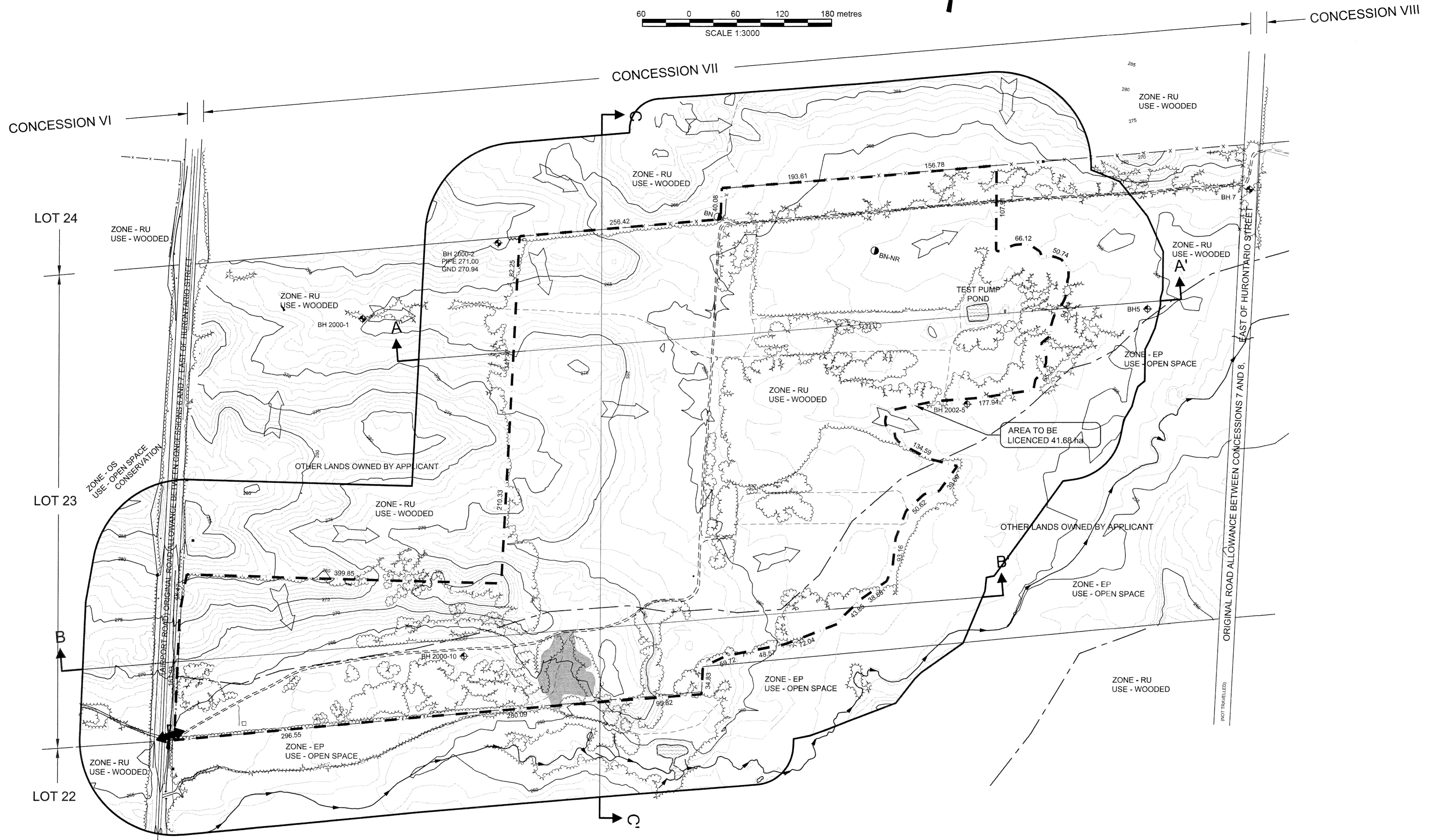
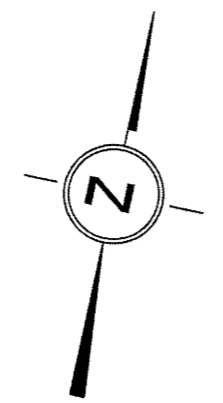
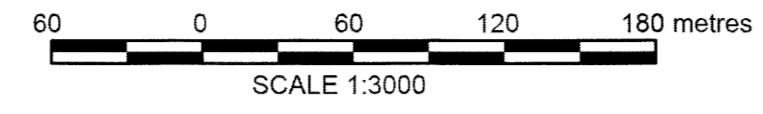


**DECLARATION OF PURPOSE**  
 THIS SITE PLAN IS PREPARED UNDER THE AGGREGATE RESOURCES ACT FOR A CLASS 'A' LICENCE, CATEGORY 1.

**PART OF LOT 23, CONCESSION 7  
 EAST OF HURONTARIO STREET  
 TOWNSHIP OF MULMUR  
 COUNTY OF DUFFERIN**



**LEGEND**

- LICENCED BOUNDARY
- LINE INDICATING ALL POINTS WITHIN 120m (MINIMUM) OF LICENCED BOUNDARY
- - - ZONE/DESIGNATION LINE
- PROPERTY LINE
- x - x - POST & RAIL FENCE (UNLESS OTHERWISE NOTED)
- PUBLIC ROAD
- INTERNAL ROAD
- TRAIL/PATH CENTERLINE
- WATER COURSE
- CONTOURS
- GENERAL DIRECTION OF DRAINAGE
- ↔ EXISTING ENTRANCE/EXIT
- GATE
- WOODED AREAS / PLANTATION
- POND
- ↔ SECTION ARROWS
- ▲ SW-7 STREAM FLOW MONITORING STATION
- OLD WAYSIDE PIT
- BN BUTTERNUT TREE
- BN-NR BUTTERNUT TREE NON-RETAINABLE
- ⊕ BH 2000-10 GROUNDWATER MONITORING WELL

**SCHEDULE OF AMENDMENTS**

NO.	DATE	DESCRIPTION	APPROVED
1.	July 2014	Amendments resulting from consultation process	ATG

ANNE TERRY GUIOT  
 IS APPROVED BY THE  
 MINISTRY OF NATURAL RESOURCES  
 PURSUANT TO SECTION 8 (4) OF THE  
 AGGREGATE RESOURCES ACT TO  
 PREPARE AND CERTIFY SITE PLANS.

*Anne Terry Guiot*  
 ANNE TERRY GUIOT DATE

**ARBOUR FARMS PIT  
 MULMUR TOWNSHIP**

LICENSEE: ARBOUR FARMS LTD. c/o ADAM KREHM  
 245 CARLAW AVENUE, SUITE 107  
 TORONTO, ONTARIO  
 M4M 2S6  
 (416) 466-2842

**EXISTING FEATURES**

PROJECT NO. 98 - 1483	DRWG. NO. 1483 - 1 OF 5
DATE: DECEMBER 2012	SCALE: 1:3000
DRAWN: CAP	CHECKED: EP
APPROVED: ATG	

**Skelton Brumwell & Associates Inc.**  
 ENGINEERING PLANNING ENVIRONMENTAL CONSULTANTS

93 BELL FARM ROAD, SUITE 107  
 BARRIE, ONTARIO L4M 5G1  
 www.skeltonbrumwell.ca

TELEPHONE: (705) 726-1141  
 FAX: (705) 726-0331  
 TOLL FREE (877) 726-1141

- A. General**
- The contour mapping was prepared by First Base Solutions using 2010 aerial photography. Contours are at a 1 metre interval. Elevations shown are related to NAD 83 Datum.
  - Survey information and lot alignment was provided by D. J. Cullen, OLS, 2012.
  - Information for Site Plan design was obtained from the following reports:
    - a) A Stage I-II Archaeological/Heritage Assessment of the proposed Arbour Farms Pit Addition in Part Lot 23, Concession 7, Mulmur Township, Dufferin County, Ontario, York North Archaeological Services, July 27, 1999.
    - b) A Stage I-II Archaeological/Heritage Assessment of the proposed Arbour Farms Pit Addition in Part Lot 23, Concession 7, Mulmur Township, Dufferin County, Ontario, York North Archaeological Services, August 28, 2000.
    - c) Updated Traffic Impact Study, Proposed Arbour Farms Gravel Pit, County of Dufferin, MMM Group, October 2012.
    - d) Geometric Analysis Study of Airport Rd (CR 18), Addendum Report, Arbour Farms Gravel Pit Application, County of Dufferin, MMM Group, October 2012.
    - e) Proposed Gravel Pit, Arbour Farms, Mulmur Township, Traffic Safety Impact Study, Intus Road Safety Engineering Incorporated, October 2012.
  - There are no buildings on or within 120m of the site.
- B. Drainage**
- Drainage of the site is both natural infiltration and surficial runoff following the contours as indicated by the arrows on the Site Plan.
  - The water table is determined to be at an elevation of between approximately 253 metres a.s.l. and 263 metres a.s.l.
- f) Sound Impact Analysis, Arbour Farms Pit, Proposed Gravel Pit, Valcoustics Canada Ltd., October 2012.**
- g) Hydrogeological and Aquatic Level 1 and 2 Technical Report, Arbour Farms Pit, Mulmur Twp, Golder Associates, October 2012.**
- h) Natural Environment Report, Class A Pit Below Water Application, Arbour Farms, Azimuth Environmental Consulting Inc., October 2012**
- i) Aggregate Reserve Study, Dalhousie Materials Engineering Ltd., May 2003.**
- j) Engineering Report - Rehabilitation Pond Freeboard Analysis (letter), Skelton Brumwell & Associates Inc., Sept. 18, 2013**
- k) Correspondence with various agencies during the application consultation period.**

Copyright © 2012 Skelton Brumwell & Associates Inc. All rights reserved. This document is protected by copyright laws and may not be reproduced in any manner, or for any purpose, except with the written permission of the copyright holder.